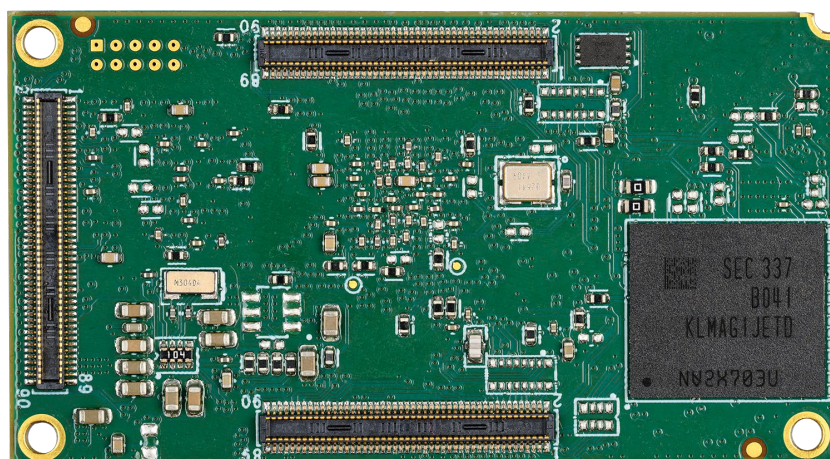
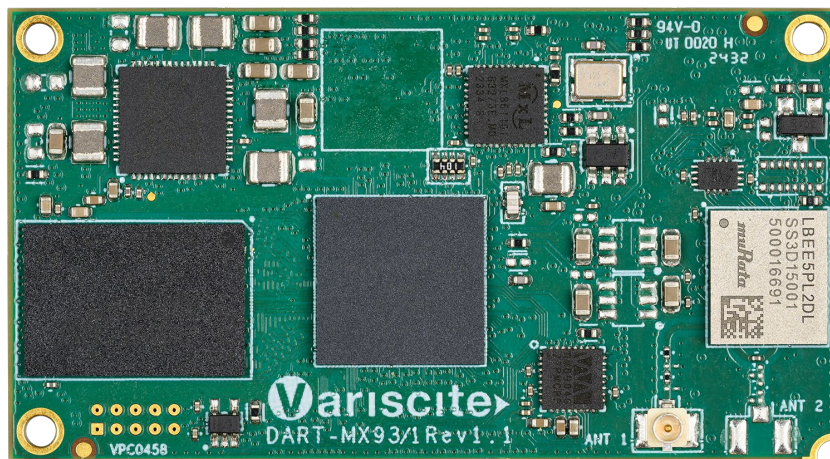




VARISCITE LTD.

DART-MX91 Datasheet

NXP i.MX 91™ - based System-on-Module



VARISCITE LTD.

DART-MX91 Datasheet

© 2023 Variscite Ltd.

All Rights Reserved. No part of this document may be photocopied, reproduced, stored in a retrieval system, or transmitted, in any form or by any means whether, electronic, mechanical, or otherwise without the prior written permission of Variscite Ltd.

No warranty of accuracy is given concerning the contents of the information contained in this publication. To the extent permitted by law no liability (including liability to any person by reason of negligence) will be accepted by Variscite Ltd., its subsidiaries, or employees for any direct or indirect loss or damage caused by omissions from or inaccuracies in this document.

Variscite Ltd. reserves the right to change details in this publication without notice. Product and company names herein may be the trademarks of their respective owners.

Variscite Ltd.
4, Hamelacha Street
Lod
P.O.B 1121
Airport City, 70100
ISRAEL

Tel: +972 (9) 9562910
Fax: +972 (9) 9589477

1. Document Revision History

| Revision | Date | Notes |
|----------|--------------|---|
| 1.0 | Feb 2, 2025 | Initial Release |
| 1.1 | Mar 15, 2025 | Processor Features updated to single core |
| 1.2 | Mar 26, 2025 | Fixed J1.9 connection in EC assembly |
| | | |
| | | |
| | | |
| | | |
| | | |
| | | |
| | | |
| | | |
| | | |
| | | |
| | | |
| | | |
| | | |
| | | |
| | | |

2. Table of Contents

| | | |
|-----------|---|-----------|
| 1. | Document Revision History | 3 |
| 2. | Table of Contents | 4 |
| 3. | List of Tables | 8 |
| 4. | Overview | 10 |
| 4.1 | <i>General Information</i> | 10 |
| 4.2 | <i>Feature Summary</i> | 11 |
| 4.3 | <i>Block Diagram</i> | 12 |
| 5. | Main Hardware Components | 13 |
| 5.1 | <i>NXP i.MX 91</i> | 13 |
| 5.1.1 | Overview | 13 |
| 5.1.2 | i.MX91 Block Diagram | 14 |
| 5.1.3 | Arm Cortex®-A55 MPCore cluster | 15 |
| 5.1.4 | On Chip Memory | 15 |
| 5.1.5 | External Memory | 15 |
| 5.1.6 | Graphics | 15 |
| 5.1.7 | Audio | 15 |
| 5.1.8 | Connectivity | 16 |
| 5.1.9 | Timers and PWMs | 16 |
| 5.1.10 | GPIO and Pin Multiplexing: | 16 |
| 5.1.11 | Analog: | 16 |
| 5.1.12 | Security: | 17 |
| 5.1.13 | System Debug | 17 |
| 5.1.14 | Power Management | 17 |
| 5.2 | <i>Memory</i> | 17 |
| 5.2.1 | RAM | 17 |
| 5.2.2 | Non-volatile Storage Memory | 17 |
| 5.3 | <i>Audio (WM8904)</i> | 18 |
| 5.4 | <i>Wi-Fi + BT + LR-WPAN</i> | 19 |
| 5.4.1 | DART-MX91 2.4GHz & 5GHz Wi-Fi® + Bluetooth® + 802.15.4 Option | 19 |
| 5.4.2 | DART-MX91 2.4GHz & 5GHz Wi-Fi® + Bluetooth® Option | 19 |
| 5.5 | <i>PMIC</i> | 20 |
| 5.6 | <i>10/100/1000 Mbps Ethernet Transceiver</i> | 20 |
| 5.7 | <i>EEPROM</i> | 20 |
| 6. | DART-MX91 Hardware Configuration | 21 |
| 7. | External Connectors | 22 |
| 7.1 | <i>Board to Board Connector</i> | 22 |
| 7.2 | <i>Wi-Fi & BT, 802.15.4 Connector</i> | 22 |
| 7.3 | <i>DART-MX91 Connector Pin-out</i> | 23 |
| 7.4 | <i>DART-MX91 Connector Pin Mux</i> | 33 |

| | | |
|-----------|---|-----------|
| 8. | SOM's Interfaces..... | 38 |
| 8.1 | <i>Trace Impedance</i> | 38 |
| 8.2 | <i>Display Interfaces</i> | 39 |
| 8.2.1 | LCDIF | 39 |
| 8.2.2 | ISI - Image Sensing Interface..... | 40 |
| 8.3 | <i>Ethernet Interface.....</i> | 43 |
| 8.3.1 | ENET_QOS (Ethernet Quality of Service) | 43 |
| 8.3.2 | ENET2..... | 46 |
| 8.4 | <i>Wi-Fi, BT, 802.15.4.....</i> | 47 |
| 8.4.1 | Interface Implementation Options | 47 |
| 8.4.2 | Bluetooth Interface Signals..... | 48 |
| 8.4.3 | Wakeup signals | 48 |
| 8.5 | <i>Ultra-Secured Digital Host Controller</i> | 49 |
| 8.5.1 | uSDHC1 Signals | 49 |
| 8.5.2 | uSDHC2 Signals | 49 |
| 8.5.3 | uSDHC3 Signals | 50 |
| 8.6 | <i>USB 2.0</i> | 51 |
| 8.6.1 | USB Port1 Interface Signals | 51 |
| 8.6.2 | USB Port2 Interface Signals | 52 |
| 8.7 | <i>Audio.....</i> | 53 |
| 8.7.1 | WM8904CGEFL Audio Codec..... | 54 |
| 8.7.2 | Serial Audio Interface | 55 |
| 8.7.3 | PDM - Microphone Interface (MICFIL)..... | 56 |
| 8.7.4 | MQS - Medium Quality Sound | 58 |
| 8.7.5 | SPDIF – Sony Philips Digital Interface Format..... | 58 |
| 8.8 | <i>LPUART.....</i> | 59 |
| 8.8.1 | LPUART1 Signals..... | 60 |
| 8.8.2 | LPUART2 Signals..... | 60 |
| 8.8.3 | LPUART3 Signals..... | 61 |
| 8.8.4 | LPUART4 Signals..... | 61 |
| 8.8.5 | LPUART5 Signals..... | 62 |
| 8.8.6 | LPUART6 Signals..... | 62 |
| 8.8.7 | LPUART7 Signals..... | 63 |
| 8.8.8 | LPUART8 Signals..... | 63 |
| 8.9 | <i>Flexible Controller Area Network.....</i> | 64 |
| 8.9.1 | FLEXCAN1 Signals..... | 64 |
| 8.9.2 | FLEXCAN2 Signals..... | 64 |
| 8.10 | <i>LPSPi - Low Power Serial Peripheral Interface</i> | 65 |
| 8.10.1 | LPSPi1 Signals..... | 65 |
| 8.10.2 | LPSPi2 Signals..... | 66 |
| 8.10.3 | LPSPi3 Signals..... | 66 |
| 8.10.4 | LPSPi4 Signals..... | 66 |
| 8.10.5 | LPSPi5 Signals..... | 66 |
| 8.10.6 | LPSPi6 Signals..... | 67 |
| 8.10.7 | LPSPi7 Signals..... | 67 |
| 8.10.8 | LPSPi8 Signals..... | 67 |
| 8.11 | <i>FlexSPi - Flexible Serial Peripheral Interface</i> | 68 |
| 8.11.1 | FlexSPi Signals | 68 |
| 8.12 | <i>TPM - Timer/PWM Module</i> | 69 |
| 8.12.1 | TPM1 Signals..... | 69 |

| | | |
|------------|--|-----------|
| 8.12.2 | TPM2 Signals..... | 70 |
| 8.12.3 | TPM3 Signals..... | 70 |
| 8.12.4 | TPM4 Signals..... | 70 |
| 8.12.5 | TPM5 Signals..... | 70 |
| 8.12.6 | TPM6 Signals..... | 71 |
| 8.13 | <i>LPI2C - Low Power Inter-Integrated Circuit.....</i> | <i>72</i> |
| 8.13.1 | LPI2C1 Signals | 72 |
| 8.13.2 | LPI2C2 Signals | 73 |
| 8.13.3 | LPI2C4 Signals | 73 |
| 8.13.4 | LPI2C5 Signals | 73 |
| 8.13.5 | LPI2C6 Signals | 73 |
| 8.13.6 | LPI2C7 Signals | 74 |
| 8.13.7 | LPI2C8 Signals | 74 |
| 8.14 | <i>I3C - Improved Inter-Integrated Circuit.....</i> | <i>75</i> |
| 8.14.1 | I3C1 Signals | 76 |
| 8.14.2 | I3C2 Signals | 76 |
| 8.15 | <i>GPIO - General-Purpose Input/Output.....</i> | <i>77</i> |
| 8.16 | <i>LPTMR - Low-Power Timer.....</i> | <i>81</i> |
| 8.16.1 | LPTMR1 Signals | 81 |
| 8.16.2 | LPTMR2 Signals | 81 |
| 8.17 | <i>Reference Clocks.....</i> | <i>82</i> |
| 8.17.1 | Clock Signals..... | 82 |
| 8.18 | <i>ADC.....</i> | <i>82</i> |
| 8.18.1 | ADC Signals | 82 |
| 8.19 | <i>DAP - Debug Access Port</i> | <i>83</i> |
| 8.19.1 | DAP Signals | 83 |
| 8.20 | <i>Power.....</i> | <i>84</i> |
| 8.20.1 | Power..... | 84 |
| 8.20.2 | Ground..... | 85 |
| 8.21 | <i>General System Control</i> | <i>86</i> |
| 8.21.1 | General System Control Signals | 86 |
| 8.21.2 | Boot configuration | 87 |
| 9. | Assembly Options | 88 |
| 9.1 | <i>Ethernet PHY.....</i> | <i>88</i> |
| 9.2 | <i>Analog Audio Codec.....</i> | <i>88</i> |
| 9.3 | <i>Single/Dual band Wi-Fi and BT/BLE combo.....</i> | <i>88</i> |
| 9.4 | <i>LPDDR4.....</i> | <i>88</i> |
| 9.5 | <i>eMMC.....</i> | <i>88</i> |
| 10. | Electrical Specifications..... | 89 |
| 10.1 | <i>Absolute Maximum Ratings.....</i> | <i>89</i> |
| 10.2 | <i>Operating Conditions.....</i> | <i>89</i> |
| 10.3 | <i>Peripheral Voltage Levels</i> | <i>89</i> |
| 10.4 | <i>Power Consumption.....</i> | <i>90</i> |
| 11. | Environmental Specifications | 91 |

12. Mechanical 92

12.1 *Carrier Board Mounting*..... 92

12.2 *Standoffs*..... 92

12.3 *SOM Dimensions*..... 93

13. Legal Notice 94

14. Warranty Terms..... 95

15. Contact Information 96

3. List of Tables

| | |
|---|----|
| <i>Table 1: Hardware Configuration Options</i> | 21 |
| <i>Table 2: DART-MX91 Pinout</i> | 23 |
| <i>Table 3: DART-MX91 PINMUX</i> | 33 |
| <i>Table 4: SOM Signal Group Traces Impedance</i> | 38 |
| <i>Table 5: LCDIF Signals</i> | 39 |
| <i>Table 6: ISI Signals</i> | 42 |
| <i>Table 7: Gigabit Ethernet Magnetics</i> | 43 |
| <i>Table 8: Ethernet PHY Signals</i> | 44 |
| <i>Table 9: MxL86110x Ethernet PHY LED Behavior</i> | 44 |
| <i>Table 10: ENET_QOS RMII/RGMII Signals</i> | 45 |
| <i>Table 11: ENET2 RMII/RGMII Signals</i> | 46 |
| <i>Table 12: BT UART Interface Signals</i> | 48 |
| <i>Table 13: Wakeup Signals</i> | 48 |
| <i>Table 14: uSDHC2 Signals</i> | 49 |
| <i>Table 15: uSDHC3 Signals</i> | 50 |
| <i>Table 16: USB 3.0/2.0 Port 1 Interface signals</i> | 51 |
| <i>Table 17: USB 2.0 Port 2 Interface signals</i> | 52 |
| <i>Table 18: Analog audio Signals</i> | 54 |
| <i>Table 19: Serial Audio Interface Signals</i> | 55 |
| <i>Table 20: PDM Interface Signals</i> | 57 |
| <i>Table 21: MQS Interface Signals</i> | 58 |
| <i>Table 22: SPDIF Interface Signals</i> | 58 |
| <i>Table 23: LPUART I/O Direction</i> | 60 |
| <i>Table 24: LPUART1 Signals</i> | 60 |
| <i>Table 25: LPUART2 Signals</i> | 60 |
| <i>Table 26: LPUART3 Signals</i> | 61 |
| <i>Table 27: LPUART4 Signals</i> | 61 |
| <i>Table 28: LPUART5 Signals</i> | 62 |
| <i>Table 29: LPUART6 Signals</i> | 62 |
| <i>Table 30: LPUART7 Signals</i> | 63 |
| <i>Table 31: LPUART8 Signals</i> | 63 |
| <i>Table 32: FLEXCAN1 Signals</i> | 64 |
| <i>Table 33: FLEXCAN2 Signals</i> | 64 |
| <i>Table 34: LPSPI1 Signals</i> | 65 |
| <i>Table 35: LPSPI2 Signals</i> | 66 |
| <i>Table 36: LPSPI3 Signals</i> | 66 |
| <i>Table 37: LPSPI4 Signals</i> | 66 |
| <i>Table 38: LPSPI5 Signals</i> | 66 |
| <i>Table 39: LPSPI6 Signals</i> | 67 |
| <i>Table 40: LPSPI7 Signals</i> | 67 |
| <i>Table 41: LPSPI8 Signals</i> | 67 |
| <i>Table 42: FlexSPI Signals</i> | 68 |
| <i>Table 43: TPM1 Signals</i> | 69 |
| <i>Table 44: TPM2 Signals</i> | 70 |
| <i>Table 45: TPM3 Signals</i> | 70 |
| <i>Table 46: TPM4 Signals</i> | 70 |
| <i>Table 47: TPM5 Signals</i> | 70 |
| <i>Table 48: TPM6 Signals</i> | 71 |
| <i>Table 49: LPI2C1 Signals</i> | 72 |

Table 50: LPI2C2 Signals 73

Table 51: LPI2C4 Signals 73

Table 52: LPI2C5 Signals 73

Table 53: LPI2C6 Signals 73

Table 54: LPI2C7 Signals 74

Table 55: LPI2C8 Signals 74

Table 56: I3C1 Signals 76

Table 57: I3C2 Signals 76

Table 58: GPIO Signals 78

Table 59: LPTMR1 Signals 81

Table 60: LPTMR2 Signals 81

Table 61: Clock Signals 82

Table 62: ADC Signals 82

Table 63: DAP Signals 83

Table 64: Power 84

Table 65: Digital Ground Pins 85

Table 66: General System Control Signals 86

Table 67: BOOT_MODE Signals 87

Table 68: Available boot modes 87

Table 69: Absolute Maximum Ratings 89

Table 70: Operating Ranges 89

Table 71: DART-MX91 Power Consumption 90

Table 72: Environmental Specifications 91

4. Overview

4.1 General Information

DART-MX91 offers high-performance processing for a low-power System-on-Module. The product is based on the i.MX 91 family, which represents NXP's latest power-optimized processors for smart home, building control, contactless HMI, IoT edge, and Industrial applications.

The i.MX 91 applications processor features an Arm® Cortex®-A55 running at up to 1.4 GHz and support for modern LPDDR4 memory to enable platform longevity and reliability; dual Gigabit Ethernet for gateway or multi-network segment support; dual USB ports; and the essential I/O for products in smart factory, smart home, smart office, medical device, metering, and cost-optimized system-on-module platforms.

The DART-MX91 provides an ideal building block for simple integration with a wide range of products in target markets requiring high-performance processing with low power consumption, compact size, and a cost-effective solution.

Supporting products:

- DT8M Custom Board – evaluation board
 - ✓ Carrier Board, compatible with DART-MX91
 - ✓ Schematics
- VAR-DVK-DT91 full development kit, including:
 - ✓ DT8M Custom Board
 - ✓ DART-MX91
 - ✓ Display and touch
 - ✓ Accessories and cables
- O.S support
 - ✓ Linux BSP

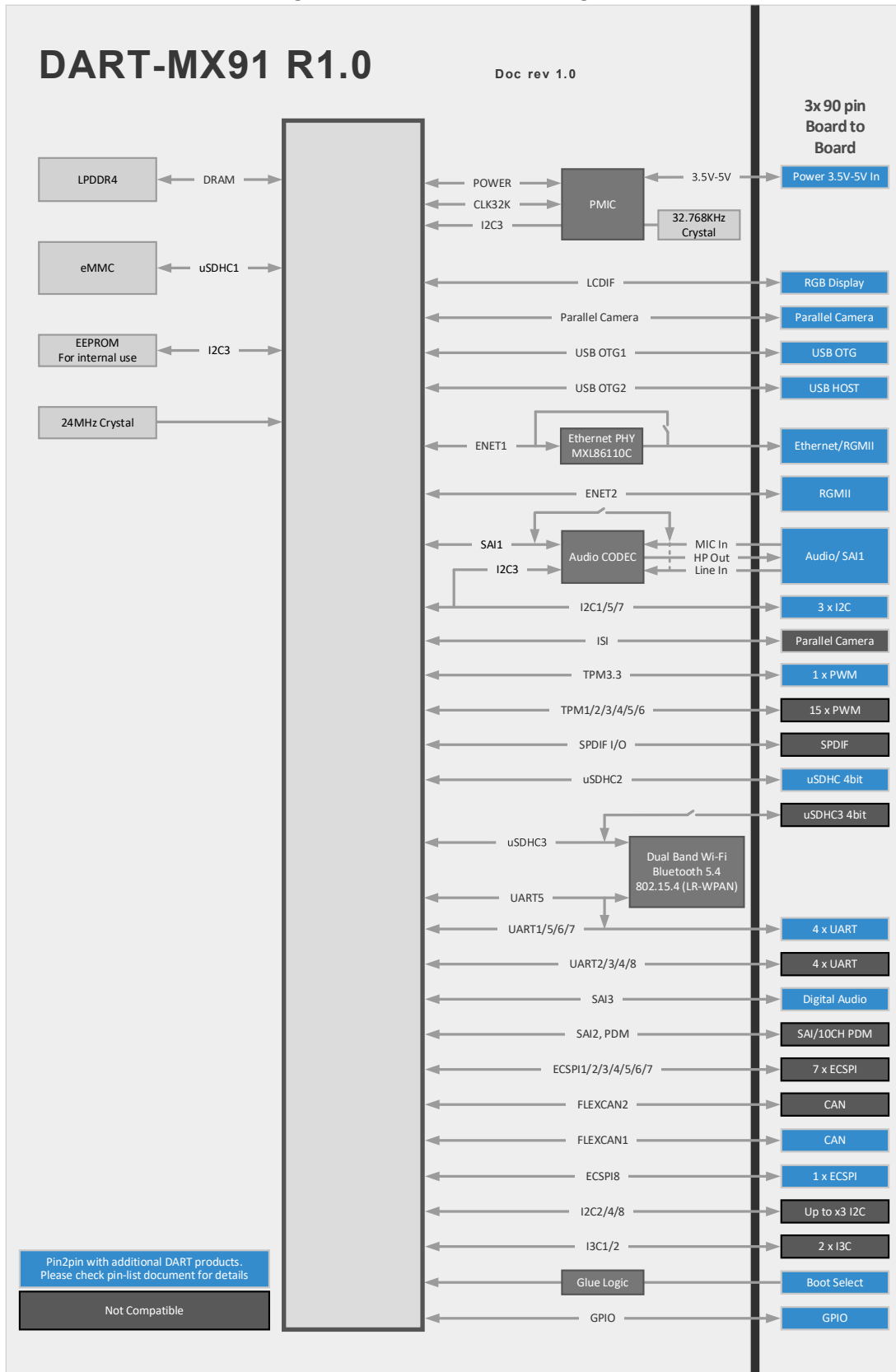
Contact Variscite support services for further information: support@variscite.com.

4.2 Feature Summary

- Cortex®-A55 MPCore platform
 - Two Cortex®-A55 processors operating up to 1.7 GHz
 - Media Processing Engine (MPE) with Arm® NEON™ technology supporting the Advanced Single Instruction Multiple Data architecture
 - Floating Point Unit (FPU) with support of the Arm® VFPv4-D16 architecture
 - Support of 64-bit Arm® v8.2-A architecture
 - 256 KB cluster L2 cache
 - Parity/ECC protection on L1 cache, L2 cache, and TLB RAMs
- Image Sensor Interface (ISI)
 - Standard pixel formats commonly used in many camera input protocols
 - Programmable resolutions up to 2K
 - Image processing for:
 - Supports one source of up to 2K horizontal resolution
 - Supports pixel rate up to 200 Mpixel/s
 - Image down scaling via decimation and bi-phase filtering
 - Color space conversion
 - Interlaced to progressive conversions
- On-chip memory
 - Boot ROM (256 KB) for Cortex®-A55
 - On-chip RAM (384 KB)
- RAM memory
 - Up to 2GBytes of LPDDR4 RAM
- Storage
 - Up to 128GBytes of eMMC5.1 (8bit) interface supporting up to 400MB/sec
- Pixel Pipeline (PXP)
 - Flexible image composition options—alpha, chroma key
 - Porter-Duff operation
 - Image rotation (90o, 180o, 270o)
 - Image resize
 - Color space conversion
 - Multiple pixel format support (RGB, YUV444, YUV422, YUV420, YUV400)
 - Standard 2D-DMA operation
- LCDIF Display Controller
 - The LCDIF can drive any parallel LCD up to 1366x768p60 or 1280x800p60 resolution
- Other Interfaces
 - SDIO/MMC
 - Resistive touch controller
 - Serial interfaces (ECSPI, FlexSPI, I2C, UART, CAN, JTAG, SAI)
 - GPIOs
- Single power supply: 3.5V - 5V
- Dimensions (W x L x H): 30 mm x 55 mm x 5.13 mm
- Industrial temperature range: -40°C to 85°C

4.3 Block Diagram

Figure 1 : DART-MX91 Block Diagram



5. Main Hardware Components

This section summarizes the main hardware building blocks of the DART-MX91.

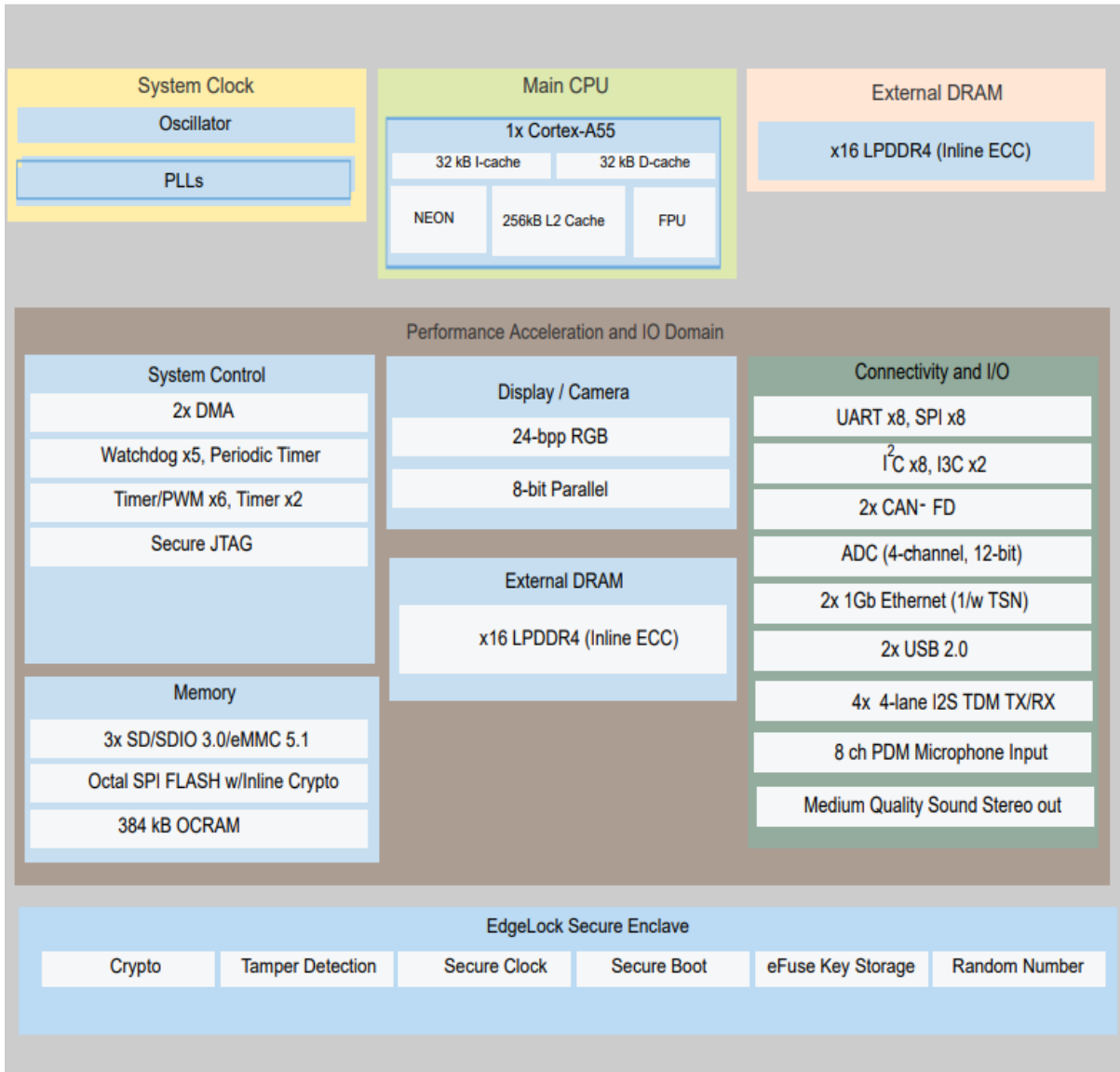
5.1 NXP i.MX 91

5.1.1 Overview

The i.MX 91 family of applications processors enables the rapid creation of new Linux[®]-based edge devices, such as smart home controllers, connected appliances, home entertainment, industrial, and medical platforms. Emerging protocols, such as Matter™ for the smart home or the ISO 15118-20 standard for electric vehicle (EV) chargers, create inflection points for new product categories across IoT and industrial markets. Next-generation Linux-based devices based on i.MX 91 SoC will be high-performance, affordable, and secure solutions, enabling adaption to updated protocols or new standards as they are introduced. The i.MX 91 SoC's integrated EdgeLock[®] Secure Enclave provides security features, including lifecycle management, tamper detection, secure boot, and a simplified path to certifications. The i.MX 91 family features an Arm[®] Cortex[®]-A55 running at up to 1.4GHz, support for modern LPDDR4 memory to enable platform longevity, dual Gigabit Ethernet, and dual USB ports, along with a rich set of peripherals targeting medical, industrial and consumer IoT market segments. Part of the EdgeVerse™ portfolio of intelligent edge solutions, the i.MX 91 family will be offered in consumer and industrial qualification and backed by NXP's product longevity program.

5.1.2 i.MX91 Block Diagram

Figure 2 : i.MX91 Block Diagram



5.1.3 Arm Cortex®-A55 MPCore cluster

- One cluster of Cortex-A55 cores
- The core includes 32kB L1-I, 32kB L1-D and 256kB L2 cache
- Core cache protection (parity/ECC) supported

5.1.4 On Chip Memory

- Boot ROM (256KB)
- 384KB of SoC-specific OCRAM

5.1.5 External Memory

- One 16-bit DRAM controller:
 - Maximum supported capacity is 2GByte
 - LPDDR4 supported

5.1.6 Graphics

- LCDIF display
 - Parallel display (up to 1366x768 or 1280x800)
- ISI camera interface
 - Parallel camera

5.1.7 Audio

- SPDIF supports raw capture mode that can save all the incoming bits into audio buffer.
- Up to 3x Synchronous Audio Interface (SAI) modules supporting I2S, AC97, TDM, and Codec/DSP interfaces
- Digital microphone input, up to 8-channel PDM

Note: The above list refers to the chip capabilities, part of the pins is used on the SOM therefore the exact number of interfaces can be lower.

5.1.8 Connectivity

- 2x USB 2.0 OTG controller with integrated PHY interfaces
- 3x Ultra Secure Digital Host Controller (uSDHC) interfaces
 - uSDHC1 with boot support for eMMC 5.1 compliance with HS400 DDR signaling to support up to 400 MB/sec
 - uSDHC2 with boot support for SD/SDIO 3.0 compliance with 200 MHz SDR signaling to support up to 100 MB/sec
 - Support for SDXC (extended capacity)
 - USDHC3 to support use cases that need simultaneous support for all three of 1x eMMC, 1x SD Card and 1x SDIO (for WIFI connectivity)
- Up to 8x Universal asynchronous receiver/transmitter (LPUARTs) modules
- Up to 8x LPSPI modules
- Up to 8x I2C modules
- Up to 2x I3C modules
- Up to 2x CAN-FD modules
- Up to 1x 1G-bit Ethernet with AVB support (ENET)
- 1x 1G-bit Ethernet with AVB, QoS Support (Ethernet QoS)

Note: The above list refers to the chip capabilities, part of the pins is used on the SOM therefore the exact number of interfaces can be lower.

5.1.9 Timers and PWMs

- 2x Low Power Periodical Interrupt Timer (LPIT)
 - 4 channels
 - 4 external trigger sources
 - Generic 32-bit resolution timer
 - Periodical interrupt generation
- 6x Timer/PWM module (TPM)
 - Prescaler divide-by 1, 2, 4, 8, 16, 32, 64, or 128
 - 16-bit counter, support free-running counter or modulo counter mode, counting-up or down
 - Includes 6 channels that can be configured for input capture, output compare, edge-aligned PWM mode, or center aligned PWM mode
- 2x Low-Power Timer (LPTMR)
- 5x WatchDog modules (WDOG)

Note: The above list refers to the chip capabilities, part of the pins is used on the SOM therefore the exact number of interfaces can be lower.

5.1.10 GPIO and Pin Multiplexing:

- General-purpose input/output (GPIO) modules with interrupt capability
- Input/output multiplexing controller (IOMUXC) to provide centralized pad control

5.1.11 Analog:

- 1x 12-bit Analog Digital Converter (ADC)

5.1.12 Security:

- TRDC – Resource Domain Controller
 - Supports up to 16 resource domains
- Arm TrustZone® (TZ) architecture
- Secure and trusted access control
- Battery Backed Security Module (BBSM)
 - Monotonic counter - Secure real-time clock (RTC) - Zeroizable Master Key

5.1.13 System Debug

- Arm CoreSight® debug and trace architecture
- Trace Port Interface Unit (TPIU) to support off-chip real-time trace
- Support for 5-pin (JTAG) and SWD debug interfaces

5.1.14 Power Management

- One PMIC to supply all power rails.
- Temperature sensor with programmable trim points
- GPC hardware power management controller
 -

5.2 Memory

5.2.1 RAM

The DART-MX91 is available with up to 2GB of LPDDR4 memory.

5.2.2 Non-volatile Storage Memory

The DART-MX91 is available with a non-volatile MLC eMMC storage memory with optional densities of up to 128GB. It is used for Flash Disk purposes, O.S. run-time images, Bootloaders, and application/user data storage.

5.3 Audio (WM8904)

The WM8904 is a high performance ultra-low power stereo CODEC optimized for portable audio applications.

The device features stereo ground-referenced headphone amplifiers using the Wolfson 'Class-W' amplifier techniques. It incorporates an innovative dual-mode charge pump architecture - to optimize efficiency and power consumption during playback.

The ground-referenced headphone output eliminates AC coupling capacitors, and both outputs include common mode feedback paths to reject ground noise. Control sequences for audio path setup can be pre-loaded and executed by an integrated control write sequencer to reduce software driver development and minimize pops and clicks via SilentSwitch™ technology. The input impedance is constant with PGA gain setting. A stereo digital microphone interface is provided, with a choice of two inputs. A dynamic range controller provides compression and level control to support a wide range of portable recording applications. Anti-clip and quick release features offer good performance in the presence of loud impulsive noises. ReTune™ Mobile 5-band parametric equalizer with fully programmable coefficients is integrated for optimization of speaker characteristics. Programmable dynamic range control is also available for maximizing loudness, protecting speakers from clipping, and preventing premature shutdown due to battery droop. Common audio sampling frequencies are supported from a wide range of external clocks, either directly or generated via the FLL.

Features:

- 3.0mW quiescent power consumption for DAC to headphone playback
- DAC SNR 96dB typical, THD -86dB typical
- ADC SNR 91dB typical, THD -80dB typical
- 2.4mW quiescent power consumption for analogue bypass playback
- Control write sequencer for pop minimized start-up and shutdown
- Single register writes for default start-up sequence
- Integrated FLL provides all necessary clocks - Self-clocking modes allow processor to sleep - All standard sample rates from 8kHz to 96kHz
- Stereo digital microphone input
- 2 single ended inputs per stereo channel
- Digital Dynamic Range Controller (compressor / limiter)
- Digital sidetone mixing
- Ground-referenced headphone driver

5.4 Wi-Fi + BT + LR-WPAN

DART-MX91 module can be configured either for using one of two Wi-Fi modules based on NXP chipset:

- 2.4GHz & 5GHz Wi-Fi® + Bluetooth® + 802.15.4 Module based on NXP IW612 chipset
- 2.4GHz & 5GHz Wi-Fi® + Bluetooth® Module based on NXP IW611 chipset

Both realize the necessary PHY/MAC layers to support WLAN applications in conjunction with a host processor over a SDIO interface.

The modules also provide a Bluetooth/BLE platform through the HCI transport layer. Both WLAN and Bluetooth share the same antenna port or may be ordered with dual antenna ports.

The SOM can be ordered with 802.15.4 low-rate wireless personal area network (LR-WPAN)

DART-MX91 Wi-Fi Key Features:

- 1x1 2.4/5 GHz, up to 80 MHz channel
- UL/DL MU-MIMO and OFDMA
- Target Wake Time, Dual Carrier Modulation, Extended Range
- 802.11az accurate ranging
- WPA3 security

DART-MX91 Bluetooth Key Features:

- Supports Bluetooth 5.4
- Integrated high power PA up to +20 dBm transmit power
- Full featured Bluetooth baseband
- SCO/eSCO links with hardware accelerated audio signal processing
- Bluetooth LE 2 Mbit/s, Long Range, Advertising Extensions
- LE Audio with Isochronous channels (I2S/PCM)

DART-MX91 802.15.4 Key Features:

- IEEE 802.15.4-2015 compliant supporting Thread in 2.4 GHz band
- Integrated high power PA up to +20 dBm transmit power
- Shared transmitter and antenna pin with Bluetooth
- Simultaneous receive with Bluetooth

5.4.1 DART-MX91 2.4GHz & 5GHz Wi-Fi® + Bluetooth® + 802.15.4 Option

The DART-MX91 contains Murata's certified high-performance Type 2EL Module based upon the NXP IW612 chipset supporting Wi-Fi® 11a/b/g/n/ac/ax + Bluetooth® 5.4 + 802.15.4 wireless connectivity.

5.4.2 DART-MX91 2.4GHz & 5GHz Wi-Fi® + Bluetooth® Option

The DART-MX91 contains Murata's certified high-performance Type 2DL Module based upon the NXP IW611 chipset supporting Wi-Fi® 11a/b/g/n/ac/ax + Bluetooth® 5.4 wireless connectivity.

5.5 PMIC

The DART-MX91 features NXP's PCA9541 chip as a Power Management Integrated circuit (PMIC) designed specifically for use with NXP's i.MX 91 series of application processors. The PCA9541 regulates power rails required on SOM from a single 3.3V power supply.

The PMIC is fully programmable via the I2C interface and associated register map.

Additional communication is provided by direct logic interfacing including interrupt, watchdog and reset.

5.6 10/100/1000 Mbps Ethernet Transceiver

The DART-MX91 features on board an MXL86110C or MXL86110I Integrated Ethernet Transceiver.

Key features include:

- 1000BASE-T (IEEE 802.3), 100BASE-TX (IEEE 802.3) and 10BASE-Te (IEEE 802.3)
- Ethernet twisted pair copper cable of category CAT5 or higher
- Low EMI voltage mode line driver with integrated termination resistors
- Transformer less Ethernet for backplane applications
- Auto-Negotiation (ANEG) with extended next page support
- Auto-MDIX and polarity correction
- Auto-Down speed (ADS)
- Energy-Efficient Ethernet (EEE) and power down mode
- Wake-on-LAN (WoL)
- 10k byte jumbo frame support
- RGMII Interface
- An MDIO slave interface supports IEEE 802.3 Clause 22 and Clause 45
- An MDIO interface clock of up to 12.5 MHz
- Three MDIO message frame types: Clause 22, Clause 22 Extended, and Clause 45
- Two fully programmable LEDs

5.7 EEPROM

The DART-MX91 uses 4Kbit serial EEPROM to store memory calibration and manufacturing parameters.

This EEPROM is connected to I2C3 bus and intended only for holding the above information.

The SOM may not boot if the contents of EEPROM device are corrupted.

6. DART-MX91 Hardware Configuration

The table below lists the Hardware configurations options orderable for the DART-MX91.

Table 1: Hardware Configuration Options

| Option | Description |
|--------------|---|
| EC | Ethernet PHY assembled on SOM |
| AC | Audio Codec assembled on SOM |
| WBE | 2.4GHz & 5GHz Wi-Fi® + Bluetooth® + 802.15.4 Module assembled on SOM |
| WBD | 2.4GHz & 5GHz Wi-Fi® + Bluetooth® Module assembled on SOM |
| COEX | Expose WCI-2 coexistence management lines needed only in case another RF part should be synchronised with the internal Wi-Fi module |
| BTRST | Expose Bluetooth® and 802.15.4 reset lines |
| ANT2 | Dual antenna mode. ANT1 for Wi-Fi, ANT2 for BT and 802.15.4 |
| WRST | Expose 2.4GHz & 5GHz Wi-Fi® reset line needed only for disabling the RF in HW |
| SDEX | Expose uSDHC3 interface, available only when no WBD/WBE is selected |

Note 1: Additional orderable options may be available that are not included in this datasheet. For a complete list of configuration options, please visit the Variscite official website or contact their sales personnel.

7. External Connectors

7.1 Board to Board Connector

- The DART-MX91 exposes three 90-pin board-to-board connectors.
- The recommended mating connector is: **Hirose Electric Co Ltd PN: DF40C-90DS-0.4V(51)**

7.2 Wi-Fi & BT, 802.15.4 Connector

In Modules with Wi-Fi “WBE” or “WBD” Configuration - a combined Wi-Fi + BT antenna connector is assembled. In case of “ANT2” Configuration dual Antenna connectors are assembled.

- Connector type: U.FL JACK connector
- Cable and antenna shall have a 50 Ohm characteristic impedance

7.3 DART-MX91 Connector Pin-out

Table 2: DART-MX91 Pinout

| Pin | Assembly Option | Pad Name | Notes | GPIO | Ball |
|-------|-----------------|----------------|--|------------|--------------|
| J1.1 | | PMIC_NINT | Runs @ 1.8V. Has an internal 100K pull up. | | PCA9451.13 |
| J1.2 | EC | ETH0_MDI_B_P | | | MxL86110x.4 |
| J1.2 | Non-EC | ENET1_TD1 | Runs @ 1.8V. | GPIO4_IO4 | SOC.T12 |
| J1.3 | EC | NC | | | |
| J1.3 | Non-EC | ENET1_TX_CTL | Runs @ 1.8V. | GPIO4_IO6 | SOC.V10 |
| J1.4 | EC | ETH0_MDI_B_M | | | MxL86110x.5 |
| J1.4 | Non-EC | ENET1_TD0 | Runs @ 1.8V. | GPIO4_IO5 | SOC.W11 |
| J1.5 | EC | LED_LINK10_100 | Connected to GND | | |
| J1.5 | Non-EC | ENET1_TXC | Runs @ 1.8V. | GPIO4_IO7 | SOC.U10 |
| J1.6 | EC | ETH0_MDI_A_M | | | MxL86110x.2 |
| J1.6 | Non-EC | ENET1_TD2 | Runs @ 1.8V. | GPIO4_IO3 | SOC.U12 |
| J1.7 | EC | ETH0_LED_LINK | | | MxL86110x.33 |
| J1.7 | Non-EC | ENET1_RXC | Runs @ 1.8V. Has EMI filter. | GPIO4_IO9 | SOC.AA7 |
| J1.8 | EC | ETH0_MDI_A_P | | | MxL86110x.1 |
| J1.8 | Non-EC | ENET1_TD3 | Runs @ 1.8V. | GPIO4_IO2 | SOC.V12 |
| J1.9 | EC | ETH0_LED_ACT | | | MxL86110x.34 |
| J1.9 | Non-EC | ENET1_RX_CTL | Runs @ 1.8V. | GPIO4_IO8 | SOC.Y8 |
| J1.10 | EC | ETH0_MDI_C_P | | | MxL86110x.6 |
| J1.10 | Non-EC | ENET1_RD0 | Runs @ 1.8V. | GPIO4_IO10 | SOC.AA8 |
| J1.11 | | ENET1_MDIO | Runs @ 3.3V. Routed through PMIC internal voltage translator. Has an internal 1.47K pull up. | GPIO4_IO1 | SOC.AA10 |
| J1.12 | EC | ETH0_MDI_C_M | | | MxL86110x.7 |
| J1.12 | Non-EC | ENET1_RD1 | Runs @ 1.8V. | GPIO4_IO11 | SOC.Y9 |
| J1.13 | | ENET1_MDC | Runs @ 3.3V. Routed through PMIC internal voltage translator. Has an internal 1.47K pull up. | GPIO4_IO0 | SOC.AA11 |
| J1.14 | EC | ETH0_MDI_D_P | | | MxL86110x.9 |
| J1.14 | Non-EC | ENET1_RD2 | Runs @ 1.8V. | GPIO4_IO12 | SOC.AA9 |
| J1.15 | | NVCC_BBSM | | | PCA9451.3 |
| J1.16 | EC | ETH0_MDI_D_M | | | MxL86110x.10 |
| J1.16 | Non-EC | ENET1_RD3 | Runs @ 1.8V. | GPIO4_IO13 | SOC.Y10 |
| J1.17 | | GPIO_IO07 | | GPIO2_IO7 | SOC.L21 |
| J1.18 | | GND | | | |
| J1.19 | | GPIO_IO06 | | GPIO2_IO6 | SOC.L20 |

DART-MX91 SYSTEM ON MODULE

| Pin | Assembly Option | Pad Name | Notes | GPIO | Ball |
|-------|-----------------|----------------|---|------------|---------------|
| J1.20 | | ONOFF | Runs @ 1.8V. | | SOC.A19 |
| J1.21 | | GND | | | |
| J1.22 | | PMIC_RST_B | Runs @ 1.8V. Pull low to hold DART internal regulators OFF. Pulse low for cold reboot. Has an internal 100K pull up. | | PCA9451.8 |
| J1.23 | WBD/WBE | BT_HOST_WAKE | Runs @ 1.8V. | | LBES5PL2xL.76 |
| J1.23 | Non-WBD/WBE | NC | | | |
| J1.24 | | POR_B | Runs @ 1.8V. Pull low to hold SOC in reset state. Pulse low for Warm reboot. Has an internal 100K pull up. | | PCA9451.9 |
| J1.25 | WBD/WBE | WIFI_HOST_WAKE | Runs @ 1.8V. | | LBES5PL2xL.73 |
| J1.25 | Non-WBD/WBE | NC | | | |
| J1.26 | | PMIC_STBY_REQ | Runs @ 1.8V. | | SOC.B18 |
| J1.27 | | VDD_3V3 | Power output from PMIC. Recommend to use as base board 3.3V regulator enable. | | PCA9451.19 |
| J1.28 | | CCM_CLKO3 | Runs @ 1.8V. | GPIO4_IO28 | SOC.U4 |
| J1.29 | | NC | | | |
| J1.30 | | GND | | | |
| J1.31 | | NC | | | |
| J1.32 | WBD/WBE | BT_DEV_WAKE | Runs @ 1.8V. | | LBES5PL2xL.75 |
| J1.32 | Non-WBD/WBE | NC | | | |
| J1.33 | | GND | | | |
| J1.34 | | NC | | | |
| J1.35 | | NC | | | |
| J1.36 | WBD/WBE | BT_PCM_IN | Runs @ 1.8V. | | LBES5PL2xL.91 |
| J1.36 | Non-WBD/WBE | NC | | | |
| J1.37 | | NC | | | |
| J1.38 | | NC | | | |
| J1.39 | WBD/WBE | RF_CNTL1 | Runs @ 1.8V. | | LBES5PL2xL.26 |
| J1.39 | Non-WBD/WBE | NC | | | |
| J1.40 | | NC | | | |
| J1.41 | | NC | | | |
| J1.42 | | NC | | | |
| J1.43 | | NC | | | |
| J1.44 | | NC | | | |
| J1.45 | | NC | | | |
| J1.46 | | NC | | | |

DART-MX91 SYSTEM ON MODULE

| Pin | Assembly Option | Pad Name | Notes | GPIO | Ball |
|-------|-----------------|--------------|--------------|------|---------------|
| J1.47 | | NC | | | |
| J1.48 | | NC | | | |
| J1.49 | | GND | | | |
| J1.50 | | NC | | | |
| J1.51 | | NC | | | |
| J1.52 | BTRST | BT_KILL | Runs @ 1.8V. | | LBES5PL2xL.64 |
| J1.52 | Non-BTRST | NC | | | |
| J1.53 | | NC | | | |
| J1.54 | WBD/WBE | BT_PCM_CLK | Runs @ 1.8V. | | LBES5PL2xL.57 |
| J1.54 | Non-WBD/WBE | NC | | | |
| J1.55 | WBD/WBE | WLAN_SPI_CS0 | Runs @ 1.8V. | | LBES5PL2xL.4 |
| J1.55 | Non-WBD/WBE | NC | | | |
| J1.56 | WBD/WBE | BT_PCM_OUT | Runs @ 1.8V. | | LBES5PL2xL.59 |
| J1.56 | Non-WBD/WBE | NC | | | |
| J1.57 | | NC | | | |
| J1.58 | WRST | WB_KILL | Runs @ 1.8V. | | LBES5PL2xL.63 |
| J1.58 | Non-WRST | NC | | | |
| J1.59 | | NC | | | |
| J1.60 | | NC | | | |
| J1.61 | WBE | WLAN_SPI_RXD | Runs @ 1.8V. | | LBES5PL2xL.6 |
| J1.61 | Non-WBE | NC | | | |
| J1.62 | | NC | | | |
| J1.63 | WBE | WLAN_SPI_TXD | Runs @ 1.8V. | | LBES5PL2xL.7 |
| J1.63 | Non-WBE | NC | | | |
| J1.64 | WBD/WBE | RF_CNTL0 | Runs @ 1.8V. | | LBES5PL2xL.27 |
| J1.64 | Non-WBD/WBE | GND | | | |
| J1.65 | WBD/WBE | BT_PCM_SYNC | Runs @ 1.8V. | | LBES5PL2xL.61 |
| J1.65 | Non-WBD/WBE | NC | | | |
| J1.66 | WBD/WBE | RF_CNTL3 | Runs @ 1.8V. | | LBES5PL2xL.25 |
| J1.66 | Non-WBD/WBE | NC | | | |
| J1.67 | WBE | WLAN_SPI_CLK | Runs @ 1.8V. | | LBES5PL2xL.8 |
| J1.67 | Non-WBE | GND | | | |
| J1.68 | WBD/WBE | RF_CNTL4 | Runs @ 1.8V. | | LBES5PL2xL.24 |
| J1.68 | Non-WBD/WBE | NC | | | |
| J1.69 | | NC | | | |
| J1.70 | BTRST | LR_KILL | Runs @ 1.8V. | | LBES5PL2xL.38 |

DART-MX91 SYSTEM ON MODULE

| Pin | Assembly Option | Pad Name | Notes | GPIO | Ball |
|-------|-----------------|------------|---|------------|------------|
| J1.70 | Non-BTRST | NC | | | |
| J1.71 | | NC | | | |
| J1.72 | | NC | | | |
| J1.73 | | NC | | | |
| J1.74 | | SD2_CD_B | External SD card detect input. Will change level according to J1.90 NVCC_SD. | GPIO3_IO0 | SOC.Y17 |
| J1.75 | | NC | | | |
| J1.76 | | GND | | | |
| J1.77 | | NC | | | |
| J1.78 | | SD2_DATA2 | Will change level according to J1.90 NVCC_SD. | GPIO3_IO5 | SOC.Y20 |
| J1.79 | | NC | | | |
| J1.80 | | SD2_DATA1 | Will change level according to J1.90 NVCC_SD. | GPIO3_IO4 | SOC.AA18 |
| J1.81 | | NC | | | |
| J1.82 | | SD2_CLK | Will change level according to J1.90 NVCC_SD. | GPIO3_IO1 | SOC.AA19 |
| J1.83 | | NC | | | |
| J1.84 | | SD2_DATA3 | Will change level according to J1.90 NVCC_SD. | GPIO3_IO6 | SOC.AA20 |
| J1.85 | | GND | | | |
| J1.86 | | SD2_DATA0 | Will change level according to J1.90 NVCC_SD. | GPIO3_IO3 | SOC.Y18 |
| J1.87 | | NC | | | |
| J1.88 | | SD2_CMD | Will change level according to J1.90 NVCC_SD. | GPIO3_IO2 | SOC.Y19 |
| J1.89 | | NC | | | |
| J1.90 | | NVCC_SD | Power output for SD2 pins reference 1.8V/3.3V. | | PCA9451.55 |
| J2.1 | | NC | | | |
| J2.2 | AC | HPLOUT | 100nF and 20Ω Zobel network required | | WM8904.13 |
| J2.2 | Non-AC | SAI1_RXD0 | | GPIO1_IO14 | SOC.H20 |
| J2.3 | | NC | | | |
| J2.4 | AC | HPROUT | 100nF and 20Ω Zobel network required | | WM8904.15 |
| J2.4 | Non-AC | SAI1_TXC | | GPIO1_IO12 | SOC.G20 |
| J2.5 | | NC | | | |
| J2.6 | AC | HPOUTFB | | | WM8904.14 |
| J2.6 | Non-AC | I2C2_SCL | | GPIO1_IO2 | SOC.D20 |
| J2.7 | | NC | | | |
| J2.8 | AC | LINEIN1_LP | | | WM8904.26 |
| J2.8 | Non-AC | I2C2_SDA | | GPIO1_IO3 | SOC.D21 |
| J2.9 | | NC | | | |
| J2.10 | AC | LINEIN1_RP | | | WM8904.24 |
| J2.10 | Non-AC | SAI1_TXFS | BOOT_MODE2 pin. Has an internal SOC PD. | GPIO1_IO11 | SOC.G21 |

DART-MX91 SYSTEM ON MODULE

| Pin | Assembly Option | Pad Name | Notes | GPIO | Ball |
|-------|-----------------|------------------|---|------------|-----------|
| | | | Do not drive until after POR_B rise + 30ms | | |
| J2.11 | | NC | | | |
| J2.12 | | AGND | | | |
| J2.13 | | NC | | | |
| J2.14 | AC | DMIC_CLK | DMIC output. | | WM8904.1 |
| J2.14 | Non-AC | SAI1_TXD0 | BOOT_MODE3 pin. Has an internal SOC PD. Do not drive until after POR_B rise + 30ms. | GPIO1_IO13 | SOC.H21 |
| J2.15 | | NC | | | |
| J2.16 | AC | DMIC_DATA | Runs @ 1.8V. DMIC input. | | WM8904.27 |
| J2.16 | Non-AC | UART2_RXD | | GPIO1_IO6 | SOC.F20 |
| J2.17 | | NC | | | |
| J2.18 | | GND | | | |
| J2.19 | | NC | | | |
| J2.20 | | DAP_TDO_TRACESWO | Runs @ 1.8V. Used on DART for BT communication. Pin can be used when BT disabled. | GPIO3_IO31 | SOC.Y2 |
| J2.21 | | NC | | | |
| J2.22 | | DAP_TMS_SWDIO | Runs @ 1.8V. Used on DART for BT communication. Pin can be used when BT disabled. | GPIO3_IO29 | SOC.W2 |
| J2.23 | | GND | | | |
| J2.24 | | DAP_TDI | Runs @ 1.8V. Used on DART for BT communication. Pin can be used when BT disabled. | GPIO3_IO28 | SOC.W1 |
| J2.25 | SDEX | SD2_RESET_B | Runs @ J1.90 VDD_SDIO2 level. | GPIO3_IO7 | SOC.AA17 |
| J2.25 | Non-SDEX | NC | | | |
| J2.26 | | DAP_TCLK_SWCLK | Runs @ 1.8V. Used on DART for BT communication. Pin can be used when BT disabled. | GPIO3_IO30 | SOC.Y1 |
| J2.27 | SDEX | ENET2_MDIO | Runs @ 1.8V. | GPIO4_IO15 | SOC.AA6 |
| J2.27 | Non-SDEX | NC | | | |
| J2.28 | | WDOG_ANY | | GPIO1_IO15 | SOC.J18 |
| J2.29 | SDEX | SD3_DATA3 | Runs @ 1.8V. | GPIO3_IO25 | SOC.T14 |
| J2.29 | Non-SDEX | NC | | | |
| J2.30 | | I2C1_SDA | | GPIO1_IO1 | SOC.C21 |
| J2.31 | SDEX | SD3_DATA2 | Runs @ 1.8V. | GPIO3_IO24 | SOC.U14 |
| J2.31 | Non-SDEX | NC | | | |
| J2.32 | | I2C1_SCL | | GPIO1_IO0 | SOC.C20 |
| J2.33 | SDEX | SD3_DATA1 | Runs @ 1.8V. | GPIO3_IO23 | SOC.V14 |
| J2.33 | Non-SDEX | NC | | | |
| J2.34 | | GPIO_IO19 | | GPIO2_IO19 | SOC.R17 |

DART-MX91 SYSTEM ON MODULE

| Pin | Assembly Option | Pad Name | Notes | GPIO | Ball |
|-------|-----------------|-----------------|--------------|------------|---------------|
| J2.35 | SDEX | SD3_DATA0 | Runs @ 1.8V. | GPIO3_IO22 | SOC.T16 |
| J2.35 | Non-SDEX | NC | | | |
| J2.36 | | GPIO_IO20 | | GPIO2_IO20 | SOC.T20 |
| J2.37 | COEX | COEX_SIN | Runs @ 1.8V. | | LBES5PL2xL.69 |
| J2.37 | Non-COEX | NC | | | |
| J2.38 | | GPIO_IO16 | | GPIO2_IO16 | SOC.R21 |
| J2.39 | COEX | COEX_SOUT | Runs @ 1.8V. | | LBES5PL2xL.70 |
| J2.39 | Non-COEX | NC | | | |
| J2.40 | | GPIO_IO18 | | GPIO2_IO18 | SOC.R18 |
| J2.41 | | VDD | | | PCA9451.15 |
| J2.42 | | GPIO_IO26 | | GPIO2_IO26 | SOC.V20 |
| J2.43 | SDEX | SD3_CMD | Runs @ 1.8V. | GPIO3_IO21 | SOC.U16 |
| J2.43 | Non-SDEX | NC | | | |
| J2.44 | | GPIO_IO21 | | GPIO2_IO21 | SOC.T21 |
| J2.45 | SDEX | SD3_CLK | Runs @ 1.8V. | GPIO3_IO20 | SOC.V16 |
| J2.45 | Non-SDEX | NC | | | |
| J2.46 | | GPIO_IO17 | | GPIO2_IO17 | SOC.R20 |
| J2.47 | | GND | | | |
| J2.48 | | GPIO_IO10 | | GPIO2_IO10 | SOC.N17 |
| J2.49 | | NC | | | |
| J2.50 | | PDM_CLK | | GPIO1_IO8 | SOC.G17 |
| J2.51 | | NC | | | |
| J2.52 | | NC | | | |
| J2.53 | | GND | | | |
| J2.54 | | GPIO_IO27 | | GPIO2_IO27 | SOC.W21 |
| J2.55 | | NC | | | |
| J2.56 | | PDM_BIT_STREAM0 | | GPIO1_IO9 | SOC.J17 |
| J2.57 | | NC | | | |
| J2.58 | | NC | | | |
| J2.59 | | NC | | | |
| J2.60 | | GPIO_IO25 | | GPIO2_IO25 | SOC.V21 |
| J2.61 | | NC | | | |
| J2.62 | | NC | | | |
| J2.63 | | NC | | | |
| J2.64 | | ENET2_RX_CTL | Runs @ 1.8V. | GPIO4_IO22 | SOC.Y4 |
| J2.65 | | ENET2_RD0 | Runs @ 1.8V. | GPIO4_IO24 | SOC.AA4 |

| Pin | Assembly Option | Pad Name | Notes | GPIO | Ball |
|-------|-----------------|--------------|---|------------|--------------|
| J2.66 | | ENET2_RD2 | Runs @ 1.8V. | GPIO4_IO26 | SOC.AA5 |
| J2.67 | | ENET2_TD1 | Runs @ 1.8V. | GPIO4_IO18 | SOC.U8 |
| J2.68 | | ENET2_RD3 | Runs @ 1.8V. | GPIO4_IO27 | SOC.Y6 |
| J2.69 | | ENET2_RD1 | Runs @ 1.8V. | GPIO4_IO25 | SOC.Y5 |
| J2.70 | | ENET2_TD0 | Runs @ 1.8V. | GPIO4_IO19 | SOC.T8 |
| J2.71 | | ENET2_TXC | Runs @ 1.8V. | GPIO4_IO21 | SOC.U6 |
| J2.72 | | ENET2_RXC | Runs @ 1.8V. | GPIO4_IO23 | SOC.AA3 |
| J2.73 | | ENET2_TD3 | Runs @ 1.8V. | GPIO4_IO16 | SOC.T10 |
| J2.74 | | ENET2_TX_CTL | Runs @ 1.8V. | GPIO4_IO20 | SOC.V6 |
| J2.75 | | GND | | | |
| J2.76 | | CCM_CLKO1 | Runs @ 1.8V. Has an internal 12K pull down. | GPIO3_IO26 | SOC.AA2 |
| J2.77 | | GPIO_IO15 | | GPIO2_IO15 | SOC.P21 |
| J2.78 | | ENET2_TD2 | Runs @ 1.8V. Internal buffer connected to this pin. It drives BOOT_MODE0, latched with POR_B rise. | GPIO4_IO17 | SOC.V8 |
| J2.79 | | GPIO_IO12 | | GPIO2_IO12 | SOC.N20 |
| J2.80 | | GPIO_IO11 | | GPIO2_IO11 | SOC.N18 |
| J2.81 | | GPIO_IO13 | | GPIO2_IO13 | SOC.N21 |
| J2.82 | EC | ETH_INT | Runs @ 1.8V. Has an internal 1.47K pull up. | | MxL86110x.31 |
| J2.82 | Non-EC | NC | | | |
| J2.83 | | GPIO_IO14 | | GPIO2_IO14 | SOC.P20 |
| J2.84 | | GND | | | |
| J2.85 | | GPIO_IO05 | | GPIO2_IO05 | SOC.L18 |
| J2.86 | | GPIO_IO04 | | GPIO2_IO04 | SOC.L17 |
| J2.87 | | GPIO_IO09 | | GPIO2_IO09 | SOC.M21 |
| J2.88 | | UART1_RXD | Used as console debug on Variscite release. | GPIO1_IO04 | SOC.E20 |
| J2.89 | | GPIO_IO8 | | GPIO2_IO08 | SOC.M20 |
| J2.90 | | UART1_TXD | Used as console debug on Variscite release. BOOT_MODE0 pin. Do not drive until after POR_B rise + 30ms. Internal buffer connected to J2.78 drives this pin. The sate latched with POR_B rise. | GPIO1_IO05 | SOC.E21 |
| J3.1 | | NC | | | |
| J3.2 | | NC | | | |
| J3.3 | | NC | | | |
| J3.4 | | NC | | | |
| J3.5 | | NC | | | |
| J3.6 | | NC | | | |
| J3.7 | | NC | | | |

DART-MX91 SYSTEM ON MODULE

| Pin | Assembly Option | Pad Name | Notes | GPIO | Ball |
|-------|-----------------|--------------|---|------------|--------------|
| J3.8 | | NC | | | SOC.A4 |
| J3.9 | | GND | | | |
| J3.10 | | GND | | | |
| J3.11 | | NC | | | |
| J3.12 | | NC | | | |
| J3.13 | | NC | | | |
| J3.14 | | NC | | | |
| J3.15 | | GND | | | |
| J3.16 | | NC | | | |
| J3.17 | | NC | | | |
| J3.18 | | NC | | | |
| J3.19 | | NC | | | |
| J3.20 | | NC | | | |
| J3.21 | | GND | | | |
| J3.22 | | NC | | | |
| J3.23 | | NC | | | |
| J3.24 | | GND | | | |
| J3.25 | | NC | | | |
| J3.26 | | USB2_VBUS | Runs @ 5.0V. VBUS detect input | | SOC.E14 |
| J3.27 | | GND | | | |
| J3.28 | | NC | | | |
| J3.29 | | NC | | | |
| J3.30 | | GPIO_IO00 | | GPIO2_IO0 | SOC.J21 |
| J3.31 | | NC | | | SOC.E6 |
| J3.32 | WBE | WLAN_SPI_IRQ | Runs @ 1.8V. Has an internal 10K pullup. | | LBES5PL2xL.5 |
| J3.32 | Non-WBE | NC | | | |
| J3.33 | | GND | | | |
| J3.34 | | GND | | | |
| J3.35 | | NC | | | |
| J3.36 | | NC | | | |
| J3.37 | | NC | | | |
| J3.38 | | GPIO_IO02 | | GPIO2_IO2 | SOC.K20 |
| J3.39 | | GND | | | |
| J3.40 | | NC | | | |
| J3.41 | | NC | | | |
| J3.42 | | GPIO_IO22 | | GPIO2_IO22 | SOC.U18 |

DART-MX91 SYSTEM ON MODULE

| Pin | Assembly Option | Pad Name | Notes | GPIO | Ball |
|-------|-----------------|-----------------|---|------------|---------|
| J3.43 | | NC | | | |
| J3.44 | | USB2_ID | USB2 PHY native ID analogue input. Not recommended to use. | | SOC.E12 |
| J3.45 | | GND | | | |
| J3.46 | | GPIO_IO23 | | GPIO2_IO23 | SOC.U20 |
| J3.47 | | USB2_D_P | | | SOC.B15 |
| J3.48 | | CCM_CLKO2 | Runs @ 1.8V. | GPIO3_IO27 | SOC.Y3 |
| J3.49 | | USB2_D_N | | | SOC.A15 |
| J3.50 | | GPIO_IO01 | | GPIO2_IO1 | SOC.J20 |
| J3.51 | | GND | | | |
| J3.52 | | CCM_CLKO4 | Runs @ 1.8V. | GPIO4_IO29 | SOC.V4 |
| J3.53 | | NC | | | |
| J3.54 | | NC | | | |
| J3.55 | | NC | | | |
| J3.56 | | USB1_ID | USB2 PHY native ID analogue input. Not recommended to use. | | SOC.C11 |
| J3.57 | | GND | | | |
| J3.58 | | GPIO_IO03 | | GPIO2_IO3 | SOC.K21 |
| J3.59 | | NC | | | |
| J3.60 | | NC | | | |
| J3.61 | | NC | | | |
| J3.62 | | PDM_BIT_STREAM1 | | GPIO1_IO10 | SOC.G18 |
| J3.63 | | GND | | | |
| J3.64 | | GPIO_IO24 | | GPIO2_IO24 | SOC.U21 |
| J3.65 | | USB1_D_P | | | SOC.B14 |
| J3.66 | | USB1_VBUS | Runs @ 5.0V. VBUS detect input. | | SOC.F12 |
| J3.67 | | USB1_D_N | | | SOC.A14 |
| J3.68 | | GND | | | |
| J3.69 | | NC | | | |
| J3.70 | | TAMPER0 | Runs @ 1.8V. | | SOC.B16 |
| J3.71 | | VBAT | | | |
| J3.72 | | TAMPER1 | Runs @ 1.8V. | | SOC.F14 |
| J3.73 | | VBAT | | | |
| J3.74 | | GND | | | |
| J3.75 | | VBAT | | | |
| J3.76 | | ADC_IN0 | Runs @ 1.8V. | | SOC.B19 |
| J3.77 | | VBAT | | | |
| J3.78 | | ADC_IN1 | Runs @ 1.8V. | | SOC.A20 |

DART-MX91 SYSTEM ON MODULE

| Pin | Assembly Option | Pad Name | Notes | GPIO | Ball |
|-------|-----------------|-------------|---|------|---------|
| J3.79 | | VBAT | | | |
| J3.80 | | ADC_IN2 | Runs @ 1.8V. | | SOC.B20 |
| J3.81 | | VBAT | | | |
| J3.82 | | ADC_IN3 | Runs @ 1.8V. | | SOC.B21 |
| J3.83 | | VBAT | | | |
| J3.84 | | CLKIN1 | Runs @ 1.8V. Has an internal 100K pull down. | | SOC.B17 |
| J3.85 | | VBAT | | | |
| J3.86 | | CLKIN2 | Runs @ 1.8V. Has an internal 100K pull down. | | SOC.A18 |
| J3.87 | | VBAT | | | |
| J3.88 | | PMIC_ON_REQ | Runs @ 1.8V. | | SOC.A17 |
| J3.89 | | VBAT | | | |
| J3.90 | | NC | | | |

7.4 DART-MX91 Connector Pin Mux

Table 3: DART-MX91 PINMUX

| Pin | Assy | Alt0 | Alt1 | Alt2 | Alt3 | Alt4 | Alt5 | Alt6 | Alt7 |
|-------|--------|-----------------------|-------------------------|-------------------|--------------|-----------|--------------|------------|--------------|
| J1.02 | Non-EC | enet_qos.RGMII_TD1 | uart3.RTS_B | i3c2.PUR | usb1.OTG_OC | | gpio4.IO[4] | i3c2.PUR_B | |
| J1.03 | Non-EC | enet_qos.RGMII_TX_CTL | uart3.DTR_B | spi2.SCK | | | gpio4.IO[6] | | |
| J1.04 | Non-EC | enet_qos.RGMII_TD0 | uart3.TX | | | | gpio4.IO[5] | | |
| J1.05 | Non-EC | enet_qos.RGMII_TXC | enet_qos.TX_ER | spi2.SIN | | | gpio4.IO[7] | | |
| J1.06 | Non-EC | enet_qos.RGMII_TD2 | enet_qos.TX_CLK | can2.RX | usb2.OTG_OC | | gpio4.IO[3] | i2c2.SDA | |
| J1.07 | Non-EC | enet_qos.RGMII_RXC | enet_qos.RX_ER | spi2.SOUT | | | gpio4.IO[9] | | |
| J1.08 | Non-EC | enet_qos.RGMII_TD3 | | can2.TX | usb2.OTG_ID | | gpio4.IO[2] | i2c2.SCL | |
| J1.09 | Non-EC | enet_qos.RGMII_RX_CTL | uart3.DSR_B | spi2.PCS0 | usb2.OTG_PWR | | gpio4.IO[8] | | |
| J1.10 | Non-EC | enet_qos.RGMII_RD0 | uart3.RX | | | | gpio4.IO[10] | | |
| J1.11 | | enet_qos.MDIO | uart3.RIN_B | i3c2.SDA | usb1.OTG_PWR | | gpio4.IO[1] | i2c1.SDA | |
| J1.12 | Non-EC | enet_qos.RGMII_RD1 | uart3.CTS_B | | lptmr2.ALT1 | | gpio4.IO[11] | | |
| J1.13 | | enet_qos.MDC | uart3.DCD_B | i3c2.SCL | usb1.OTG_ID | | gpio4.IO[0] | i2c1.SCL | |
| J1.14 | Non-EC | enet_qos.RGMII_RD2 | | | lptmr2.ALT2 | | gpio4.IO[12] | | |
| J1.16 | Non-EC | enet_qos.RGMII_RD3 | | | lptmr2.ALT3 | | gpio4.IO[13] | | |
| J1.17 | | gpio2.IO[7] | spi3.PCS1 | isi.D[1] | lcdif.D[3] | spi7.SCK | uart6.RTS_B | i2c7.SCL | |
| J1.19 | | gpio2.IO[6] | tpm5.CH0 | pdm.BIT_STREAM[1] | lcdif.D[2] | spi7.SOUT | uart6.CTS_B | i2c7.SDA | |
| J1.28 | | ccmsrcgpcmix.CLK03 | | | | | gpio4.IO[28] | | |
| J1.74 | | usdhc2.CD_B | enet_qos.1588_EVENT0_IN | i3c2.SCL | i2c1.SCL | | gpio3.IO[0] | | sai3.TX_SYNC |
| J1.78 | | usdhc2.DATA2 | enet2.1588_EVENT1_OUT | mqs2.RIGHT | uart2.TX | | gpio3.IO[5] | | |
| J1.80 | | usdhc2.DATA1 | enet2.1588_EVENT1_IN | can2.RX | uart1.RX | | gpio3.IO[4] | | |

DART-MX91 SYSTEM ON MODULE

| Pin | Assy | Alt0 | Alt1 | Alt2 | Alt3 | Alt4 | Alt5 | Alt6 | Alt7 |
|-------|--------|------------------|--------------------------|--------------|-------------|--------------|--------------|--------------|------|
| J1.82 | | usdhc2.CLK | enet_qos.1588_EVENT0_OUT | i3c2.SDA | i2c1.SDA | | gpio3.IO[1] | | |
| J1.84 | | usdhc2.DATA3 | lptmr2.ALT1 | mqs2.LEFT | uart2.RX | | gpio3.IO[6] | | |
| J1.86 | | usdhc2.DATA0 | enet2.1588_EVENT0_OUT | can2.TX | uart1.TX | | gpio3.IO[3] | | |
| J1.88 | | usdhc2.CMD | enet2.1588_EVENT0_IN | i3c2.PUR | i3c2.PUR_B | | gpio3.IO[2] | | |
| J2.02 | Non-AC | sai1.RX_DATA[0] | sai1.MCLK | spi1.SOUT | uart2.DSR_B | mqs1.RIGHT | gpio1.IO[14] | | |
| J2.04 | Non-AC | sai1.TX_BCLK | uart2.CTS_B | spi1.SIN | uart1.DSR_B | can1.RX | gpio1.IO[12] | | |
| J2.06 | Non-AC | i2c2.SCL | i3c1.PUR | uart2.DCD_B | tpm2.CH2 | sai1.RX_SYNC | gpio1.IO[2] | i3c1.PUR_B | |
| J2.08 | Non-AC | i2c2.SDA | | uart2.RIN_B | tpm2.CH3 | sai1.RX_BCLK | gpio1.IO[3] | | |
| J2.10 | Non-AC | sai1.TX_SYNC | sai1.TX_DATA[1] | spi1.PCS0 | uart2.DTR_B | mqs1.LEFT | gpio1.IO[11] | | |
| J2.14 | Non-AC | sai1.TX_DATA[0] | uart2.RTS_B | spi1.SCK | uart1.DTR_B | can1.TX | gpio1.IO[13] | sai1.MCLK | |
| J2.16 | Non-AC | uart2.RX | uart1.CTS_B | spi2.SOUT | tpm1.CH2 | sai1.MCLK | gpio1.IO[6] | | |
| J2.20 | | dap.TDO_TRACESWO | mqs2.RIGHT | | can2.RX | | gpio3.IO[31] | uart5.TX | |
| J2.22 | | dap.TMS_SWDIO | | | | | gpio3.IO[29] | uart5.RTS_B | |
| J2.24 | | dap.TDI | mqs2.LEFT | | can2.TX | | gpio3.IO[28] | uart5.RX | |
| J2.25 | SDEX | usdhc2.RESET_B | lptmr2.ALT2 | | | | gpio3.IO[7] | | |
| J2.26 | | dap.TCLK_SWCLK | | | | | gpio3.IO[30] | uart5.CTS_B | |
| J2.27 | SDEX | enet2.MDIO | uart4.RIN_B | sai2.RX_BCLK | | | gpio4.IO[15] | gpio4.IO[15] | |
| J2.28 | | wdog1.WDOG_ANY | | | | | gpio1.IO[15] | | |
| J2.29 | SDEX | usdhc3.DATA3 | flexspi.A_DATA[3] | i2c4.SCL | | | gpio3.IO[25] | | |
| J2.30 | | i2c1.SDA | i3c1.SDA | uart1.RIN_B | tpm2.CH1 | | gpio1.IO[1] | | |
| J2.31 | SDEX | usdhc3.DATA2 | flexspi.A_DATA[2] | i2c4.SDA | | | gpio3.IO[24] | | |
| J2.32 | | i2c1.SCL | i3c1.SCL | uart1.DCD_B | tpm2.CH0 | | gpio1.IO[0] | | |
| J2.33 | SDEX | usdhc3.DATA1 | flexspi.A_DATA[1] | uart2.RTS_B | | | gpio3.IO[23] | | |

DART-MX91 SYSTEM ON MODULE

| Pin | Assy | Alt0 | Alt1 | Alt2 | Alt3 | Alt4 | Alt5 | Alt6 | Alt7 |
|-------|------|--------------------|-------------------|-------------------|-------------|-------------|----------------|-------------|-----------------|
| J2.34 | | gpio2.IO[19] | sai3.RX_SYNC | pdm.BIT_STREAM[3] | lcdif.D[15] | spi5.SIN | spi4.SIN | tpm6.CH2 | sai3.TX_DATA[0] |
| J2.35 | SDEX | usdhc3.DATA0 | flexspi.A_DATA[0] | uart2.CTS_B | | | gpio3.IO[22] | | |
| J2.36 | | gpio2.IO[20] | sai3.RX_DATA[0] | pdm.BIT_STREAM[0] | lcdif.D[16] | spi5.SOUT | spi4.SOUT | tpm3.CH1 | |
| J2.38 | | gpio2.IO[16] | sai3.TX_BCLK | pdm.BIT_STREAM[2] | lcdif.D[12] | uart3.CTS_B | spi4.PCS2 | uart4.CTS_B | |
| J2.40 | | gpio2.IO[18] | sai3.RX_BCLK | isi.D[9] | lcdif.D[14] | spi5.PCS0 | spi4.PCS0 | tpm5.CH2 | |
| J2.42 | | gpio2.IO[26] | usdhc3.DATA2 | pdm.BIT_STREAM[1] | lcdif.D[22] | tpm5.CH3 | dap.TDI | spi8.PCS1 | sai3.TX_SYNC |
| J2.43 | SDEX | usdhc3.CMD | flexspi.A_SS0_B | uart1.RTS_B | | | gpio3.IO[21] | | |
| J2.44 | | gpio2.IO[21] | sai3.TX_DATA[0] | pdm.CLK | lcdif.D[17] | spi5.SCK | spi4.SCK | tpm4.CH1 | sai3.RX_BCLK |
| J2.45 | SDEX | usdhc3.CLK | flexspi.A_SCLK | uart1.CTS_B | | | gpio3.IO[20] | | |
| J2.46 | | gpio2.IO[17] | sai3.MCLK | isi.D[8] | lcdif.D[13] | uart3.RTS_B | spi4.PCS1 | uart4.RTS_B | |
| J2.48 | | gpio2.IO[10] | spi3.SOUT | isi.D[4] | lcdif.D[6] | tpm4.EXTCLK | uart7.CTS_B | i2c8.SDA | |
| J2.50 | | pdm.CLK | mqs1.LEFT | | | lptmr1.ALT1 | gpio1.IO[8] | can1.TX | |
| J2.54 | | gpio2.IO[27] | usdhc3.DATA3 | can2.RX | lcdif.D[23] | tpm6.CH3 | dap.TMS_SWDIO | spi5.PCS1 | |
| J2.56 | | pdm.BIT_STREAM[0] | mqs1.RIGHT | spi1.PCS1 | tpm1.EXTCLK | lptmr1.ALT2 | gpio1.IO[9] | can1.RX | |
| J2.60 | | gpio2.IO[25] | usdhc3.DATA1 | can2.TX | lcdif.D[21] | tpm4.CH3 | dap.TCLK_SWCLK | spi7.PCS1 | |
| J2.64 | | enet2.RGMII_RX_CTL | uart4.DSR_B | sai2.TX_DATA[0] | | | gpio4.IO[22] | isi.D[5] | |
| J2.65 | | enet2.RGMII_RD0 | uart4.RX | | | | gpio4.IO[24] | isi.D[7] | |
| J2.66 | | enet2.RGMII_RD2 | uart4.CTS_B | sai2.MCLK | mqs2.RIGHT | | gpio4.IO[26] | isi.D[9] | |
| J2.67 | | enet2.RGMII_TD1 | uart4.RTS_B | | | | gpio4.IO[18] | isi.D[1] | |
| J2.68 | | enet2.RGMII_RD3 | spdif1.OUT | spdif1.IN | mqs2.LEFT | | gpio4.IO[27] | | |
| J2.69 | | enet2.RGMII_RD1 | spdif1.IN | | | | gpio4.IO[25] | isi.D[8] | |
| J2.70 | | enet2.RGMII_TD0 | uart4.TX | | | | gpio4.IO[19] | isi.D[2] | |
| J2.71 | | enet2.RGMII_TXC | enet2.TX_ER | sai2.TX_BCLK | | | gpio4.IO[21] | isi.D[4] | |

DART-MX91 SYSTEM ON MODULE

| Pin | Assy | Alt0 | Alt1 | Alt2 | Alt3 | Alt4 | Alt5 | Alt6 | Alt7 |
|-------|------|--------------------|--------------|-------------------|-------------|-------------|--------------|---------------------|--------------|
| J2.72 | | enet2.RGMII_RXC | enet2.RX_ER | | | | gpio4.IO[23] | isi.D[6] | |
| J2.73 | | enet2.RGMII_TD3 | | sai2.RX_DATA[0] | | | gpio4.IO[16] | isi.FRAME_VAL ID | |
| J2.74 | | enet2.RGMII_TX_CTL | uart4.DTR_B | sai2.TX_SYNC | | | gpio4.IO[20] | isi.D[3] | |
| J2.76 | | ccmsrcgpcmix.CLKO1 | | | | | gpio3.IO[26] | | |
| J2.77 | | gpio2.IO[15] | uart3.RX | isi.D[7] | lcdif.D[11] | spi8.SCK | uart8.RTS_B | uart4.RX | |
| J2.78 | | enet2.RGMII_TD2 | enet2.TX_CLK | | | | gpio4.IO[17] | isi.LINE_VALID | |
| J2.79 | | gpio2.IO[12] | tpm3.CH2 | pdm.BIT_STREAM[2] | lcdif.D[8] | spi8.PCS0 | uart8.TX | i2c8.SDA | sai3.RX_SYNC |
| J2.80 | | gpio2.IO[11] | spi3.SCK | isi.D[5] | lcdif.D[7] | tpm5.EXTCLK | uart7.RTS_B | i2c8.SCL | |
| J2.81 | | gpio2.IO[13] | tpm4.CH2 | pdm.BIT_STREAM[3] | lcdif.D[9] | spi8.SIN | uart8.RX | i2c8.SCL | |
| J2.83 | | gpio2.IO[14] | uart3.TX | isi.D[6] | lcdif.D[10] | spi8.SOUT | uart8.CTS_B | uart4.TX | |
| J2.85 | | gpio2.IO[5] | tpm4.CH0 | pdm.BIT_STREAM[0] | lcdif.D[1] | spi7.SIN | uart6.RX | i2c6.SCL | |
| J2.86 | | gpio2.IO[4] | tpm3.CH0 | pdm.CLK | lcdif.D[0] | spi7.PCS0 | uart6.TX | i2c6.SDA | |
| J2.87 | | gpio2.IO[9] | spi3.SIN | isi.D[3] | lcdif.D[5] | tpm3.EXTCLK | uart7.RX | i2c7.SCL | |
| J2.88 | | uart1.RX | seco.RX | spi2.SIN | tpm1.CH0 | | gpio1.IO[4] | | |
| J2.89 | | gpio2.IO[8] | spi3.PCS0 | isi.D[2] | lcdif.D[4] | tpm6.CH0 | uart7.TX | i2c7.SDA | |
| J2.90 | | uart1.TX | seco.TX | spi2.PCS0 | tpm1.CH1 | | gpio1.IO[5] | | |
| J3.30 | | gpio2.IO[0] | | isi.PCLK | lcdif.PCLK | spi6.PCS0 | uart5.TX | i2c5.SDA | |
| J3.38 | | gpio2.IO[2] | i2c4.SDA | isi.FRAME_VALID | lcdif.VSYNC | spi6.SOUT | uart5.CTS_B | i2c6.SDA | |
| J3.42 | | gpio2.IO[22] | usdhc3.CLK | spdif1.IN | lcdif.D[18] | tpm5.CH1 | tpm6.EXTCLK | i2c5.SDA | |
| J3.46 | | gpio2.IO[23] | usdhc3.CMD | spdif1.OUT | lcdif.D[19] | tpm6.CH1 | | i2c5.SCL | |
| J3.48 | | ccmsrcgpcmix.CLKO2 | | | | | gpio3.IO[27] | | |
| J3.50 | | gpio2.IO[1] | | isi.D[0] | lcdif.DE | spi6.SIN | uart5.RX | i2c5.SCL | |
| J3.52 | | ccmsrcgpcmix.CLKO4 | | | | | gpio4.IO[29] | | |

DART-MX91 SYSTEM ON MODULE

| Pin | Assy | Alt0 | Alt1 | Alt2 | Alt3 | Alt4 | Alt5 | Alt6 | Alt7 |
|-------|------|-------------------|--------------|----------------|-------------|-------------|------------------|---------------------------|------|
| J3.58 | | gpio2.IO[3] | i2c4.SCL | isi.LINE_VALID | lcdif.HSYNC | spi6.SCK | uart5.RTS_B | i2c6.SCL | |
| J3.62 | | pdm.BIT_STREAM[1] | m33.NMI | spi2.PCS1 | tpm2.EXTCLK | lptmr1.ALT3 | gpio1.IO[10] | ccmsrcgpcmix. EXT_CLK1 | |
| J3.64 | | gpio2.IO[24] | usdhc3.DATA0 | | lcdif.D[20] | tpm3.CH3 | dap.TDO_TRACESWO | spi6.PCS1 | |

Note [1]: *The UART5 interface is utilized internally for Bluetooth communication.
To use UART5 externally, Bluetooth must be turned off, or a Non-WBD/WBE SOM should be employed.*

Note [2]: *The USDHC3 interface is utilized internally for Wi-Fi communication.
To use USDHC3 externally, Wi-Fi must be turned off, or a Non-WBD/WBE SOM should be employed.*

Note [3]: *The SAI1 interface is utilized internally for Codec communication.
To use SAI1 externally, Codec should be disabled in device tree, or a Non-AC SOM should be employed*

Note [4]: *The ENET_QOS.MDIO bus is used internally for Ethernet PHY communication.
When the EC SOM is employed, the functionality of these pins cannot be changed.
The signals are routed through a bidirectional voltage translator and have 1.47KΩ pull-ups, which may limit the bandwidth.*

8. SOM's Interfaces

8.1 Trace Impedance

SOM traces are designed with the below table impedance list per signal group. Table is a reference when you are updating or creating constraints in the PCB design tool to set up the impedances/trace widths.

Table 4: SOM Signal Group Traces Impedance

| Signal Group | Impedance |
|------------------------------|---------------------------|
| All single ended signals | 50 Ω Single ended |
| USB Differential signals | 90 Ω Differential |
| Ethernet Differential signal | 100 Ω Differential |

8.2 Display Interfaces

The i.MX 91 SoC features an LCDIF for RGB Parallel Display up to 1366x768p60 or 1280x800p60.

8.2.1 LCDIF

The LCD Interface (LCDIF) is a system master that fetches graphics stored in memory and displays them on a TFT LCD panel.

8.2.1.1 LCDIF Signals

Table 5: LCDIF Signals

| Pin# | Assy | Pin Function | Alt# | Notes | Ball |
|-------|------|--------------|------|-------|---------|
| J3.50 | | lcdif.DE | 3 | | SOC.L17 |
| J2.86 | | lcdif.D[0] | 3 | | SOC.P20 |
| J2.83 | | lcdif.D[10] | 3 | | SOC.L18 |
| J2.77 | | lcdif.D[11] | 3 | | SOC.P21 |
| J2.38 | | lcdif.D[12] | 3 | | SOC.R21 |
| J2.46 | | lcdif.D[13] | 3 | | SOC.R20 |
| J2.40 | | lcdif.D[14] | 3 | | SOC.R18 |
| J2.34 | | lcdif.D[15] | 3 | | SOC.R17 |
| J2.36 | | lcdif.D[16] | 3 | | SOC.T20 |
| J2.44 | | lcdif.D[17] | 3 | | SOC.T21 |
| J3.42 | | lcdif.D[18] | 3 | | SOC.U18 |
| J3.46 | | lcdif.D[19] | 3 | | SOC.U20 |
| J2.85 | | lcdif.D[1] | 3 | | SOC.L20 |
| J3.64 | | lcdif.D[20] | 3 | | SOC.U21 |
| J2.60 | | lcdif.D[21] | 3 | | SOC.V21 |
| J2.42 | | lcdif.D[22] | 3 | | SOC.V20 |
| J2.54 | | lcdif.D[23] | 3 | | SOC.W21 |
| J1.19 | | lcdif.D[2] | 3 | | SOC.L21 |
| J1.17 | | lcdif.D[3] | 3 | | SOC.M20 |
| J2.89 | | lcdif.D[4] | 3 | | SOC.M21 |
| J2.87 | | lcdif.D[5] | 3 | | SOC.N17 |
| J2.48 | | lcdif.D[6] | 3 | | SOC.N18 |
| J2.80 | | lcdif.D[7] | 3 | | SOC.N20 |
| J2.79 | | lcdif.D[8] | 3 | | SOC.N21 |
| J2.81 | | lcdif.D[9] | 3 | | SOC.J20 |
| J3.58 | | lcdif.HSYNC | 3 | | SOC.K21 |
| J3.30 | | lcdif.PCLK | 3 | | SOC.J21 |
| J3.38 | | lcdif.VSYNC | 3 | | SOC.K20 |

8.2.2 ISI - Image Sensing Interface

The ISI module interfaces to a pixel link source to obtain the image data for processing in its pipeline channel. The pipeline processes the image line from a configured source and performs one or more functions that are configured by software, such as down scaling, color space conversion, de-interlacing, alpha insertion, and cropping and rotation (horizontal and vertical). The processed image is stored into programmable memory locations.

The ISI module implements limited flow control mechanism to control output from its internal buffer flushing or sourcing an image ROM memory. Depending on the format type, the ISI is capable of processing and storing one line of pixels from the incoming

The key features of the ISI include:

- Up to 2K resolution at 30 or 60 fps (24bpp) on each channel.
- Input sources:
 - 1 pixel link interface that can interface to 1 camera sensor.
 - System memory (AXI master, internally converted to pixel link interface).
- Each processing pipeline or channel can be assigned to the same or different pixel input source.
- Stream multiplexing
 - Simple de-interlacing methods supported for interlaced input sources:
 - Weaving
- Stream manipulation
 - Supported pixel formats of images to be stored into memory
 - RAW8, RAW10, RAW12, RAW14, RAW16, RAW32
 - RGB888, BGR888, RGB565, RGB 10-bit, BGR 10-bit
 - YUV444, YUV422, YUV420 (8-bit, 10-bit, 12-bit) in planar or semi-planar formats
 - More formats listed in the description of FORMAT field in the channel's IMG_CTRL register
 - Downscaling of input image via decimation and bilinear filtering
 - Decimation by 2, 4, or 8 supported
 - Bilinear filter further downscales by 1.0 to 2.0 (fractional downscaling)
 - Color Space Conversion (CSC)
 - RGB, YUV, YCbCr
 - User defined color space matrix-based conversion
 - Alpha channel insertion for RGB formats
 - Global alpha value
 - Separate rectangular region of interest (ROI) alpha value. ROI alpha value has higher priority than global alpha value.
 - Up to 4 ROI non-overlapping rectangles supported
 - Mirroring (Image flip): Horizontal and vertical flipping supported.
 - Frame awareness and frame skipping
 - Clean frame start and shutdown based on HSYNC and VSYNC
 - Buffer overrun protection
 - Buffer underrun deterministic behavior
- Stream output options
 - Output to memory
 - Input source is converted to and processed by the processing pipeline as YUV444 or RGB.

- Processed images are outputted from pipeline and stored into memory location specified by software.
- Full line storage is available at processing channel output before outputting data to AXI. This storage can automatically split or combine depending on the output format being used.
- Dual buffered addresses are used in ping pong fashion with active buffer status indication.
- Line and frame stored interrupt status are used for software to track progress of frame.
- Flow control
 - Panic indication is used for software and device to increase priority of its write transactions to avoid potential overflow in output buffers. Software can configure thresholds for panic indication.
 - When pixels are sourced from memory or input line buffers are flushed, software can select to program the rate at which pixels are sent out. By default, one pixel is sent out per clock.
 - Back pressure mechanism is used to stall the channel pipeline during line buffer flushing and sourcing image from memory when AXI bus is unable accept data and the output buffers are low on storage.
- Metadata processing
 - The embedded data from the sensor can be processed and written out.

8.2.2.1 ISI Signals

Table 6: ISI Signals

| Pin# | Assy | Pin Function | Alt# | Notes | Ball |
|-------|------|-----------------|------|--|---------|
| J3.50 | | isi.D[0] | 2 | | SOC.J20 |
| J2.67 | | isi.D[1] | 6 | Runs @ 1.8V. | SOC.U8 |
| J1.17 | | isi.D[1] | 2 | | SOC.L21 |
| J2.70 | | isi.D[2] | 6 | Runs @ 1.8V. | SOC.T8 |
| J2.89 | | isi.D[2] | 2 | | SOC.M20 |
| J2.74 | | isi.D[3] | 6 | Runs @ 1.8V. | SOC.V6 |
| J2.87 | | isi.D[3] | 2 | | SOC.M21 |
| J2.48 | | isi.D[4] | 2 | | SOC.N17 |
| J2.71 | | isi.D[4] | 6 | Runs @ 1.8V. | SOC.U6 |
| J2.64 | | isi.D[5] | 6 | Runs @ 1.8V. | SOC.Y4 |
| J2.80 | | isi.D[5] | 2 | | SOC.N18 |
| J2.83 | | isi.D[6] | 2 | | SOC.P20 |
| J2.72 | | isi.D[6] | 6 | Runs @ 1.8V. | SOC.AA3 |
| J2.65 | | isi.D[7] | 6 | Runs @ 1.8V. | SOC.AA4 |
| J2.77 | | isi.D[7] | 2 | | SOC.P21 |
| J2.46 | | isi.D[8] | 2 | | SOC.R20 |
| J2.69 | | isi.D[8] | 6 | Runs @ 1.8V. | SOC.Y5 |
| J2.66 | | isi.D[9] | 6 | Runs @ 1.8V. | SOC.AA5 |
| J2.40 | | isi.D[9] | 2 | | SOC.R18 |
| J3.38 | | isi.FRAME_VALID | 2 | | SOC.K20 |
| J2.73 | | isi.FRAME_VALID | 6 | Runs @ 1.8V. | SOC.T10 |
| J3.58 | | isi.LINE_VALID | 2 | | SOC.K21 |
| J2.78 | | isi.LINE_VALID | 6 | Runs @ 1.8V. Internal buffer connected to this pin. It drives BOOT_MODE0, latched with POR_B rise. | SOC.V8 |
| J3.30 | | isi.PCLK | 2 | | SOC.J21 |

8.3 Ethernet Interface

The i.MX 91 SOC implements Two Ethernet controllers capable of simultaneous operation. One 1G-bit Ethernet with AVB support (ENET) plus a separate 1Gbit Ethernet QoS with TSN support.

ENET_QOS (Ethernet Quality of Service) - Gigabit Ethernet controller based on Synopsys Proprietary with support for TSN (time-sensitive networking) in addition to EEE, Ethernet AVB, and IEEE 1588

ENET1 - Gigabit Ethernet controller with support for Energy Efficient Ethernet (EEE), Ethernet AVB (Audio Video Bridging, IEEE 802.1Qav), and IEEE 1588 time-stamping module which provides accurate clock synchronization for distributed control nodes for industrial automation applications.

8.3.1 ENET_QOS (Ethernet Quality of Service)

The SOM can be ordered in one of the following configurations:

- **“EC” configuration** – The DART-MX91 includes an on SOM a Gigabit PHY (MaxLinear MxL86110) connected to ENET_QOS RGMII interface signals. External connectors and magnetics should be implemented on the carrier board to complete the interface to the media.
- **“no EC” configuration** – The DART-MX91 exposes the ENET_QOS RGMII/RMII interface signals to the SO-DIMM connector and ENET_QOS pins are referenced to 1.8V.

8.3.1.1 Ethernet PHY

The SOM MaxLinear MxL86110x Gigabit PHY, in conjunction with external magnetics on the carrier board, completes the interface to the media.

The following external gigabit magnetics are required to complete the Ethernet PHY interface for the media.

Table 7: Gigabit Ethernet Magnetics

| Vendor | P/N | Package | Cores | Configuration |
|--------|-------------|-----------------|-------|---------------|
| Pulse | H5007NL | Transformer | 8 | Auto-MDX |
| TDK | TLA-7T101LF | Transformer | 8 | Auto-MDX |
| Pulse | J0G-0009NL | Integrated RJ45 | 8 | Auto-MDX |

Table 8: Ethernet PHY Signals

| Pin# | Assy | Pin Function | Alt# | Notes | Ball |
|-------|------|---------------|------|---------------------------------|--------------|
| J1.2 | EC | ETH0_MDI_B_P | 0 | Differential Pair Positive side | MxL86110x.4 |
| J1.4 | EC | ETH0_MDI_B_M | 0 | Differential Pair Negative side | MxL86110x.5 |
| J1.6 | EC | ETH0_MDI_A_M | 0 | Differential Pair Negative side | MxL86110x.2 |
| J1.7 | EC | ETH0_LED_LINK | 0 | Runs @ 3.3V. Active High. | MxL86110x.33 |
| J1.8 | EC | ETH0_MDI_A_P | 0 | Differential Pair Positive side | MxL86110x.1 |
| J1.9 | EC | ETH0_LED_ACT | 0 | Runs @ 3.3V. Active High. | MxL86110x.34 |
| J1.10 | EC | ETH0_MDI_C_P | 0 | Differential Pair Positive side | MxL86110x.6 |
| J1.12 | EC | ETH0_MDI_C_M | 0 | Differential Pair Negative side | MxL86110x.7 |
| J1.14 | EC | ETH0_MDI_D_P | 0 | Differential Pair Positive side | MxL86110x.9 |
| J1.16 | EC | ETH0_MDI_D_M | 0 | Differential Pair Negative side | MxL86110x.10 |
| J2.82 | EC | ETH_INT | 0 | Runs @ 1.8V. | MxL86110x.31 |

Table 9: MxL86110x Ethernet PHY LED Behavior

| Symbol | 10M link | 10M active | 100M link | 100M active | 1000M link | 1000M active |
|-----------------------------|----------|------------|-----------|-------------|------------|--------------|
| LED_10_100_1000 | ON | ON | ON | ON | ON | ON |
| LED_ACT | OFF | BLINK | OFF | BLINK | OFF | BLINK |
| ON = active; OFF = inactive | | | | | | |

8.3.1.2 ENET_QOS Signals

Table 10: ENET_QOS RMII/RGMII Signals

| Pin# | Assy | Pin Function | Alt# | Notes | Ball |
|-------|--------|---|------|--|----------|
| J1.74 | | enet_qos.1588_EVENT0_IN | 1 | Will change level according to J1.90 NVCC_SD. | SOC.Y17 |
| J1.82 | | enet_qos.1588_EVENT0_OUT | 1 | Will change level according to J1.90 NVCC_SD. | SOC.AA19 |
| J1.13 | | enet_qos.MDC | 0 | Runs @ 3.3V. Routed through PMIC internal voltage translator. Has an internal 1.47K pull up. | SOC.AA11 |
| J1.11 | | enet_qos.MDIO | 0 | Runs @ 3.3V. Routed through PMIC internal voltage translator. Has an internal 1.47K pull up. | SOC.AA10 |
| J1.10 | Non-EC | enet_qos.RGMII_RD0 | 0 | Runs @ 1.8V. | SOC.AA8 |
| J1.12 | Non-EC | enet_qos.RGMII_RD1 | 0 | Runs @ 1.8V. | SOC.Y9 |
| J1.14 | Non-EC | enet_qos.RGMII_RD2 | 0 | Runs @ 1.8V. | SOC.AA9 |
| J1.16 | Non-EC | enet_qos.RGMII_RD3 | 0 | Runs @ 1.8V. | SOC.Y10 |
| J1.9 | Non-EC | enet_qos.RGMII_RX_CTL | 0 | Runs @ 1.8V. | SOC.Y8 |
| J1.7 | Non-EC | enet_qos.RGMII_RXC | 0 | Runs @ 1.8V. Has EMI filter. | SOC.AA7 |
| J1.4 | Non-EC | enet_qos.RGMII_TD0 | 0 | Runs @ 1.8V. | SOC.W11 |
| J1.2 | Non-EC | enet_qos.RGMII_TD1 | 0 | Runs @ 1.8V. | SOC.T12 |
| J1.6 | Non-EC | enet_qos.RGMII_TD2 | 0 | Runs @ 1.8V. | SOC.U12 |
| J1.8 | Non-EC | enet_qos.RGMII_TD3 | 0 | Runs @ 1.8V. | SOC.V12 |
| J1.3 | Non-EC | enet_qos.RGMII_TX_CTL | 0 | Runs @ 1.8V. | SOC.V10 |
| J1.5 | Non-EC | enet_qos.RGMII_TXC | 0 | Runs @ 1.8V. | SOC.U10 |
| J1.7 | Non-EC | enet_qos.RX_ER | 1 | Runs @ 1.8V. Has EMI filter. | SOC.AA7 |
| J1.5 | Non-EC | enet_qos.TX_ER | 1 | Runs @ 1.8V. | SOC.U10 |
| J1.6 | Non-EC | INPUT=enet_qos.TX_CLK OUTPUT=ENET_CLK_ROOT | 1 | Runs @ 1.8V. | SOC.U12 |

8.3.2 ENET2

ENET2 RGMII/RMII interface signals are always exported through SO-DIMM connector. Signals, in conjunction to MDIO signals exported from SO-DIMM connector, they can be used to interface an external Ethernet PHY.

ENET2 pins are referenced to 1.8V.

8.3.2.1 ENET2 Signals

Table 11: ENET2 RMII/RGMII Signals

| Pin# | Assy | Pin Function | Alt# | Notes | Ball |
|-------|------|--|------|---|----------|
| J1.88 | | enet2.1588_EVENT0_IN | 1 | Will change level according to J1.90 NVCC_SD. | SOC.Y19 |
| J1.86 | | enet2.1588_EVENT0_OUT | 1 | Will change level according to J1.90 NVCC_SD. | SOC.Y18 |
| J1.80 | | enet2.1588_EVENT1_IN | 1 | Will change level according to J1.90 NVCC_SD. | SOC.AA18 |
| J1.78 | | enet2.1588_EVENT1_OUT | 1 | Will change level according to J1.90 NVCC_SD. | SOC.Y20 |
| J2.27 | SDEX | enet2.MDIO | 0 | Runs @ 1.8V. | SOC.AA6 |
| J2.65 | | enet2.RGMII_RD0 | 0 | Runs @ 1.8V. | SOC.AA4 |
| J2.69 | | enet2.RGMII_RD1 | 0 | Runs @ 1.8V. | SOC.Y5 |
| J2.66 | | enet2.RGMII_RD2 | 0 | Runs @ 1.8V. | SOC.AA5 |
| J2.68 | | enet2.RGMII_RD3 | 0 | Runs @ 1.8V. | SOC.Y6 |
| J2.64 | | enet2.RGMII_RX_CTL | 0 | Runs @ 1.8V. | SOC.Y4 |
| J2.72 | | enet2.RGMII_RXC | 0 | Runs @ 1.8V. | SOC.AA3 |
| J2.70 | | enet2.RGMII_TD0 | 0 | Runs @ 1.8V. | SOC.T8 |
| J2.67 | | enet2.RGMII_TD1 | 0 | Runs @ 1.8V. | SOC.U8 |
| J2.78 | | enet2.RGMII_TD2 | 0 | Runs @ 1.8V. The internal buffer connected to this pin drives BOOT_MODE0 (J2.90), latched with POR_B rise. | SOC.V8 |
| J2.73 | | enet2.RGMII_TD3 | 0 | Runs @ 1.8V. | SOC.T10 |
| J2.74 | | enet2.RGMII_TX_CTL | 0 | Runs @ 1.8V. | SOC.V6 |
| J2.71 | | enet2.RGMII_TXC | 0 | Runs @ 1.8V. | SOC.U6 |
| J2.72 | | enet2.RX_ER | 1 | Runs @ 1.8V. | SOC.AA3 |
| J2.71 | | enet2.TX_ER | 1 | Runs @ 1.8V. | SOC.U6 |
| J2.78 | | IN=enet2.TX_CLK OUT=ENET_REF_CLK_ROOT | 1 | Runs @ 1.8V. The internal buffer connected to this pin drives BOOT_MODE0 (J2.90), latched with POR_B rise. | SOC.V8 |

8.4 Wi-Fi, BT, 802.15.4

The DART-MX91 contains a certified high-performance Wi-Fi, Bluetooth, 802.15.4 module:

- Wi-Fi® 802.11a/b/g/n/ac/ax
- Bluetooth® 5.4 BR/EDR/LE
- 802.15.4
- Modules have an antenna connection through a 50Ω U. FL JACK connector

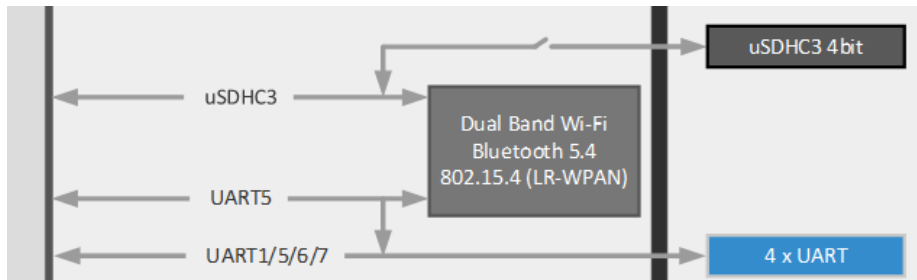


Figure 3: DART-MX91 Wi-Fi Module Internal Connection

8.4.1 Interface Implementation Options

8.4.1.1 Module Configuration with “WBD” Option

- System use: **Wi-Fi and Bluetooth.**
 - BT UART external interface pins should be left floating.
- System use: **Wi-Fi and no BT.**
 - In this case, disable the BT module (using GPIO4.IO[15]).
 - BT UART interface pins can be used externally with any of the alternate functions.
- System use: **BT and no Wi-Fi.**
 - Disable Wi-Fi function.
 - Enable the BT module (using GPIO4.IO[15]).

8.4.1.2 Module Configuration with “WBE” Option

- System use: **Wi-Fi and Bluetooth and 802.15.4.**
 - BT UART external interface pins should be left floating.
 - TP SPI pins can be used in SPI mode only
- System use: **Wi-Fi and no BT no 802.15.4.**
 - In this case, disable the BT and 802.15.4 module (using GPIO4.IO[15]).
 - BT UART and TP SPI interface pins can be used externally with any of the alternate functions.
- System use: **BT and 802.15.4 and no Wi-Fi.**
 - Disable Wi-Fi function.
 - Enable the BT and 802.15.4 module (using GPIO4.IO[15]).

8.4.1.3 Module Configuration without “WBD” or “WBE” Option

- System use: **no Wi-Fi and no BT.**
 - BT UART interface accessible externally with any of its alternative functions.
 - SD3 interface accessible externally with any of its alternative functions.
SD3 is working at 1.8V levels

8.4.2 Bluetooth Interface Signals

Table 12: BT UART Interface Signals

| Pin# | Assy | Pin Function | Alt# | Notes | Ball |
|-------|------|--------------|------|---|--------|
| J2.26 | | uart5.CTS_B | 6 | Runs @ 1.8V. Used internally with "WBD" or "WBE" Function can be released if BT Function disabled Always exposed | SOC.Y1 |
| J2.22 | | uart5.RTS_B | 6 | Runs @ 1.8V. Used internally with "WBD" or "WBE" Function can be released if BT Function disabled Always exposed | SOC.W2 |
| J2.24 | | uart5.RX | 6 | Runs @ 1.8V. Used internally with "WBD" or "WBE" Function can be released if BT Function disabled Always exposed | SOC.W1 |
| J2.20 | | uart5.TX | 6 | Runs @ 1.8V. Used internally with "WBD" or "WBE" Function can be released if BT Function disabled Always exposed | SOC.Y2 |

8.4.3 Wakeup signals

The DART-MX91 exposes Wi-Fi and BT wakeup signals of the modules on the SOM. The voltage levels of the signals are 1.8V.

The purpose of these signals is to be connected externally to some GPIO lines and use as a wakeup source for the main CPU.

For implementation, please check out the Wi-Fi module datasheet.

Table 13: Wakeup Signals

| Pin# | Assy | Pin Function | Alt# | Notes | Ball |
|-------|---------|----------------|------|--------------|---------------|
| J1.25 | WBD/WBE | WIFI_HOST_WAKE | | Runs @ 1.8V. | LBES5PL2xL.73 |
| J1.32 | WBD/WBE | BT_DEV_WAKE | | Runs @ 1.8V. | LBES5PL2xL.75 |
| J1.23 | WBD/WBE | BT_HOST_WAKE | | Runs @ 1.8V. | LBES5PL2xL.76 |

8.5 Ultra-Secured Digital Host Controller

The DART-MX91 exposes the uSDHC2 controller 4-bit interface for supporting interface between the host system and the SD/SDIO/MMC cards.

Key features of uSDHC2:

- SD/SDIO standard, up to version 3.0.
- compliance with 200 MHz SDR signaling to support up to 100 MB/sec
- 1.8 V and 3.3 V operation
- Support for SDXC (extended capacity)

8.5.1 uSDHC1 Signals

uSDHC controller, uSDHC1, is used internally for the eMMC storage chip on the SOM.

8.5.2 uSDHC2 Signals

uSDHC2 pins are referenced to LDO5 power supply of the PMIC.

By default, this LDO supplies 3.3V to allow proper boot from SD Card.

The system uses SD2_VSELECT pin to switch between 3.3V and 1.8V.

This pin functionality can be changed to GPIO3.IO[19] and controlled programmatically.

It is also possible to control the voltage of the LDO by I2C commands.

- Low state will select 3.3V interface
- High state will select 1.8V interface

Table 14: uSDHC2 Signals

| Pin# | Assy | Pin Function | Alt# | Notes | Ball |
|-------|------|----------------|------|---|----------|
| J1.74 | | usdhc2.CD_B | 0 | External SD card detect input. Add 10K external pull up to J1.90. Will change level according to J1.90 NVCC_SD. | SOC.Y17 |
| J1.82 | | usdhc2.CLK | 0 | Will change level according to J1.90 NVCC_SD. | SOC.AA19 |
| J1.88 | | usdhc2.CMD | 0 | Will change level according to J1.90 NVCC_SD. | SOC.Y19 |
| J1.86 | | usdhc2.DATA0 | 0 | Will change level according to J1.90 NVCC_SD. | SOC.Y18 |
| J1.80 | | usdhc2.DATA1 | 0 | Will change level according to J1.90 NVCC_SD. | SOC.AA18 |
| J1.78 | | usdhc2.DATA2 | 0 | Will change level according to J1.90 NVCC_SD. | SOC.Y20 |
| J1.84 | | usdhc2.DATA3 | 0 | Will change level according to J1.90 NVCC_SD. | SOC.AA20 |
| J2.25 | SDEX | usdhc2.RESET_B | 0 | Runs @ J1.90 VDD_SDIO2 level. | SOC.AA17 |

8.5.3 uSDHC3 Signals

The uSDHC3 controller serves as the internal interface for Wi-Fi connectivity on the System on Module (SOM). It can be utilized in scenarios where the Wi-Fi module is not installed, through two distinct pin configurations. One configuration operates at a voltage level of 3.3V, while the alternative operates at 1.8V. The 3.3V pin group is consistently accessible; however, it is important to note that the uSDHC3 functionality cannot be employed simultaneously with the Wi-Fi interface. The 1.8V pin group is only available on SOMs that do not have the Wi-Fi module integrated.

Table 15: uSDHC3 Signals

| Pin# | Assy | Pin Function | Alt# | Notes | Ball |
|-------|------|--------------|------|---|---------|
| J2.45 | SDEX | usdhc3.CLK | 0 | Runs @ 1.8V. | SOC.V16 |
| J3.42 | | usdhc3.CLK | 1 | Runs @ 3.3V. Cannot be used if the Wi-Fi module is active. | SOC.U18 |
| J2.43 | SDEX | usdhc3.CMD | 0 | Runs @ 1.8V. | SOC.U16 |
| J3.46 | | usdhc3.CMD | 1 | Runs @ 3.3V. Cannot be used if the Wi-Fi module is active. | SOC.U20 |
| J2.35 | SDEX | usdhc3.DATA0 | 0 | Runs @ 1.8V. | SOC.T16 |
| J3.64 | | usdhc3.DATA0 | 1 | Runs @ 3.3V. Cannot be used if the Wi-Fi module is active. | SOC.U21 |
| J2.33 | SDEX | usdhc3.DATA1 | 0 | Runs @ 1.8V. | SOC.V14 |
| J2.60 | | usdhc3.DATA1 | 1 | Runs @ 3.3V. Cannot be used if the Wi-Fi module is active. | SOC.V21 |
| J2.31 | SDEX | usdhc3.DATA2 | 0 | Runs @ 1.8V. | SOC.U14 |
| J2.42 | | usdhc3.DATA2 | 1 | Runs @ 3.3V. Cannot be used if the Wi-Fi module is active. | SOC.V20 |
| J2.29 | SDEX | usdhc3.DATA3 | 0 | Runs @ 1.8V. | SOC.T14 |
| J2.54 | | usdhc3.DATA3 | 1 | Runs @ 3.3V. Cannot be used if the Wi-Fi module is active. | SOC.W21 |

8.6 USB 2.0

The DART-MX91 features dual USB controllers and PHYs that are compliant with USB 2.0 standards.

8.6.1 USB Port1 Interface Signals

Table 16: USB 3.0/2.0 Port 1 Interface signals

| Pin# | Assy | Pin Function | Alt # | Notes | Ball |
|-------|--------|--------------|-------|--|----------|
| J1.13 | | usb1.OTG_ID | 3 | Runs @ 3.3V. Routed through PMIC internal voltage translator. It has an internal 1.47K pull-up. It is not recommended to use a native USB_ID. General GPIO usage is recommended. | SOC.AA11 |
| J1.2 | Non-EC | usb1.OTG_OC | 3 | Runs @ 1.8V. | SOC.T12 |
| J1.11 | | usb1.OTG_PWR | 3 | Runs @ 3.3V. Routed through PMIC internal voltage translator. Has an internal 1.47K pull up. | SOC.AA10 |
| J3.67 | | USB1_D_N | 0 | Differential Pair Negative side | SOC.A14 |
| J3.65 | | USB1_D_P | 0 | Differential Pair Positive side | SOC.B14 |
| J3.56 | | USB1_ID | 0 | Runs @ 1.8V. USB1 native ID analogue input. No GPIO function. It is not recommended to use a native USB_ID. General GPIO usage is recommended. | SOC.C11 |
| J3.66 | | USB1_VBUS | 0 | Runs @ 5.0V. VBUS detect input. | SOC.F12 |

Note: Usage of native USB_ID in i.MX91 requires patches not included in NXP formal release.

For simple OTG implementation, use a CC Logic chip and connect to GPIO.

See the EVK schematics for reference. USB1_ID can be left floating if not used.

8.6.2 USB Port2 Interface Signals

Table 17: USB 2.0 Port 2 Interface signals

| Pin# | Assy | Pin Function | Alt# | Notes | Ball |
|-------|--------|--------------|------|--|---------|
| J1.8 | Non-EC | usb2.OTG_ID | 3 | Runs @ 1.8V. It is not recommended to use a native USB_ID. General GPIO usage is recommended. | SOC.V12 |
| J1.6 | Non-EC | usb2.OTG_OC | 3 | Runs @ 1.8V. | SOC.U12 |
| J1.9 | Non-EC | usb2.OTG_PWR | 3 | Runs @ 1.8V. | SOC.Y8 |
| J3.49 | | USB2_D_N | 0 | | SOC.A15 |
| J3.47 | | USB2_D_P | 0 | | SOC.B15 |
| J3.44 | | USB2_ID | 0 | Runs @ 1.8V. USB2 native ID analogue input. No GPIO function. It is not recommended to use a native USB_ID. General GPIO usage is recommended. | SOC.E12 |
| J3.26 | | USB2_VBUS | 0 | Runs @ 5.0V. VBUS detect input. | SOC.E14 |

Note: Usage of native USB_ID in i.MX91 requires patches not included in NXP formal release.
For simple OTG implementation, use a CC Logic chip and connect to GPIO.
See the EVK schematics for reference. USB1_ID can be left floating if not used.

8.7 Audio

The DART-MX91 features the following audio interfaces:

- WM8904CGEFL Audio codec interfaces:
 - Analog outputs & inputs: stereo line-in & Stereo HP out.
 - Digital microphone input
- Five external SAI (synchronous audio interface) modules supporting I2S, AC97, TDM, codec/DSP and DSD interfaces:
 - SAI-1 supports to up to 16-channels TX (8 lanes) and 16-channels RX (8 lanes) at 768KHz/32-bit
 - SAI-2/5 supports to up to 8-channels TX (4 lanes) and 8-channels RX (4 lanes) at 768KHz/32-bit
 - SAI-3 supports up to 4-channels TX (2 lanes) and 4-channels RX (2 lanes) at 768KHz/32-bit
 - SAI-6 supports to up to 2-channels TX (1 lanes) and 2-channels RX (1 lanes) at 768KHz/32-bit when multiplexed on SAI1, or up to 384kHz/32-bit when multiplexed on Ethernet primary pins
 - SAI-7 supports to up to 2-channels TX (1 lanes) and 2-channels RX (1 lanes) at 384KHz/32-bit
- PDM supporting up to 8-channels (4 lanes)
- S/PDIF Input and Output, including a new Raw Capture input mode
- Hifi4 Audio DSP, operating up to 800 MHz

Analog audio signals are part of the SOM WM8904 audio codec, available with “AC” **Configuration** only. The codec interfaces the SoC via SAI3 lines, when not assembled, SoC balls are exported to SOM connector instead of Analog codec interface pins.

The Codec features stereo ground-referenced headphone amplifiers using the Wolfson ‘Class-W’ amplifier techniques -incorporating an innovative dual-mode charge pump architecture - to optimize efficiency and power consumption during playback. The ground-referenced headphone and line outputs eliminate AC coupling capacitors, and both outputs include common mode feedback paths to reject ground noise.

The following figure illustrates the connectivity for no large AC coupling capacitors implemented on SOM.

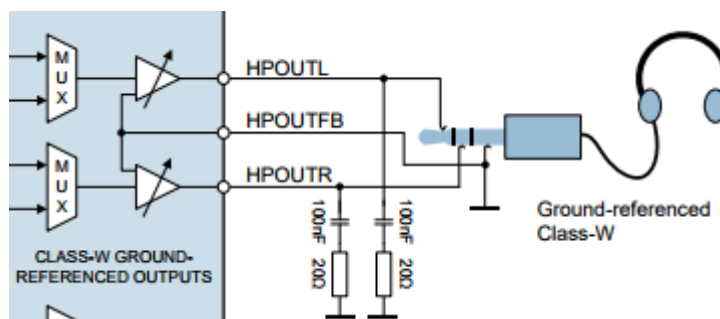


Figure 4: WM8904 Headphone connectivity

8.7.1 WM8904CGEFL Audio Codec

8.7.1.1 Audio Codec Signals

Table 18: Analog audio Signals

| Pin# | Assy | Pin Function | Alt# | Notes | Ball |
|-------|------|--------------|------|---|-----------|
| J2.12 | | AGND | 0 | | |
| J2.2 | AC | HPLOUT | 0 | 100nF and 20Ω Zobel network required. | WM8904.13 |
| J2.6 | AC | HPOUTFB | 0 | Headphone output ground loop noise rejection feedback. Should be connected to GND near the HP Connector. | WM8904.14 |
| J2.4 | AC | HPROUT | 0 | 100nF and 20Ω Zobel network required. | WM8904.15 |
| J2.14 | AC | DMIC_CLK | 0 | DMIC output. | WM8904.1 |
| J2.16 | AC | DMIC_DATA | 0 | Runs @ 1.8V. DMIC input. | WM8904.27 |
| J2.8 | AC | LINEIN1_LP | 0 | | WM8904.26 |
| J2.10 | AC | LINEIN1_RP | 0 | | WM8904.24 |

8.7.2 Serial Audio Interface

The SAI module provides a synchronous audio interface that supports full duplex serial interfaces with frame synchronization, such as I2S, AC97, TDM, and codec/DSP interfaces.

8.7.2.1 SAI Signals

Table 19: Serial Audio Interface Signals

| Pin# | Assy | Pin Function | Alt# | Notes | Ball |
|-------|--------|-----------------|------|---|---------|
| J2.2 | Non-AC | sai1.MCLK | 1 | | SOC.H20 |
| J2.14 | Non-AC | sai1.MCLK | 6 | BOOT_MODE3 pin. Has an internal SOC PD. Do not drive until after POR_B rise + 30ms. | SOC.H21 |
| J2.16 | Non-AC | sai1.MCLK | 4 | | SOC.F20 |
| J2.8 | Non-AC | sai1.RX_BCLK | 4 | | SOC.D21 |
| J2.2 | Non-AC | sai1.RX_DATA[0] | 0 | | SOC.H20 |
| J2.6 | Non-AC | sai1.RX_SYNC | 4 | | SOC.D20 |
| J2.4 | Non-AC | sai1.TX_BCLK | 0 | | SOC.G20 |
| J2.14 | Non-AC | sai1.TX_DATA[0] | 0 | BOOT_MODE3 pin. Has an internal SOC PD. Do not drive until after POR_B rise + 30ms. | SOC.H21 |
| J2.10 | Non-AC | sai1.TX_DATA[1] | 1 | BOOT_MODE2 pin. Has an internal SOC PD. Do not drive until after POR_B rise + 30ms | SOC.G21 |
| J2.10 | Non-AC | sai1.TX_SYNC | 0 | BOOT_MODE2 pin. Has an internal SOC PD. Do not drive until after POR_B rise + 30ms | SOC.G21 |
| J2.66 | | sai2.MCLK | 2 | Runs @ 1.8V. | SOC.AA5 |
| J2.27 | SDEX | sai2.RX_BCLK | 2 | Runs @ 1.8V. | SOC.AA6 |
| J2.73 | | sai2.RX_DATA[0] | 2 | Runs @ 1.8V. | SOC.T10 |
| J2.71 | | sai2.TX_BCLK | 2 | Runs @ 1.8V. | SOC.U6 |
| J2.64 | | sai2.TX_DATA[0] | 2 | Runs @ 1.8V. | SOC.Y4 |
| J2.74 | | sai2.TX_SYNC | 2 | Runs @ 1.8V. | SOC.V6 |
| J2.46 | | sai3.MCLK | 1 | | SOC.R20 |
| J2.40 | | sai3.RX_BCLK | 1 | | SOC.R18 |
| J2.44 | | sai3.RX_BCLK | 7 | | SOC.T21 |
| J2.36 | | sai3.RX_DATA[0] | 1 | | SOC.T20 |
| J2.34 | | sai3.RX_SYNC | 1 | | SOC.R17 |
| J2.79 | | sai3.RX_SYNC | 7 | | SOC.N20 |
| J2.38 | | sai3.TX_BCLK | 1 | | SOC.R21 |
| J2.44 | | sai3.TX_DATA[0] | 1 | | SOC.T21 |
| J2.34 | | sai3.TX_DATA[0] | 7 | | SOC.R17 |
| J1.74 | | sai3.TX_SYNC | 7 | External SD card detect input. Will change level according to J1.90 NVCC_SD. | SOC.Y17 |
| J2.42 | | sai3.TX_SYNC | 7 | | SOC.V20 |

8.7.3 PDM - Microphone Interface (MICFIL)

The PDM module of the i.MX91 SOC, provides a popular way to deliver audio from microphones to the processor in several applications, such as mobile telephones.

Up to 8 channels can be implemented with 4 lanes.

The PDM Microphone Interface module is composed of:

- A decimation filter by channel that:
 - Consists, internally, of a cascade integrator comb (CIC) filter, a DC remover, and half-band filters. The filtering results are stored in individual FIFOs (a FIFO per channel). These FIFOs have overflow and underflow detectors to deliver an error interrupt request.
 - Implements a low-pass filter in the audio band (20 Hz–20.0 kHz @48 kHz output sampling rate by default) with a configurable decimation rate. You can implement it using a series of CIC, half-band, and DC remover filters.
 - Stores its output into a FIFO buffer, and each FIFO is mapped to MICFIL Output Result (DATACH0 - DATACH7). It is possible to generate either an interrupt or a DMA request when, in each FIFO of all enabled channels, the number of data stored surpasses a configured watermark.
 - Independently on decimation filters, there is a Hardware Voice Activity Detector (HWVAD) which implements voice-detection algorithms to generate wake-up interrupts.
- A shared time generator unit that:
 - Delivers the PDM_CLK to all microphones that must operate at the same clock frequency. Each input interface receives a time multiplexed PDM bitstream from two PDM microphones and it separates audio information in two channels: left (0) and right (1). Every decimation filter, corresponding to its channel, does this processing.
 - Generates the PDM_CLK to the microphones. This clock is the same and is active for all the PDM microphones, which means, it is not possible to turn off the PDM_CLK only for one single microphone.
- An input interface for each pair of PDM microphones
- A FIFO by channel
- A shared DMA interface, interrupt interface, and bus interface
- A shared interface to the chip
- A Hardware Voice Activity Detector (HWVAD)

PDM block main features are:

- Decimation filters:
 - Fixed-point filtering
 - 24-bit PCM audio output
 - Internal clock divider for a programmable PDM clock generation
- Full or partial set of channel operations with individual enable controls
- Programmable decimation rate
- Programmable DC remover
- Programmable DC remover at output
- Range adjustment capability

- FIFOs with interrupt and DMA capability: each FIFO having a length of 32 entries
- HWVAD, equipped with:
 - Interrupt capability
 - Zero-Crossing Detection (ZCD) option

Table 20: PDM Interface Signals

| Pin# | Assy | Pin Function | Alt# | Notes | Ball |
|-------|------|-------------------|------|-------|---------|
| J2.36 | | pdm.BIT_STREAM[0] | 2 | | SOC.T20 |
| J2.56 | | pdm.BIT_STREAM[0] | 0 | | SOC.J17 |
| J2.85 | | pdm.BIT_STREAM[0] | 2 | | SOC.L18 |
| J1.19 | | pdm.BIT_STREAM[1] | 2 | | SOC.L20 |
| J2.42 | | pdm.BIT_STREAM[1] | 2 | | SOC.V20 |
| J3.62 | | pdm.BIT_STREAM[1] | 0 | | SOC.G18 |
| J2.38 | | pdm.BIT_STREAM[2] | 2 | | SOC.R21 |
| J2.79 | | pdm.BIT_STREAM[2] | 2 | | SOC.N20 |
| J2.34 | | pdm.BIT_STREAM[3] | 2 | | SOC.R17 |
| J2.81 | | pdm.BIT_STREAM[3] | 2 | | SOC.N21 |
| J2.44 | | pdm.CLK | 2 | | SOC.T21 |
| J2.50 | | pdm.CLK | 0 | | SOC.G17 |
| J2.86 | | pdm.CLK | 2 | | SOC.L17 |

8.7.4 MQS - Medium Quality Sound

Medium-quality sound (MQS) is used to generate medium-quality audio via a standard GPIO in the pin mux, allowing the user to connect stereo speakers or headphones to a power amplifier without an additional DAC chip.

Table 21: MQS Interface Signals

| Pin# | Assy | Pin Function | Alt# | Notes | Ball |
|-------|--------|--------------|------|---|----------|
| J2.10 | | mqs1.LEFT | 4 | BOOT_MODE2 pin. Has an internal SOC PD. Do not drive until after POR_B rise + 30ms | SOC.G21 |
| J2.50 | | mqs1.LEFT | 1 | | SOC.G17 |
| J2.2 | Non-AC | mqs1.RIGHT | 4 | | SOC.H20 |
| J2.56 | | mqs1.RIGHT | 1 | | SOC.J17 |
| J1.84 | | mqs2.LEFT | 2 | Will change level according to J1.90 NVCC_SD. | SOC.AA20 |
| J2.24 | | mqs2.LEFT | 1 | Runs @ 1.8V. Used on DART for BT communication. If BT not required internal buffer can be disabled, and pin function released to customer usage. | SOC.W1 |
| J2.68 | | mqs2.LEFT | 3 | Runs @ 1.8V. | SOC.Y6 |
| J1.78 | | mqs2.RIGHT | 2 | Will change level according to J1.90 NVCC_SD. | SOC.Y20 |
| J2.20 | | mqs2.RIGHT | 1 | Runs @ 1.8V. Used on DART for BT communication. If BT not required internal buffer can be disabled, and pin function released to customer usage. | SOC.Y2 |
| J2.66 | | mqs2.RIGHT | 3 | Runs @ 1.8V. | SOC.AA5 |

8.7.5 SPDIF – Sony Philips Digital Interface Format

A standard audio file transfer format, developed jointly by the Sony and Phillips corporations. It supports Transmitter and Receiver functionality including frequency measurement block that allows the precise measurement of an incoming sampling frequency.

The SPDIF receiver extracts the audio data from each SPDIF frame and places the data in the SPDIF Rx left and right FIFOs with Channel Status and User bits.

For the SPDIF transmitter, the audio data is provided by the processor dedicated registers along with Channel Status and User bits.

Table 22: SPDIF Interface Signals

| Pin# | Assy | Pin Function | Alt# | Notes | Ball |
|-------|------|--------------|------|--------------|---------|
| J2.68 | | spdif1.IN | 2 | Runs @ 1.8V. | SOC.Y6 |
| J2.69 | | spdif1.IN | 1 | Runs @ 1.8V. | SOC.Y5 |
| J3.42 | | spdif1.IN | 2 | | SOC.U18 |
| J2.68 | | spdif1.OUT | 1 | Runs @ 1.8V. | SOC.Y6 |
| J3.46 | | spdif1.OUT | 2 | | SOC.U20 |

8.8 LPUART

The DART-MX91 exposes up to seven LPUART interfaces some of which are multiplexed with other peripherals. UART5 is used on SOM for Bluetooth interface and can be accessible only if the BT is disabled or on SOM without **“WBD” and “WBE” Configuration**.

The LPUART includes the following features:

- Full-duplex, standard NRZ format
- Programmable baud rates (13-bit modulo divider) with a configurable oversampling ratio (OSR)
- Asynchronous operations of transmit and receive baud rates with respect to the bus clock:
 - Baud rate can be configured independently of the bus clock frequency.
 - Operation in Low-Power modes is supported.
- Interrupt, DMA, or polled operations:
 - Transmit data empty and transmission complete
 - Receive data full
 - Receive overrun, parity error, framing error, and noise error
 - Idle receiver detect
 - Active edge on receive pin
 - Break detect supporting LIN
 - Receive data match
- Hardware parity generation and checking
- Programmable 7-bit, 8-bit, 9-bit, or 10-bit character length
- Programmable 1-bit or 2-bit stop bits
- Support for three receiver wakeup methods:
 - Idle line wakeup
 - Address mark wakeup
 - Receive data match
- Automatic address matching to reduce ISR overhead:
 - Address mark matching
 - Idle line address matching
 - Address match start, address match end
- Optional 13-bit and 11-bit break character generation
- Configurable idle length detection supporting 1, 2, 4, 8, 16, 32, 64, or 128 idle characters
- Selectable transmitter output and receiver input polarity
- Hardware flow control support for request to send (RTS) and clear to send (CTS) signals
- Selectable IrDA 1.4 return-to-zero-inverted (RZI) format with a programmable pulse width
- Independent FIFO structure for transmit and receive functions:
 - Separate configurable watermarks for receive and transmit requests
 - Option for receiver to assert request after a configurable number of idle characters, if receive FIFO is not empty

Unlike other i.MX8M based SOMs the direction of the UART lines cannot be programmed. The following table shows the direction of signals of i.MX91 LPUARTs

Table 23: LPUART I/O Direction

| Signal | Direction |
|-------------|-----------|
| uartX.TX | Output |
| uartX.RX | Input |
| uartX.RTS_B | Output |
| uartX.CTS_B | Input |

8.8.1 LPUART1 Signals

Table 24: LPUART1 Signals

| Pin# | Assy | Pin Function | Alt# | Notes | Ball |
|-------|--------|--------------|------|---|----------|
| J2.45 | SDEX | uart1.CTS_B | 2 | Runs @ 1.8V | SOC.V16 |
| J2.16 | Non-AC | uart1.CTS_B | 1 | | SOC.F20 |
| J2.32 | | uart1.DCD_B | 2 | | SOC.C20 |
| J2.4 | Non-AC | uart1.DSR_B | 3 | | SOC.G20 |
| J2.14 | Non-AC | uart1.DTR_B | 3 | BOOT_MODE3 pin. Has an internal SOC PD. Do not drive until after POR_B rise + 30ms | SOC.H21 |
| J2.30 | | uart1.RIN_B | 2 | | SOC.C21 |
| J2.43 | SDEX | uart1.RTS_B | 2 | Runs @ 1.8V | SOC.U16 |
| J1.80 | | uart1.RX | 3 | Will change level according to J1.90 NVCC_SD | SOC.AA18 |
| J2.88 | | uart1.RX | 0 | Used as console debug on Variscite release | SOC.E20 |
| J2.90 | | uart1.TX | 0 | Used as console debug on Variscite release. BOOT_MODE0 pin. Do not drive until after POR_B rise + 30ms. Internal buffer connected to J2. 78 drives this pin | SOC.E21 |
| J1.86 | | uart1.TX | 3 | Will change level according to J1.90 NVCC_SD | SOC.Y18 |

8.8.2 LPUART2 Signals

Table 25: LPUART2 Signals

| Pin# | Assy | Pin Function | Alt# | Notes | Ball |
|-------|--------|--------------|------|-------------|---------|
| J2.4 | Non-AC | uart2.CTS_B | 1 | | SOC.G20 |
| J2.35 | SDEX | uart2.CTS_B | 2 | Runs @ 1.8V | SOC.T16 |
| J2.6 | Non-AC | uart2.DCD_B | 2 | | SOC.D20 |
| J2.2 | Non-AC | uart2.DSR_B | 3 | | SOC.H20 |

| Pin# | Assy | Pin Function | Alt# | Notes | Ball |
|-------|--------|--------------|------|--|----------|
| J2.10 | Non-AC | uart2.DTR_B | 3 | BOOT_MODE2 pin. Has an internal SOC PD. Do not drive until after POR_B rise + 30ms | SOC.G21 |
| J2.8 | Non-AC | uart2.RIN_B | 2 | | SOC.D21 |
| J2.14 | Non-AC | uart2.RTS_B | 1 | BOOT_MODE3 pin. Has an internal SOC PD. Do not drive until after POR_B rise + 30ms | SOC.H21 |
| J2.33 | SDEX | uart2.RTS_B | 2 | Runs @ 1.8V | SOC.V14 |
| J1.84 | | uart2.RX | 3 | Will change level according to J1.90 NVCC_SD | SOC.AA20 |
| J2.16 | Non-AC | uart2.RX | 0 | | SOC.F20 |
| J1.78 | | uart2.TX | 3 | Will change level according to J1.90 NVCC_SD | SOC.Y20 |

8.8.3 LPUART3 Signals

Table 26: LPUART3 Signals

| Pin# | Assy | Pin Function | Alt# | Notes | Ball |
|-------|--------|--------------|------|---|----------|
| J2.38 | | uart3.CTS_B | 4 | | SOC.R21 |
| J1.12 | Non-EC | uart3.CTS_B | 1 | Runs @ 1.8V | SOC.Y9 |
| J1.13 | | uart3.DCD_B | 1 | Runs @ 3.3V. Routed through PMIC internal voltage translator. Has an internal 1.47K pull up | SOC.AA11 |
| J1.9 | Non-EC | uart3.DSR_B | 1 | Runs @ 1.8V | SOC.Y8 |
| J1.3 | Non-EC | uart3.DTR_B | 1 | Runs @ 1.8V | SOC.V10 |
| J1.11 | | uart3.RIN_B | 1 | Runs @ 3.3V. Routed through PMIC internal voltage translator. Has an internal 1.47K pull up | SOC.AA10 |
| J2.46 | | uart3.RTS_B | 4 | | SOC.R20 |
| J1.2 | Non-EC | uart3.RTS_B | 1 | Runs @ 1.8V | SOC.T12 |
| J1.10 | Non-EC | uart3.RX | 1 | Runs @ 1.8V | SOC.AA8 |
| J2.77 | | uart3.RX | 1 | | SOC.P21 |
| J1.4 | Non-EC | uart3.TX | 1 | Runs @ 1.8V | SOC.W11 |
| J2.83 | | uart3.TX | 1 | | SOC.P20 |

8.8.4 LPUART4 Signals

Table 27: LPUART4 Signals

| Pin# | Assy | Pin Function | Alt# | Notes | Ball |
|-------|------|--------------|------|-------------|---------|
| J2.66 | | uart4.CTS_B | 1 | Runs @ 1.8V | SOC.AA5 |
| J2.38 | | uart4.CTS_B | 6 | | SOC.R21 |
| J2.64 | | uart4.DSR_B | 1 | Runs @ 1.8V | SOC.Y4 |
| J2.74 | | uart4.DTR_B | 1 | Runs @ 1.8V | SOC.V6 |

| Pin# | Assy | Pin Function | Alt# | Notes | Ball |
|-------|------|--------------|------|-------------|---------|
| J2.27 | SDEX | uart4.RIN_B | 1 | Runs @ 1.8V | SOC.AA6 |
| J2.67 | | uart4.RTS_B | 1 | Runs @ 1.8V | SOC.U8 |
| J2.46 | | uart4.RTS_B | 6 | | SOC.R20 |
| J2.77 | | uart4.RX | 6 | | SOC.P21 |
| J2.65 | | uart4.RX | 1 | Runs @ 1.8V | SOC.AA4 |
| J2.83 | | uart4.TX | 6 | | SOC.P20 |
| J2.70 | | uart4.TX | 1 | Runs @ 1.8V | SOC.T8 |

8.8.5 LPUART5 Signals

Table 28: LPUART5 Signals

| Pin# | Assy | Pin Function | Alt# | Notes | Ball |
|-------|------|--------------|------|--|---------|
| J3.38 | | uart5.CTS_B | 5 | Pin can be used as UART5 when BT disabled | SOC.K20 |
| J2.26 | | uart5.CTS_B | 6 | Runs @ 1.8V. Used on DART for BT communication. Pin can be used when BT disabled | SOC.Y1 |
| J2.22 | | uart5.RTS_B | 6 | Runs @ 1.8V. Used on DART for BT communication. Pin can be used when BT disabled | SOC.W2 |
| J3.58 | | uart5.RTS_B | 5 | Pin can be used as UART5 when BT disabled | SOC.K21 |
| J2.24 | | uart5.RX | 6 | Runs @ 1.8V. Used on DART for BT communication. Pin can be used when BT disabled | SOC.W1 |
| J3.50 | | uart5.RX | 5 | Pin can be used as UART5 when BT disabled | SOC.J20 |
| J2.20 | | uart5.TX | 6 | Runs @ 1.8V. Used on DART for BT communication. Pin can be used when BT disabled | SOC.Y2 |
| J3.30 | | uart5.TX | 5 | Pin can be used as UART5 when BT disabled | SOC.J21 |

8.8.6 LPUART6 Signals

Table 29: LPUART6 Signals

| Pin# | Assy | Pin Function | Alt# | Notes | Ball |
|-------|------|--------------|------|-------|---------|
| J1.19 | | uart6.CTS_B | 5 | | SOC.L20 |
| J1.17 | | uart6.RTS_B | 5 | | SOC.L21 |
| J2.85 | | uart6.RX | 5 | | SOC.L18 |
| J2.86 | | uart6.TX | 5 | | SOC.L17 |

8.8.7 LPUART7 Signals

Table 30: LPUART7 Signals

| Pin# | Assy | Pin Function | Alt# | Notes | Ball |
|-------|------|--------------|------|-------|---------|
| J2.48 | | uart7.CTS_B | 5 | | SOC.N17 |
| J2.80 | | uart7.RTS_B | 5 | | SOC.N18 |
| J2.87 | | uart7.RX | 5 | | SOC.M21 |
| J2.89 | | uart7.TX | 5 | | SOC.M20 |

8.8.8 LPUART8 Signals

Table 31: LPUART8 Signals

| Pin# | Assy | Pin Function | Alt# | Notes | Ball |
|-------|------|--------------|------|-------|---------|
| J2.83 | | uart8.CTS_B | 5 | | SOC.P20 |
| J2.77 | | uart8.RTS_B | 5 | | SOC.P21 |
| J2.81 | | uart8.RX | 5 | | SOC.N21 |
| J2.79 | | uart8.TX | 5 | | SOC.N20 |

8.9 Flexible Controller Area Network

The FlexCAN module is a communication controller implementing the CAN protocol according to the ISO 11898-1:2015 standard and CAN 2.0 B protocol specifications

Signal Description:

- CAN Rx: The receive pin from the CAN bus transceiver. Dominant state is represented by logic level '0'. Recessive state is represented by logic level '1'.
- CAN Tx: The transmit pin to the CAN bus transceiver. Dominant state is represented by logic level '0'. Recessive state is represented by logic level '1'.

8.9.1 FLEXCAN1 Signals

Table 32: FLEXCAN1 Signals

| Pin# | Assy | Pin Function | Alt# | Notes | Ball |
|-------|--------|--------------|------|---|---------|
| J2.4 | Non-AC | can1.RX | 4 | | SOC.G20 |
| J2.56 | | can1.RX | 6 | | SOC.J17 |
| J2.14 | Non-AC | can1.TX | 4 | BOOT_MODE3 pin. Has an internal SOC PD. Do not drive until after POR_B rise + 30ms. | SOC.H21 |
| J2.50 | | can1.TX | 6 | | SOC.G17 |

8.9.2 FLEXCAN2 Signals

Table 33: FLEXCAN2 Signals

| Pin# | Assy | Pin Function | Alt# | Notes | Ball |
|-------|--------|--------------|------|---|----------|
| J1.6 | Non-EC | can2.RX | 2 | Runs @ 1.8V. | SOC.U12 |
| J1.80 | | can2.RX | 2 | Will change level according to J1.90 NVCC_SD. | SOC.AA18 |
| J2.20 | | can2.RX | 3 | Runs @ 1.8V. Used on DART for BT communication. If BT not required internal buffer can be disabled, and pin function released to customer usage. | SOC.Y2 |
| J2.54 | | can2.RX | 2 | | SOC.W21 |
| J1.8 | Non-EC | can2.TX | 2 | Runs @ 1.8V. | SOC.V12 |
| J1.86 | | can2.TX | 2 | Will change level according to J1.90 NVCC_SD. | SOC.Y18 |
| J2.24 | | can2.TX | 3 | Runs @ 1.8V. Used on DART for BT communication. If BT not required internal buffer can be disabled, and pin function released to customer usage. | SOC.W1 |
| J2.60 | | can2.TX | 2 | | SOC.V21 |

8.10 LPSPI - Low Power Serial Peripheral Interface

The DART-MX91 exposes up to 7 LPSPI interfaces.

LPSPI provides an efficient interface to a SPI bus, either as a master or slave. A SPI bus is a synchronous serial communication interface used in embedded systems. It is typically used to perform short distance communications between microcontrollers and peripheral devices, on printed circuit boards. Typical applications include interfacing to Secure Digital cards and LCD displays.

Key features of the ECSPI include:

- Requires minimal CPU overhead, with DMA offloading of FIFO register accesses
- Continues operating in Stop mode, if configured to do so and an appropriate clock is available
- Supports DMA accesses and generates DMA requests
- 32-bit word size
- Configurable clock polarity and phase
- Master mode—supports up to 2 peripheral chip selects
- Slave mode
- 8-word transmit and command FIFO
- 8-word receive FIFO
- Flexible timing parameters in Master mode, including SCK frequency and duty cycle, and delays between PCS and SCK edges
- Continuous transfer option to keep PCS asserted across multiple frames
- Full-duplex transfers support 1-bit transmit and receive on each clock edge
- Half-duplex transfers support:
 - 1-bit transmit or receive on each clock edge
- Receive data match logic supports discard of non-matching data and interrupt on data match

Note: For interacting multiple peripherals on same SPI bus, one can define any GPIO to be used as chip select. Examples can be found in our DTS files.

8.10.1 LPSPI1 Signals

Table 34: LPSPI1 Signals

| Pin# | Assy | Pin Function | Alt# | Notes | Ball |
|-------|--------|--------------|------|---|---------|
| J2.10 | | spi1.PCS0 | 2 | BOOT_MODE2 pin. Has an internal SOC PD. Do not drive until after POR_B rise + 30ms | SOC.G21 |
| J2.56 | | spi1.PCS1 | 2 | | SOC.J17 |
| J2.14 | Non-AC | spi1.SCK | 2 | BOOT_MODE3 pin. Has an internal SOC PD. Do not drive until after POR_B rise + 30ms. | SOC.H21 |
| J2.4 | Non-AC | spi1.SIN | 2 | | SOC.G20 |
| J2.2 | Non-AC | spi1.SOUT | 2 | | SOC.H20 |

8.10.2 LPSPI2 Signals

Table 35: LPSPI2 Signals

| Pin# | Assy | Pin Function | Alt# | Notes | Ball |
|-------|--------|--------------|------|---|---------|
| J2.90 | | spi2.PCS0 | 2 | Used as console debug on Variscite release. BOOT_MODE0 pin. Do not drive until after POR_B rise + 30ms. Internal buffer connected to J2.78 drives this pin | SOC.E21 |
| J1.9 | Non-EC | spi2.PCS0 | 2 | Runs @ 1.8V | SOC.Y8 |
| J3.62 | | spi2.PCS1 | 2 | | SOC.G18 |
| J1.3 | Non-EC | spi2.SCK | 2 | Runs @ 1.8V | SOC.V10 |
| J2.88 | | spi2.SIN | 2 | Used as console debug on Variscite release | SOC.E20 |
| J1.5 | Non-EC | spi2.SIN | 2 | Runs @ 1.8V | SOC.U10 |
| J2.16 | Non-AC | spi2.SOUT | 2 | | SOC.F20 |
| J1.7 | Non-EC | spi2.SOUT | 2 | Runs @ 1.8V. Has EMI filter | SOC.AA7 |

8.10.3 LPSPI3 Signals

Table 36: LPSPI3 Signals

| Pin# | Assy | Pin Function | Alt# | Notes | Ball |
|-------|------|--------------|------|-------|---------|
| J2.89 | | spi3.PCS0 | 1 | | SOC.M20 |
| J1.17 | | spi3.PCS1 | 1 | | SOC.L21 |
| J2.80 | | spi3.SCK | 1 | | SOC.N18 |
| J2.87 | | spi3.SIN | 1 | | SOC.M21 |
| J2.48 | | spi3.SOUT | 1 | | SOC.N17 |

8.10.4 LPSPI4 Signals

Table 37: LPSPI4 Signals

| Pin# | Assy | Pin Function | Alt# | Notes | Ball |
|-------|------|--------------|------|-------|---------|
| J2.40 | | spi4.PCS0 | 5 | | SOC.R18 |
| J2.46 | | spi4.PCS1 | 5 | | SOC.R20 |
| J2.38 | | spi4.PCS2 | 5 | | SOC.R21 |
| J2.44 | | spi4.SCK | 5 | | SOC.T21 |
| J2.34 | | spi4.SIN | 5 | | SOC.R17 |
| J2.36 | | spi4.SOUT | 5 | | SOC.T20 |

8.10.5 LPSPI5 Signals

Table 38: LPSPI5 Signals

| Pin# | Assy | Pin Function | Alt# | Notes | Ball |
|-------|------|--------------|------|-------|---------|
| J2.40 | | spi5.PCS0 | 4 | | SOC.R18 |
| J2.54 | | spi5.PCS1 | 6 | | SOC.W21 |
| J2.44 | | spi5.SCK | 4 | | SOC.T21 |
| J2.34 | | spi5.SIN | 4 | | SOC.R17 |
| J2.36 | | spi5.SOUT | 4 | | SOC.T20 |

8.10.6 LPSP16 Signals

Table 39: LPSP16 Signals

| Pin# | Assy | Pin Function | Alt# | Notes | Ball |
|-------|------|--------------|------|-------|---------|
| J3.30 | | spi6.PCS0 | 4 | | SOC.J21 |
| J3.64 | | spi6.PCS1 | 6 | | SOC.U21 |
| J3.58 | | spi6.SCK | 4 | | SOC.K21 |
| J3.50 | | spi6.SIN | 4 | | SOC.J20 |
| J3.38 | | spi6.SOUT | 4 | | SOC.K20 |

8.10.7 LPSP17 Signals

Table 40: LPSP17 Signals

| Pin# | Assy | Pin Function | Alt# | Notes | Ball |
|-------|------|--------------|------|-------|---------|
| J2.86 | | spi7.PCS0 | 4 | | SOC.L17 |
| J2.60 | | spi7.PCS1 | 6 | | SOC.V21 |
| J1.17 | | spi7.SCK | 4 | | SOC.L21 |
| J2.85 | | spi7.SIN | 4 | | SOC.L18 |
| J1.19 | | spi7.SOUT | 4 | | SOC.L20 |

8.10.8 LPSP18 Signals

Table 41: LPSP18 Signals

| Pin# | Assy | Pin Function | Alt# | Notes | Ball |
|-------|------|--------------|------|-------|---------|
| J2.79 | | spi8.PCS0 | 4 | | SOC.N20 |
| J2.42 | | spi8.PCS1 | 6 | | SOC.V20 |
| J2.77 | | spi8.SCK | 4 | | SOC.P21 |
| J2.81 | | spi8.SIN | 4 | | SOC.N21 |
| J2.83 | | spi8.SOUT | 4 | | SOC.P20 |

8.11 FlexSPI - Flexible Serial Peripheral Interface

The DART-MX91 exposes one FlexSPI module which can be used to interface external serial flash devices.

The module contains the following features:

- Flexible sequence engine to support various flash vendor devices
- Single pad/Dual pad/Quad pad mode of operation
- Single Data Rate/Double Data Rate mode of operation
- DMA support
- Memory mapped read access to connected flash devices

Note: To use FlexSPI a special assembly module should be ordered.
The module should not have a Wi-Fi option assembled,
and SDEX assembly option should be selected.
FlexSPI signals are referenced to 1.8v.

8.11.1 FlexSPI Signals

Table 42: FlexSPI Signals

| Pin# | Assy | Pin Function | Alt# | Notes | Ball |
|-------|------|-------------------|------|--------------|---------|
| J2.35 | SDEX | flexspi.A_DATA[0] | 1 | Runs @ 1.8V. | SOC.T16 |
| J2.33 | SDEX | flexspi.A_DATA[1] | 1 | Runs @ 1.8V. | SOC.V14 |
| J2.31 | SDEX | flexspi.A_DATA[2] | 1 | Runs @ 1.8V. | SOC.U14 |
| J2.29 | SDEX | flexspi.A_DATA[3] | 1 | Runs @ 1.8V. | SOC.T14 |
| J2.45 | SDEX | flexspi.A_SCLK | 1 | Runs @ 1.8V. | SOC.V16 |
| J2.43 | SDEX | flexspi.A_SS0_B | 1 | Runs @ 1.8V. | SOC.U16 |

8.12 TPM - Timer/PWM Module

The DART-MX91 exports up to 6 TPM channels.

The TPM (Timer/PWM Module) is a 4-channel timer that supports input capture, output compare, and the generation of PWM signals to control electric motor and power management applications. The counter, compare and capture registers are clocked by an asynchronous clock that can remain enabled in low power modes.

PWM Features:

- TPM clock mode is selectable
 - Can increment on every edge of the asynchronous counter clock
 - Can increment on rising edge of an external clock input synchronized to the asynchronous counter clock
- Pre-scaler divide-by 1, 2, 4, 8, 16, 32, 64, or 128
- TPM includes a 32-bit TPM counter
 - It can be a free-running counter or modulo counter
 - The counting can be up or up-down
- Includes 4 channels that can be configured as follows:
 - Input capture mode: the capture can occur on rising edges, falling edges or both edges
 - Output compare mode: the output signal can be set, cleared, pulsed, or toggled on match
- Edge-aligned or center-aligned PWM mode for all channels
- Support the generation of an interrupt and/or DMA request per channel
- Support the generation of an interrupt and/or DMA request when the counter overflows
- Support selectable trigger input to optionally reset or cause the counter to start incrementing.
 - The counter can also optionally stop incrementing on counter overflow
- Support the generation of hardware triggers when the counter overflows and per channel

8.12.1 TPM1 Signals

Table 43: TPM1 Signals

| Pin# | Assy | Pin Function | Alt# | Notes | Ball |
|-------|--------|--------------|------|--|---------|
| J2.88 | | tpm1.CH0 | 3 | Used as console debug on Variscite release. | SOC.E20 |
| J2.90 | | tpm1.CH1 | 3 | Used as console debug on Variscite release. BOOT_MODE0 pin. Do not drive until after POR_B rise + 30ms. Internal buffer connected to J2.78 drives this pin, latched with POR_B rise. | SOC.E21 |
| J2.16 | Non-AC | tpm1.CH2 | 3 | | SOC.F20 |
| J2.56 | | tpm1.EXTCLK | 3 | | SOC.J17 |

8.12.2 TPM2 Signals

Table 44: TPM2 Signals

| Pin# | Assy | Pin Function | Alt# | Notes | Ball |
|-------|--------|--------------|------|-------|---------|
| J2.32 | | tpm2.CH0 | 3 | | SOC.C20 |
| J2.30 | | tpm2.CH1 | 3 | | SOC.C21 |
| J2.6 | Non-AC | tpm2.CH2 | 3 | | SOC.D20 |
| J2.8 | Non-AC | tpm2.CH3 | 3 | | SOC.D21 |
| J3.62 | | tpm2.EXTCLK | 3 | | SOC.G18 |

8.12.3 TPM3 Signals

Table 45: TPM3 Signals

| Pin# | Assy | Pin Function | Alt# | Notes | Ball |
|-------|------|--------------|------|-------|---------|
| J2.86 | | tpm3.CH0 | 1 | | SOC.L17 |
| J2.36 | | tpm3.CH1 | 6 | | SOC.T20 |
| J2.79 | | tpm3.CH2 | 1 | | SOC.N20 |
| J3.64 | | tpm3.CH3 | 4 | | SOC.U21 |
| J2.87 | | tpm3.EXTCLK | 4 | | SOC.M21 |

8.12.4 TPM4 Signals

Table 46: TPM4 Signals

| Pin# | Assy | Pin Function | Alt# | Notes | Ball |
|-------|------|--------------|------|-------|---------|
| J2.85 | | tpm4.CH0 | 1 | | SOC.L18 |
| J2.44 | | tpm4.CH1 | 6 | | SOC.T21 |
| J2.81 | | tpm4.CH2 | 1 | | SOC.N21 |
| J2.60 | | tpm4.CH3 | 4 | | SOC.V21 |
| J2.48 | | tpm4.EXTCLK | 4 | | SOC.N17 |

8.12.5 TPM5 Signals

Table 47: TPM5 Signals

| Pin# | Assy | Pin Function | Alt# | Notes | Ball |
|-------|------|--------------|------|-------|---------|
| J1.19 | | tpm5.CH0 | 1 | | SOC.L20 |
| J3.42 | | tpm5.CH1 | 4 | | SOC.U18 |
| J2.40 | | tpm5.CH2 | 6 | | SOC.R18 |

| Pin# | Assy | Pin Function | Alt# | Notes | Ball |
|-------|------|--------------|------|-------|---------|
| J2.42 | | tpm5.CH3 | 4 | | SOC.V20 |
| J2.80 | | tpm5.EXTCLK | 4 | | SOC.N18 |

8.12.6 TPM6 Signals

Table 48: TPM6 Signals

| Pin# | Assy | Pin Function | Alt# | Notes | Ball |
|-------|------|--------------|------|-------|---------|
| J2.89 | | tpm6.CH0 | 4 | | SOC.M20 |
| J3.46 | | tpm6.CH1 | 4 | | SOC.U20 |
| J2.34 | | tpm6.CH2 | 6 | | SOC.R17 |
| J2.54 | | tpm6.CH3 | 4 | | SOC.W21 |
| J3.42 | | tpm6.EXTCLK | 5 | | SOC.U18 |

8.13 LPI2C - Low Power Inter-Integrated Circuit

The DART-MX91 exposes up to seven I2C Interfaces provides access to external serial devices.

The I2C (Inter-Integrated Circuit) serial bus is multi-controller, multi-target, packet-switched, and single-ended, and is often used to attach microcontroller ICs to lower-speed peripheral ICs.

LPI2C is a low-power Inter-Integrated Circuit (I2C) module that supports an efficient interface to an I2C bus as a controller and/or as a target. The LPI2C module also complies with the System Management Bus (SMBus) Specification, version 3. The SMBus is a single-ended simple two-wire bus, which is typically used for low-bandwidth communications.

The LPI2C has the following key features:

- Standard, Fast, Fast+ and Ultra-Fast modes
- High-speed mode (HS) in target mode
- Multi-controller, including synchronization and arbitration. Multi-controller means that any number of controller nodes can be present. Additionally, controller and target roles may be changed between messages (after a STOP is sent).
- Clock stretching. Sometimes multiple I2C nodes may drive the lines at the same time. If any I2C node is driving a line low, then that line is low. I2C nodes that are starting to transmit a logical one (by letting the line float high) can detect that the line is low. In this way, the nodes can identify that another I2C node is active at the same time.
 - When node detection is used on the SCL line, it is called clock stretching. Clock stretching is used as an I2C flow control mechanism.
 - When node detection is used on the SDA line, it is called arbitration. Arbitration ensures that there is only one I2C node transmitter at a time.
- General call, seven-bit addressing, and ten-bit addressing
- Software reset, START byte, and Device ID (also require software support)

8.13.1 LPI2C1 Signals

Table 49: LPI2C1 Signals

| Pin# | Assy | Pin Function | Alt# | Notes | Ball |
|-------|------|--------------|------|---|----------|
| J1.13 | | i2c1.SCL | 6 | Runs @ 3.3V. Routed through PMIC internal voltage translator. Has an internal 1.47K pull up | SOC.AA11 |
| J2.32 | | i2c1.SCL | 0 | | SOC.C20 |
| J1.74 | | i2c1.SCL | 3 | External SD card detect input. Will change level according to J1.90 NVCC_SD | SOC.Y17 |
| J1.11 | | i2c1.SDA | 6 | Runs @ 3.3V. Routed through PMIC internal voltage translator. Has an internal 1.47K pull up | SOC.AA10 |
| J2.30 | | i2c1.SDA | 0 | | SOC.C21 |
| J1.82 | | i2c1.SDA | 3 | Will change level according to J1.90 NVCC_SD | SOC.AA19 |

8.13.2 LPI2C2 Signals

Table 50: LPI2C2 Signals

| Pin# | Assy | Pin Function | Alt# | Notes | Ball |
|------|--------|--------------|------|-------------|---------|
| J1.8 | Non-EC | i2c2.SCL | 6 | Runs @ 1.8V | SOC.V12 |
| J2.6 | Non-AC | i2c2.SCL | 0 | | SOC.D20 |
| J1.6 | Non-EC | i2c2.SDA | 6 | Runs @ 1.8V | SOC.U12 |
| J2.8 | Non-AC | i2c2.SDA | 0 | | SOC.D21 |

8.13.3 LPI2C4 Signals

Table 51: LPI2C4 Signals

| Pin# | Assy | Pin Function | Alt# | Notes | Ball |
|-------|------|--------------|------|-------------|---------|
| J2.29 | SDEX | i2c4.SCL | 2 | Runs @ 1.8V | SOC.T14 |
| J3.58 | | i2c4.SCL | 1 | | SOC.K21 |
| J2.31 | SDEX | i2c4.SDA | 2 | Runs @ 1.8V | SOC.U14 |
| J3.38 | | i2c4.SDA | 1 | | SOC.K20 |

8.13.4 LPI2C5 Signals

Table 52: LPI2C5 Signals

| Pin# | Assy | Pin Function | Alt# | Notes | Ball |
|-------|------|--------------|------|-------|---------|
| J3.50 | | i2c5.SCL | 6 | | SOC.J20 |
| J3.46 | | i2c5.SCL | 6 | | SOC.U20 |
| J3.42 | | i2c5.SDA | 6 | | SOC.U18 |
| J3.30 | | i2c5.SDA | 6 | | SOC.J21 |

8.13.5 LPI2C6 Signals

Table 53: LPI2C6 Signals

| Pin# | Assy | Pin Function | Alt# | Notes | Ball |
|-------|------|--------------|------|-------|---------|
| J2.85 | | i2c6.SCL | 6 | | SOC.L18 |
| J3.58 | | i2c6.SCL | 6 | | SOC.K21 |
| J2.86 | | i2c6.SDA | 6 | | SOC.L17 |
| J3.38 | | i2c6.SDA | 6 | | SOC.K20 |

8.13.6 LPI2C7 Signals

Table 54: LPI2C7 Signals

| Pin# | Assy | Pin Function | Alt# | Notes | Ball |
|-------|------|--------------|------|-------|---------|
| J2.87 | | i2c7.SCL | 6 | | SOC.M21 |
| J1.17 | | i2c7.SCL | 6 | | SOC.L21 |
| J2.89 | | i2c7.SDA | 6 | | SOC.M20 |
| J1.19 | | i2c7.SDA | 6 | | SOC.L20 |

8.13.7 LPI2C8 Signals

Table 55: LPI2C8 Signals

| Pin# | Assy | Pin Function | Alt# | Notes | Ball |
|-------|------|--------------|------|-------|---------|
| J2.80 | | i2c8.SCL | 6 | | SOC.N18 |
| J2.81 | | i2c8.SCL | 6 | | SOC.N21 |
| J2.48 | | i2c8.SDA | 6 | | SOC.N17 |
| J2.79 | | i2c8.SDA | 6 | | SOC.N20 |

8.14 I3C - Improved Inter-Integrated Circuit

The MIPI Alliance Improved Inter-Integrated Circuit (MIPI I3C) improves upon the use and power of I2C, and provides an alternative to SPI for mid-speed applications.

The I3C bus protocol supports:

- In-band interrupts (IBI). These interrupts go from target to controller without extra wires, and the controller knows which target sent the interrupt.
- Common Command Codes (CCC)
- Dynamic addressing
- Multi-controller/multi-drop
- Hot-Join (HJ)
- I2C compatibility

The I3C peripheral supports all required and most optional features of the MIPI Alliance Specification for I3C, v1.0 and v1.1, except for ternary data rates (HDR-TSP and HDR-TSL).

The I3C module has the following key features:

- Two-wire multi-drop bus capable of 12.5 MHz clock speeds, with up to 11 devices.
 - Uses standard pads with 4 mA drive.
 - Dynamically assigns target addresses, and targets do not require static addresses. However, targets may have an I2C static address assigned at start-up, so the target can operate on an I2C bus. By default, I3C supports seven-bit I2C-style addresses.
 - Supports extended I2C 10-bit addressing through Map Feature Control 1 (SMAPCTRL1) register.
 - Allows targets to use the inbound SCL clock as the peripheral clock (instead of the clock from the controller) so devices can have slow or inaccurate clocks internally.
 - Allows simple targets, such as temperature sensors, to have no internal clock.
 - I3C controller supports handoff from Open Drain to Push-Pull mode for ACK to data transfer.
 - Normally the controller terminates the read, but for I3C, the target can also end the read.
- In-Band Interrupts (IBI) allow targets to send notifications to a controller.
 - Can be equivalent to a separate GPIO, but can also be directly data-bearing.
 - Can be prioritized. When multiple targets send interrupts to a controller at the same time, the order is resolved. Dynamic addresses establish the priority of the targets, so the controller controls the priority of the targets. Targets with lower-value dynamic addresses are higher priority level IBIs.
 - Can start interrupts even when the controller is not active on the bus. No free-running clock is needed, but starting an interrupt requires a Bus Available condition.
 - Can resolve an initial event via a time-stamping option, not requiring an interrupt.
- Built-in commands are in a separate space. These commands do not collide with normal controller-to-target messages.
 - Controls bus behavior, modes and states, low-power state, inquiries, and more.
 - Has additional room for new built-in commands to be used by other groups.
- Organized forms of multi-controller modes:
 - Secondary controllers, which use clean handoffs between different controllers.

- Hot-join onto I3C bus allows devices to connect to the bus later than when the bus starts.
 - Enables a device or module to get onto the I3C bus when it woke up after power-up or was physically inserted onto the I3C bus.
 - Provides a clean method for notification when new devices or modules get onto the I3C bus.
- Can use both I2C and I3C buses.
 - I3C supports specific legacy I2C devices on the bus.
 - I3C target devices can operate on I2C buses.
 - Supports bridging to I2C, SPI, UART, and other buses.
- Higher data rate modes are available.
 - Has a High Data Rate - Double Data Rate (HDR-DDR) mode, which is double the data rate of SDR (about 20 Mbit/s)
 - Only the controller and the specific target must support the higher data rate. The other targets can ignore it.

The I3C peripheral supports the full I3C feature set, except for the ternary data rates (HDR-TSP and HDR-TSL).

8.14.1 I3C1 Signals

Table 56: I3C1 Signals

| Pin# | Assy | Pin Function | Alt# | Notes | Ball |
|-------|--------|--------------|------|-------|---------|
| J2.6 | Non-AC | i3c1.PUR | 1 | | SOC.D20 |
| J2.6 | Non-AC | i3c1.PUR_B | 6 | | SOC.D20 |
| J2.32 | | i3c1.SCL | 1 | | SOC.C20 |
| J2.30 | | i3c1.SDA | 1 | | SOC.C21 |

8.14.2 I3C2 Signals

Table 57: I3C2 Signals

| Pin# | Assy | Pin Function | Alt# | Notes | Ball |
|-------|--------|--------------|------|--|----------|
| J1.2 | Non-EC | i3c2.PUR | 2 | Runs @ 1.8V. | SOC.T12 |
| J1.88 | | i3c2.PUR | 2 | Will change level according to J1.90 NVCC_SD. | SOC.Y19 |
| J1.2 | Non-EC | i3c2.PUR_B | 6 | Runs @ 1.8V. | SOC.T12 |
| J1.88 | | i3c2.PUR_B | 3 | Will change level according to J1.90 NVCC_SD. | SOC.Y19 |
| J1.13 | | i3c2.SCL | 2 | Runs @ 3.3V. Routed through PMIC internal voltage translator. Has an internal 1.47K pull up. | SOC.AA11 |
| J1.74 | | i3c2.SCL | 2 | External SD card detect input. Will change level according to J1.90 NVCC_SD. | SOC.Y17 |
| J1.11 | | i3c2.SDA | 2 | Runs @ 3.3V. Routed through PMIC internal voltage translator. Has an internal 1.47K pull up. | SOC.AA10 |
| J1.82 | | i3c2.SDA | 2 | Will change level according to J1.90 NVCC_SD. | SOC.AA19 |

8.15 GPIO - General-Purpose Input/Output

The DART-MX91 exposes up to 85 General-Purpose Input/Output pins.

The GPIO module has the following key features:

- Port Data Input (PDIR) register displays the logic value on each pin when the pin is configured for any digital function provided the corresponding Port Control and Interrupt module for that pin are enabled.
- Port Data Output (PDOR) register with corresponding set/clear/toggle registers controls output data of each pin when the pin is configured for the GPIO function.
- Port Data Direction (PDDR) register controls the direction of each pin when the pin is configured for the GPIO function.
- Port Input Disable (PIDR) register controls the disable of the input for each general-purpose pin.
- Pin interrupts
 - Interrupt flag and enable registers for each pin are functional in all digital pin muxing modes.
 - Support for interrupt or DMA request configured per pin.
 - Support for edge sensitive (rising or falling, or both) or level sensitive (low, high) configured per pin.
 - Asynchronous wake-up in Low-Power modes.
 - GPIO module generates a total of 2 interrupts and 2 DMA requests.
 - Each pin can be used to generate a single interrupt or DMA request.
- Protection registers
 - Each pin is configured for Secure or Non-Secure and Privilege/Non-Privilege access.
 - Each interrupt and DMA request domain is configured for Secure or Non-Secure and Privilege/Non-Privilege access.

8.15.1.1 GPIO Signals

Table 58: GPIO Signals

| Pin# | Assy | Pin Function | Alt# | Notes | Ball |
|-------|--------|--------------|------|--|---------|
| J2.32 | | gpio1.I0[0] | 5 | | SOC.C20 |
| J2.30 | | gpio1.I0[1] | 5 | | SOC.C21 |
| J3.62 | | gpio1.I0[10] | 5 | | SOC.G18 |
| J2.10 | | gpio1.I0[11] | 5 | BOOT_MODE2 pin. Has an internal SOC PD. Do not drive until after POR_B rise + 30ms | SOC.G21 |
| J2.4 | Non-AC | gpio1.I0[12] | 5 | | SOC.G20 |
| J2.14 | Non-AC | gpio1.I0[13] | 5 | BOOT_MODE3 pin. Has an internal SOC PD. Do not drive until after POR_B rise + 30ms. | SOC.H21 |
| J2.2 | Non-AC | gpio1.I0[14] | 5 | | SOC.H20 |
| J2.28 | | gpio1.I0[15] | 5 | | SOC.J18 |
| J2.6 | Non-AC | gpio1.I0[2] | 5 | | SOC.D20 |
| J2.8 | Non-AC | gpio1.I0[3] | 5 | | SOC.D21 |
| J2.88 | | gpio1.I0[4] | 5 | Used as console debug on Variscite release. | SOC.E20 |
| J2.90 | | gpio1.I0[5] | 5 | Used as console debug on Variscite release. BOOT_MODE0 pin. Do not drive until after POR_B rise + 30ms. Internal buffer connected to J2.78 drives this pin, latched with POR_B rise. | SOC.E21 |
| J2.16 | Non-AC | gpio1.I0[6] | 5 | | SOC.F20 |
| J2.50 | | gpio1.I0[8] | 5 | | SOC.G17 |
| J2.56 | | gpio1.I0[9] | 5 | | SOC.J17 |
| J3.30 | | gpio2.I0[0] | 0 | | SOC.J21 |
| J2.48 | | gpio2.I0[10] | 0 | | SOC.N17 |
| J3.50 | | gpio2.I0[1] | 0 | | SOC.J20 |
| J2.80 | | gpio2.I0[11] | 0 | | SOC.N18 |
| J2.79 | | gpio2.I0[12] | 0 | | SOC.N20 |
| J2.81 | | gpio2.I0[13] | 0 | | SOC.N21 |
| J2.83 | | gpio2.I0[14] | 0 | | SOC.P20 |
| J2.77 | | gpio2.I0[15] | 0 | | SOC.P21 |
| J2.38 | | gpio2.I0[16] | 0 | | SOC.R21 |
| J2.46 | | gpio2.I0[17] | 0 | | SOC.R20 |
| J2.40 | | gpio2.I0[18] | 0 | | SOC.R18 |
| J2.34 | | gpio2.I0[19] | 0 | | SOC.R17 |
| J2.36 | | gpio2.I0[20] | 0 | | SOC.T20 |
| J3.38 | | gpio2.I0[2] | 0 | | SOC.K20 |
| J2.44 | | gpio2.I0[21] | 0 | | SOC.T21 |

DART-MX91 SYSTEM ON MODULE

| Pin# | Assy | Pin Function | Alt# | Notes | Ball |
|-------|------|--------------|------|---|----------|
| J3.42 | | gpio2.IO[22] | 0 | | SOC.U18 |
| J3.46 | | gpio2.IO[23] | 0 | | SOC.U20 |
| J3.64 | | gpio2.IO[24] | 0 | | SOC.U21 |
| J2.60 | | gpio2.IO[25] | 0 | | SOC.V21 |
| J2.42 | | gpio2.IO[26] | 0 | | SOC.V20 |
| J2.54 | | gpio2.IO[27] | 0 | | SOC.W21 |
| J3.58 | | gpio2.IO[3] | 0 | | SOC.K21 |
| J2.86 | | gpio2.IO[4] | 0 | | SOC.L17 |
| J2.85 | | gpio2.IO[5] | 0 | | SOC.L18 |
| J1.19 | | gpio2.IO[6] | 0 | | SOC.L20 |
| J1.17 | | gpio2.IO[7] | 0 | | SOC.L21 |
| J2.89 | | gpio2.IO[8] | 0 | | SOC.M20 |
| J2.87 | | gpio2.IO[9] | 0 | | SOC.M21 |
| J1.74 | | gpio3.IO[0] | 5 | Will change level according to J1.90 NVCC_SD. | SOC.Y17 |
| J1.82 | | gpio3.IO[1] | 5 | Will change level according to J1.90 NVCC_SD. | SOC.AA19 |
| J1.88 | | gpio3.IO[2] | 5 | Will change level according to J1.90 NVCC_SD. | SOC.Y19 |
| J2.45 | SDEX | gpio3.IO[20] | 5 | Runs @ 1.8V. | SOC.V16 |
| J2.43 | SDEX | gpio3.IO[21] | 5 | Runs @ 1.8V. | SOC.U16 |
| J2.35 | SDEX | gpio3.IO[22] | 5 | Runs @ 1.8V. | SOC.T16 |
| J2.33 | SDEX | gpio3.IO[23] | 5 | Runs @ 1.8V. | SOC.V14 |
| J2.31 | SDEX | gpio3.IO[24] | 5 | Runs @ 1.8V. | SOC.U14 |
| J2.29 | SDEX | gpio3.IO[25] | 5 | Runs @ 1.8V. | SOC.T14 |
| J2.76 | | gpio3.IO[26] | 5 | Runs @ 1.8V. Has an internal 12K pull down. | SOC.AA2 |
| J3.48 | | gpio3.IO[27] | 5 | Runs @ 1.8V. | SOC.Y3 |
| J2.24 | | gpio3.IO[28] | 5 | Runs @ 1.8V. Used on DART for BT communication. If BT not required internal buffer can be disabled, and pin function released to customer usage. | SOC.W1 |
| J2.22 | | gpio3.IO[29] | 5 | Runs @ 1.8V. Used on DART for BT communication. If BT not required internal buffer can be disabled, and pin function released to customer usage. | SOC.W2 |
| J1.86 | | gpio3.IO[3] | 5 | Will change level according to J1.90 NVCC_SD. | SOC.Y18 |
| J2.26 | | gpio3.IO[3] | 5 | Runs @ 1.8V. Used on DART for BT communication. If BT not required internal buffer can be disabled, and pin function released to customer usage. | SOC.Y1 |
| J2.20 | | gpio3.IO[31] | 5 | Runs @ 1.8V. Used on DART for BT communication. If BT not required internal buffer can be disabled, and pin function released to customer usage. | SOC.Y2 |
| J1.80 | | gpio3.IO[4] | 5 | Will change level according to J1.90 NVCC_SD. | SOC.AA18 |

DART-MX91 SYSTEM ON MODULE

| Pin# | Assy | Pin Function | Alt# | Notes | Ball |
|-------|--------|--------------|------|--|----------|
| J1.78 | | gpio3.IO[5] | 5 | Will change level according to J1.90 NVCC_SD. | SOC.Y20 |
| J1.84 | | gpio3.IO[6] | 5 | Will change level according to J1.90 NVCC_SD. | SOC.AA20 |
| J2.25 | SDEX | gpio3.IO[7] | 5 | Runs @ J1.90 VDD_SDIO2 level. | SOC.AA17 |
| J1.13 | | gpio4.IO[0] | 5 | Runs @ 3.3V. Routed through PMIC internal voltage translator. Has an internal 1.47K pull up. | SOC.AA11 |
| J1.10 | Non-EC | gpio4.IO[10] | 5 | Runs @ 1.8V. | SOC.AA8 |
| J1.11 | | gpio4.IO[1] | 5 | Runs @ 3.3V. Routed through PMIC internal voltage translator. Has an internal 1.47K pull up. | SOC.AA10 |
| J1.12 | Non-EC | gpio4.IO[11] | 5 | Runs @ 1.8V. | SOC.Y9 |
| J1.14 | Non-EC | gpio4.IO[12] | 5 | Runs @ 1.8V. | SOC.AA9 |
| J1.16 | Non-EC | gpio4.IO[13] | 5 | Runs @ 1.8V. | SOC.Y10 |
| J2.27 | SDEX | gpio4.IO[15] | 5 | Runs @ 1.8V. | SOC.AA6 |
| J2.73 | | gpio4.IO[16] | 5 | Runs @ 1.8V. | SOC.T10 |
| J2.78 | | gpio4.IO[17] | 5 | Runs @ 1.8V. Internal buffer connected to this pin drives BOOT_MODE0 (J2.90), latched with POR_B rise. | SOC.V8 |
| J2.67 | | gpio4.IO[18] | 5 | Runs @ 1.8V. | SOC.U8 |
| J2.70 | | gpio4.IO[19] | 5 | Runs @ 1.8V. | SOC.T8 |
| J1.8 | Non-EC | gpio4.IO[2] | 5 | Runs @ 1.8V. | SOC.V12 |
| J2.74 | | gpio4.IO[20] | 5 | Runs @ 1.8V. | SOC.V6 |
| J2.71 | | gpio4.IO[21] | 5 | Runs @ 1.8V. | SOC.U6 |
| J2.64 | | gpio4.IO[22] | 5 | Runs @ 1.8V. | SOC.Y4 |
| J2.72 | | gpio4.IO[23] | 5 | Runs @ 1.8V. | SOC.AA3 |
| J2.65 | | gpio4.IO[24] | 5 | Runs @ 1.8V. | SOC.AA4 |
| J2.69 | | gpio4.IO[25] | 5 | Runs @ 1.8V. | SOC.Y5 |
| J2.66 | | gpio4.IO[26] | 5 | Runs @ 1.8V. | SOC.AA5 |
| J2.68 | | gpio4.IO[27] | 5 | Runs @ 1.8V. | SOC.Y6 |
| J1.28 | | gpio4.IO[28] | 5 | Runs @ 1.8V. | SOC.U4 |
| J3.52 | | gpio4.IO[29] | 5 | Runs @ 1.8V. | SOC.V4 |
| J1.6 | Non-EC | gpio4.IO[3] | 5 | Runs @ 1.8V. | SOC.U12 |
| J1.2 | Non-EC | gpio4.IO[4] | 5 | Runs @ 1.8V. | SOC.T12 |
| J1.4 | Non-EC | gpio4.IO[5] | 5 | Runs @ 1.8V. | SOC.W11 |
| J1.3 | Non-EC | gpio4.IO[6] | 5 | Runs @ 1.8V. | SOC.V10 |
| J1.5 | Non-EC | gpio4.IO[7] | 5 | Runs @ 1.8V. | SOC.U10 |
| J1.9 | Non-EC | gpio4.IO[8] | 5 | Runs @ 1.8V. | SOC.Y8 |
| J1.7 | Non-EC | gpio4.IO[9] | 5 | Runs @ 1.8V. Has EMI filter. | SOC.AA7 |

8.16 LPTMR - Low-Power Timer

The low-power timer (LPTMR) can be configured to operate as a time counter with optional prescaler, or as a pulse counter with optional glitch filter, across all power modes, including the low-power modes. It is reset only on Power on Reset (POR) or Low Voltage Detect (LVD), allowing it to be used as a time-of-day counter.

The LPTMR module has the following key features:

- 32-bit time counter or pulse counter with compare
 - Optional interrupt can generate asynchronous wake-up from any low-power mode.
 - Hardware trigger output.
 - Counter supports free-running mode or reset on compare.
- Configurable clock source for prescaler/glitch filter
- Configurable input source for pulse counter
 - Rising-edge or falling-edge

8.16.1 LPTMR1 Signals

Table 59: LPTMR1 Signals

| Pin# | Assy | Pin Function | Alt# | Notes | Ball |
|-------|------|--------------|------|-------|---------|
| J2.50 | | lptmr1.ALT1 | 4 | | SOC.G17 |
| J2.56 | | lptmr1.ALT2 | 4 | | SOC.J17 |
| J3.62 | | lptmr1.ALT3 | 4 | | SOC.G18 |

8.16.2 LPTMR2 Signals

Table 60: LPTMR2 Signals

| Pin# | Assy | Pin Function | Alt# | Notes | Ball |
|-------|--------|--------------|------|---|----------|
| J1.12 | Non-EC | lptmr2.ALT1 | 3 | Runs @ 1.8V. | SOC.Y9 |
| J1.84 | | lptmr2.ALT1 | 1 | Will change level according to J1.90 NVCC_SD. | SOC.AA20 |
| J1.14 | Non-EC | lptmr2.ALT2 | 3 | Runs @ 1.8V. | SOC.AA9 |
| J2.25 | SDEX | lptmr2.ALT2 | 1 | Runs @ J1.90 VDD_SDIO2 level. | SOC.AA17 |
| J1.16 | Non-EC | lptmr2.ALT3 | 3 | Runs @ 1.8V. | SOC.Y10 |

8.17 Reference Clocks

The DART-MX91 exposes the clock outputs from the internal CCM module which can be used to clock external devices.

8.17.1 Clock Signals

Table 61: Clock Signals

| Pin# | Assy | Pin Function | Alt# | Notes | Ball |
|-------|------|--------------------|------|--|---------|
| J2.76 | | ccmsrcgpcmix.CLKO1 | 0 | Runs @ 1.8V. Has an internal 12K pull down. | SOC.AA2 |
| J3.48 | | ccmsrcgpcmix.CLKO2 | 0 | Runs @ 1.8V. | SOC.Y3 |
| J1.28 | | ccmsrcgpcmix.CLKO3 | 0 | Runs @ 1.8V. | SOC.U4 |
| J3.52 | | ccmsrcgpcmix.CLKO4 | 0 | Runs @ 1.8V. | SOC.V4 |

8.18 ADC

The DART-MX91 integrates 1 ADC. The main features are:

- It includes eight channels, four of them connected to pins in the package.
- Support the 1MS/s frequency of operation
- Multiple modes of starting conversion (Normal, Injected)
- Normal mode supports One-Shot and Scan (continuous) conversions
- Injected mode supports One-Shot conversions only
- Support TRGMUX to allow 16 trigger channels to be used by any ADC channel

8.18.1 ADC Signals

Table 62: ADC Signals

| Pin# | Assy | Pin Function | Alt# | Notes | Ball |
|-------|------|----------------|------|--------------|---------|
| J3.76 | | anamix.adc_in0 | 0 | Runs @ 1.8V. | SOC.B19 |
| J3.78 | | anamix.adc_in1 | 0 | Runs @ 1.8V. | SOC.A20 |
| J3.80 | | anamix.adc_in2 | 0 | Runs @ 1.8V. | SOC.B20 |
| J3.82 | | anamix.adc_in3 | 0 | Runs @ 1.8V. | SOC.B21 |

8.19 DAP - Debug Access Port

DAP is a standard Arm component, comprising of several components. These components are used to access the DAP from an external debugger and Access Ports to access on-chip debug system resources. The DAP supports 1149.1/Arm SW-DP interface, which means that the JTAG interface can be operate in standard 5-pin JTAG-DP interface or in 2-pin SW-DP interface. The following figure shows the connectivity between the DAP and the pads.

8.19.1 DAP Signals

Table 63: DAP Signals

| Pin# | Assy | Pin Function | Alt# | Notes | Ball |
|-------|------|------------------|------|---|---------|
| J2.26 | | dap.TCLK_SWCLK | 0 | Runs @ 1.8V. Used on DART for BT communication. If BT not required internal buffer can be disabled, and pin function released to customer usage | SOC.Y1 |
| J2.60 | | dap.TCLK_SWCLK | 5 | | SOC.V21 |
| J2.24 | | dap.TDI | 0 | Runs @ 1.8V. Used on DART for BT communication. If BT not required internal buffer can be disabled, and pin function released to customer usage | SOC.W1 |
| J2.42 | | dap.TDI | 5 | | SOC.V20 |
| J2.20 | | dap.TDO_TRACESWO | 0 | Runs @ 1.8V. Used on DART for BT communication. If BT not required internal buffer can be disabled, and pin function released to customer usage | SOC.Y2 |
| J3.64 | | dap.TDO_TRACESWO | 5 | | SOC.U21 |
| J2.22 | | dap.TMS_SWDIO | 0 | Runs @ 1.8V. Used on DART for BT communication. If BT not required internal buffer can be disabled, and pin function released to customer usage. Has an internal 10K pull down. | SOC.W2 |
| J2.54 | | dap.TMS_SWDIO | 5 | | SOC.W21 |

8.20 Power

8.20.1 Power

Table 64: Power

| Pin# | Assy | Pin Function | Alt# | Notes | Ball |
|-------|------|--------------|------|--|------------|
| J3.71 | | VBAT | | | |
| J3.73 | | VBAT | | | |
| J3.75 | | VBAT | | | |
| J3.77 | | VBAT | | | |
| J3.79 | | VBAT | | | |
| J3.81 | | VBAT | | | |
| J3.83 | | VBAT | | | |
| J3.85 | | VBAT | | | |
| J3.87 | | VBAT | | | |
| J3.89 | | VBAT | | | |
| J1.15 | | NVCC_BBSM | | | PCA9451.3 |
| J1.90 | | NVCC_SD | | Power output for SD2 pins reference. 1.8V/3.3V- set by DART PMIC. | PCA9451.55 |
| J3.66 | | USB1_VBUS | | Runs @ 5.0V. VBUS Reference Voltage input. | SOC.F12 |
| J3.26 | | USB2_VBUS | | Runs @ 5.0V. VBUS Reference Voltage input. | SOC.E14 |

8.20.2 Ground

Table 65: Digital Ground Pins

| Pin# | Assy | Pin Function | Alt# | Notes | Ball |
|-------|-------------|--------------|------|-------|------|
| J2.12 | | AGND | 0 | | |
| J1.18 | | GND | 0 | | |
| J1.21 | | GND | 0 | | |
| J1.30 | | GND | 0 | | |
| J1.33 | | GND | 0 | | |
| J1.49 | | GND | 0 | | |
| J1.64 | Non WBD/WBE | GND | 0 | | |
| J1.67 | Non WBE | GND | 0 | | |
| J1.76 | | GND | 0 | | |
| J1.85 | | GND | 0 | | |
| J2.18 | | GND | 0 | | |
| J2.23 | | GND | 0 | | |
| J2.47 | | GND | 0 | | |
| J2.53 | | GND | 0 | | |
| J2.75 | | GND | 0 | | |
| J2.84 | | GND | 0 | | |
| J3.9 | | GND | 0 | | |
| J3.10 | | GND | 0 | | |
| J3.15 | | GND | 0 | | |
| J3.21 | | GND | 0 | | |
| J3.24 | | GND | 0 | | |
| J3.27 | | GND | 0 | | |
| J3.33 | | GND | 0 | | |
| J3.34 | | GND | 0 | | |
| J3.39 | | GND | 0 | | |
| J3.45 | | GND | 0 | | |
| J3.51 | | GND | 0 | | |
| J3.57 | | GND | 0 | | |
| J3.63 | | GND | 0 | | |
| J3.68 | | GND | 0 | | |
| J3.74 | | GND | 0 | | |

8.21 General System Control

8.21.1 General System Control Signals

Table 66: General System Control Signals

| Pin# | Assy | Pin Function | Alt# | Notes | Ball |
|-------|------|----------------|------|---|------------|
| J1.1 | | PMIC_NINT | 0 | Runs @ 1.8V. Has an internal 100K pull up. | PCA9451.13 |
| J3.88 | | PMIC_ON_REQ | 0 | Runs @ 1.8V. | SOC.A17 |
| J1.22 | | PMIC_RST_B | 0 | Runs @ 1.8V. PMIC reset input. Pull low to hold DART internal regulators OFF. Pulse low for cold reboot. Has an internal 100K pull up. | PCA9451.8 |
| J1.26 | | PMIC_STBY_REQ | 0 | Runs @ 1.8V. | SOC.B18 |
| J1.20 | | ONOFF | 0 | Runs @ 1.8V. | SOC.A19 |
| J1.24 | | POR_B | 0 | Runs @ 1.8V. Pull low to hold SOC in reset state. Pulse low for warm reboot. Has an internal 100K pull up. | PCA9451.9 |
| J3.70 | | TAMPER0 | 0 | Runs @ 1.8V. | SOC.B16 |
| J3.72 | | TAMPER1 | 0 | Runs @ 1.8V. | SOC.F14 |
| J2.28 | | wdog1.WDOG_ANY | 0 | | SOC.J18 |
| J3.84 | | CLKIN1 | 0 | Runs @ 1.8V. Has an internal 100K pull down. | SOC.B17 |
| J3.86 | | CLKIN2 | 0 | Runs @ 1.8V. Has an internal 100K pull down. | SOC.A18 |

8.21.2 Boot configuration

The DART-MX91 can be boot from the following sources:

- Internal source - eMMC Flash memory (J2.90 set to Low)
- External source
 - SD Card (J2.90 set to High and SD Card plugged in)
 - USB UUU Serial Downloader (J2.90 set to High and SD Card is not plugged in)

To select other boot modes the following pins can be used.

The BOOT_MODE[1] is not exposed and always pulled up on the SOM.

Table 67: BOOT_MODE Signals

| Pin# | Assy | Pin Function | Alt# | Notes | Ball |
|-------|--------|-----------------|------|---|---------|
| J2.10 | | BOOT_MODE[2] | | Has an internal SOC PD. Do not drive until after POR_B rise + 30ms | SOC.G21 |
| J2.14 | Non-AC | BOOT_MODE[3] | | Has an internal SOC PD. Do not drive until after POR_B rise + 30ms. | SOC.H21 |
| J2.90 | | BOOT_MODE[0] | | Used as console debug on Variscite release. Do not drive until after POR_B rise + 30ms Internal buffer connected to J2.78 drives this pin, latched with POR_B rise. | SOC.E21 |
| J2.78 | | enet2.RGMII_TD2 | | Runs @ 1.8V. Internal buffer connected to this pin drives BOOT_MODE0 (J2.90). Latched with POR_B rise. | SOC.V8 |

Table 68: Available boot modes

| BOOT_MODE [3:0] | BOOT CORE | BOOT DEVICE | Notes |
|-----------------|------------|--|---|
| 0000 | Cortex-A55 | From internal fuses | |
| 0001 | Cortex-A55 | USB1/2 Serial Downloader | Can be achieved by J2.90 set to High and SD Card is not plugged in |
| 0010 | Cortex-A55 | USDHC1 8-bit eMMC 5.1 | Variscite EVK and SW support this mode |
| 0011 | Cortex-A55 | USDHC2 4-bit SD3.0 | Variscite EVK and SW support this mode |
| 0100 | Cortex-A55 | FlexSPI Serial NOR. Supports SFDP (JESD-216) parameters | |
| 0101 | Cortex-A55 | FlexSPI Serial NAND 2K page | |
| 0110 | Cortex-A55 | Infinite Loop | |
| 0111 | Cortex-A55 | Test Mode | |

9. Assembly Options

To make the solution as Flexible as possible the following assembly options were added. The assembly options help customers to order the SOM variant that includes only the needed interfaces with a lower cost.

9.1 Ethernet PHY

The SOM can be ordered without Ethernet PHY chip assembled; it allows reducing the overall cost of the product in case the Ethernet Interfaces are not used.

when not assembled, SoC balls are exported to SOM connector instead of Ethernet interface pins.

9.2 Analog Audio Codec

The SOM can be ordered without Audio Codec chip assembled. This allows reducing the overall cost of the product in case the Analog Audio Codec is not used.

when not assembled, SoC balls are exported to SOM connector instead of Analog codec interface pins.

9.3 Single/Dual band Wi-Fi and BT/BLE combo

The SOM can be ordered without the Single or Dual band Wi-Fi and BT/BLE combo chip assembled, it allows reducing the overall cost of the product in case the Wi-Fi and BT/BLE is not used.

9.4 LPDDR4

The SOM can be ordered with different RAM size capacities, it allows reducing the overall cost of the product in case lower RAM size is sufficient.

9.5 eMMC

The SOM can be ordered with different eMMC size capacities, it allows reducing the overall cost of the product in case lower eMMC size is sufficient.

10. Electrical Specifications

10.1 Absolute Maximum Ratings

Table 69: Absolute Maximum Ratings

| Pin # | Min | Max | Units | Comments |
|--|------|----------|-------|--------------------------------|
| VBAT | -0.3 | 6.0 | V | |
| USB_OTG1_VBUS, USB_OTG2_VBUS | -0.3 | 5.25 | V | |
| Vin/Vout input/output voltage range (GPIO Type Pins) | -0.3 | OVDD+0.3 | | OVDD is the I/O supply voltage |
| ESD damage immunity Human Body Model (HBM) | -- | TBD | | |
| ESD damage immunity Charge Device Model (CDM) | -- | TBD | | |

10.2 Operating Conditions

Table 70: Operating Ranges

| Pin # | Min | Typ | Max | Unit |
|------------------------------|------|-----|------|------|
| VCC_SOM | 3.5 | 3.7 | 5.5 | V |
| USB_OTG1_VBUS/ USB_OTG2_VBUS | 4.75 | 5 | 5.25 | V |

10.3 Peripheral Voltage Levels

Most of the peripheral interface lines used as inputs or outputs to the DART-MX91 use 3.3V LVCMOS levels, except the following interfaces: SD2, ENET_QOS, and ENET.

USB: The interface follows a USB standard.

uSDHC2: (SDIO lines) interface IOs will change voltage between 3.3V and 1.8V depending on the SD card capabilities.

With other alternative functions, the user can determine whether the voltage of the uSDHC2 IOs bank will be 1.8V or 3.3V using gpio3.IO[19].

ENET_QOS: interface available in case SOM is ordered **without "EC"** configuration. IO voltage is 1/8V.

ENET1: IO voltage is 1/8V.

10.4 Power Consumption

Table 71: DART-MX91 Power Consumption

| Mode | Voltage | Current | Power | Conditions |
|----------------------------------|---------|---------|--------|---|
| Run | 3.7V | TBD | 2.553W | Linux up, Wi-Fi connected and lperf is running 802.11ax 5GHz |
| Run | 3.7V | TBD | 2.183W | Linux up, Wi-Fi connected and lperf is running 802.11n 2.4GHz |
| Run | 3.7V | TBD | 1.868W | Linux up. Ethernet0 running lperf |
| Run | 3.7V | TBD | 1.406W | Linux up. Ethernet0, Ethernet1, Wi-Fi module up |
| Standby | 3.7V | TBD | 0.222W | Memory retention mode |
| Off (RTC) | 3.7V | TBD | 7.03mW | All power rails are Off, only Internal SoC RTC is powered |
| Minimum Recommended Power Supply | 3.7V | 2A | 7.4W | See note below |

Note: The Wi-Fi module needs a power source that can provide a peak current of ~1000mA@1.8V during DPD calibration when the firmware is downloaded, even though its max continuous supply current during transmission/reception is less.

Module calibration occurs:

- When the Module is initially powered up.
- The module is reset.
- When the radio is initialized.
- Every two minutes after the radio is initialized.

NOTE

Setup:

HW: DART-MX91D_V2_1700C_2048R_16G_AC_EC_ET_REV1.0A

SW:

DISCLAIMER:

The power consumption measurements apply only to limited operation scenarios. Actual power consumption may vary depending on the interfacing peripherals and user application modes; users must conduct testing according to their specific operation scenarios.

An appropriate thermal solution should be applied depending on the specific use cases and end-product system design.

11. Environmental Specifications

Table 72: Environmental Specifications

| Parameter | Min | Max |
|--|---------------|------|
| Commercial Operating Temperature Range | 0°C | 70°C |
| Extended Operating Temperature Range | -25°C | 85°C |
| Industrial Operating Temperature Range | -40°C | 85°C |
| Storage Temperature Range | -40°C | 85°C |
| Relative humidity (operation) | 10% | 90% |
| Relative humidity (storage) | 05% | 95% |
| MTBF Prediction Method Model: Telcordia Technologies Special Report SR-332, Issue 4 50°C, GB | > 5000 Khrs * | |

Note: Industrial Temperature is only based on the operating temperature grade of the SoM components. Customer should consider specific thermal design for the final product based upon the specific environmental and operational conditions.

*Preliminary information

12. Mechanical

12.1 Carrier Board Mounting

The SOM has four mounting holes, which are plated holes connected to GND, for mounting it to the carrier board.

Note: The size and footprint of SOM 90-pin connectors Hirose P/N: DF40C-90DP-0.4V(51) are different from mating carrier board 90-pin connectors (see section 7.1).

To ensure the correct positioning of the carrier board connectors and holes, please refer to VAR-DT8MCustomBoard DXF is available here (under the documentation tab):

<http://www.variscite.com/products/single-board-computers/var-dt8mcustomboard>

It is recommended NOT to place any components under the SOM.

12.2 Standoffs

Customers requiring a mechanical solution for mounting in harsh vibration environments can use the following standoff:

Manufacturer: **MAC8**

PN: **TH-1.6-1.5-M2**

Link: <http://www.mac8japan.com/English%20Catalog/TH1.6%20Series-2.pdf>

12.3 SOM Dimensions

The connectors' size, mounting holes, and relative locations can be found in the figures below. All dimensions are given in millimeter and [mils] units.

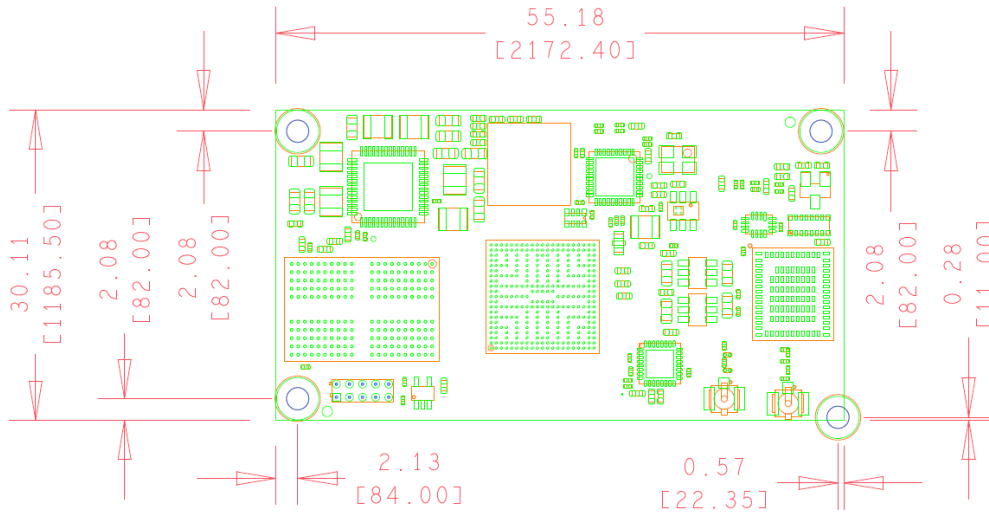


Figure 5: DART-MX91 Component Side Mechanics (Top view)

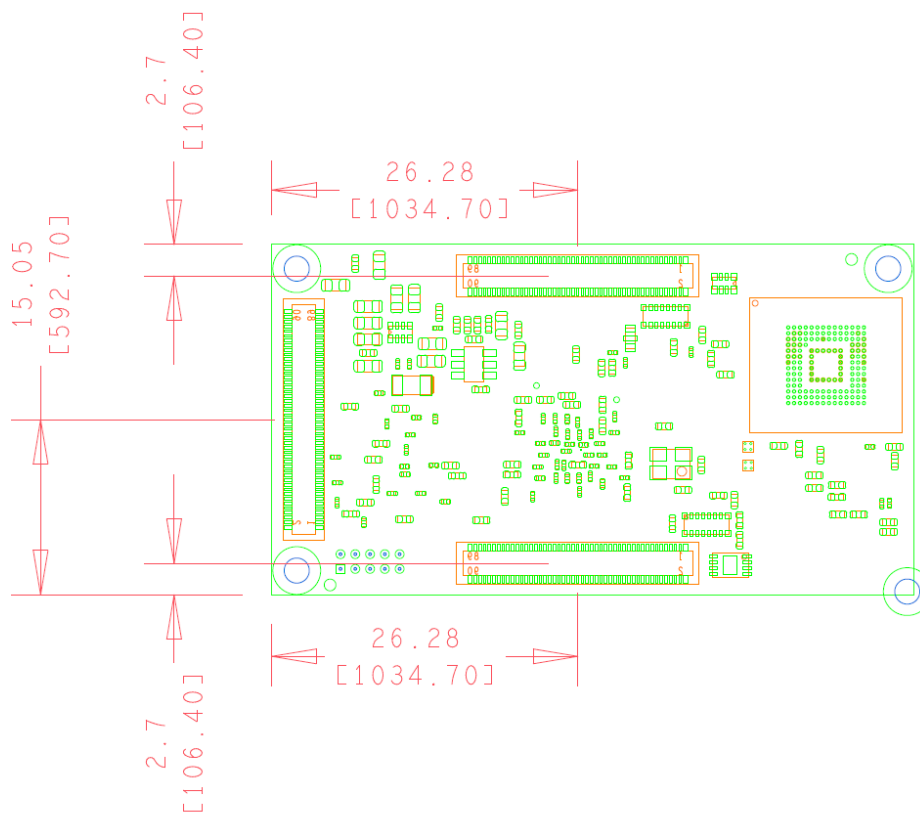


Figure 6: DART-MX91 Print Side Mechanics (Top view)

13. Legal Notice

Variscite Ltd. (“Variscite”) products and services are sold subject to Variscite terms and conditions of sale, delivery and payment supplied at the time of order acknowledgement.

Variscite warrants performance of its products to the specifications in effect at the date of shipment. Variscite reserves the right to make changes to its products and specifications or to discontinue any product or service without notice. Customers should therefore obtain the latest version of relevant product information from Variscite to verify that their reference is current.

Testing and other quality control techniques are utilized to the extent that Variscite deems necessary to support its warranty.

Specific testing of all parameters of each device is not necessarily performed unless required by law or regulation.

In order to minimize risks associated with customer applications, the customer must use adequate design and operating safeguards to minimize inherent or procedural hazards. Variscite is not liable for applications assistance or customer product design. The customer is solely responsible for its selection and use of Variscite products. Variscite is not liable for such selection or use or for use of any circuitry other than circuitry entirely embodied in a Variscite product.

Variscite products are not intended for use in life support systems, appliances, nuclear systems or systems where malfunction can reasonably be expected to result in personal injury, death or severe property or environmental damage. Any use of products by the customer for such purposes is at the customer’s own risk.

Variscite does not grant any license (express or implied) under any patent right, copyright, mask work right or other intellectual property right of Variscite covering or relating to any combination, machine, or process in which its products or services might be or are used. Any provision or publication of any third party’s products or services does not constitute Variscite’s approval, license, warranty or endorsement thereof. Any third-party trademarks contained in this document belong to the respective third-party owner.

Reproduction of information from Variscite datasheets is permissible only if reproduction is without alteration and is accompanied by all associated copyright, proprietary and other notices (including this notice) and conditions. Variscite is not liable for any un-authorized alteration of such information or for any reliance placed thereon.

Any representations made, warranties given, and/or liabilities accepted by any person which differ from those contained in this datasheet or in Variscite’s standard terms and conditions of sale, delivery and payment are made, given and/or accepted at that person’s own risk. Variscite is not liable for any such representations, warranties or liabilities or for any reliance placed thereon by any person.

14. Warranty Terms

Variscite guarantees hardware products against defects in workmanship and material for a period of one (1) year from the date of shipment. Your sole remedy and Variscite's sole liability shall be for Variscite, at its sole discretion, to either repair or replace the defective hardware product at no charge or to refund the purchase price. Shipment costs in both directions are the responsibility of the customer. This warranty is void if the hardware product has been altered or damaged by accident, misuse or abuse.

Disclaimer of Warranty

THIS WARRANTY IS MADE IN LIEU OF ANY OTHER WARRANTY, WHETHER EXPRESSED, OR IMPLIED, OF MERCHANTABILITY, FITNESS FOR A SPECIFIC PURPOSE, NON-INFRINGEMENT OR THEIR EQUIVALENTS UNDER THE LAWS OF ANY JURISDICTION, EXCEPT THE WARRANTY EXPRESSLY STATED HEREIN. THE REMEDIES SET FORTH HEREIN SHALL BE THE SOLE AND EXCLUSIVE REMEDIES OF ANY PURCHASER WITH RESPECT TO ANY DEFECTIVE PRODUCT.

Limitation on Liability

UNDER NO CIRCUMSTANCES SHALL VARISCITE BE LIABLE FOR ANY LOSS, DAMAGE OR EXPENSE SUFFERED OR INCURRED WITH RESPECT TO ANY DEFECTIVE PRODUCT. IN NO EVENT SHALL VARISCITE BE LIABLE FOR ANY INCIDENTAL OR CONSEQUENTIAL DAMAGES THAT YOU MAY SUFFER DIRECTLY OR INDIRECTLY FROM USE OF ANY PRODUCT. BY ORDERING THE SOM, THE CUSTOMER APPROVES THAT THE VARISCITE SOM, HARDWARE AND SOFTWARE, WAS THOROUGHLY TESTED AND HAS MET THE CUSTOMER'S REQUIREMENTS AND SPECIFICATIONS.

15. Contact Information

Headquarters:

Variscite Ltd.

9, Hamelacha Street
Lod
P.O.B 1121
Airport City, 70100
ISRAEL

Tel: +972 (9) 9562910

Fax: +972 (9) 9589477

Sales: sales@variscite.com

Technical Support: support@variscite.com

Corporate Website: www.variscite.com

