

Deploying and executing a simple .NET Application on VAR- 3xxSBC platform

Application note

Target Setup:

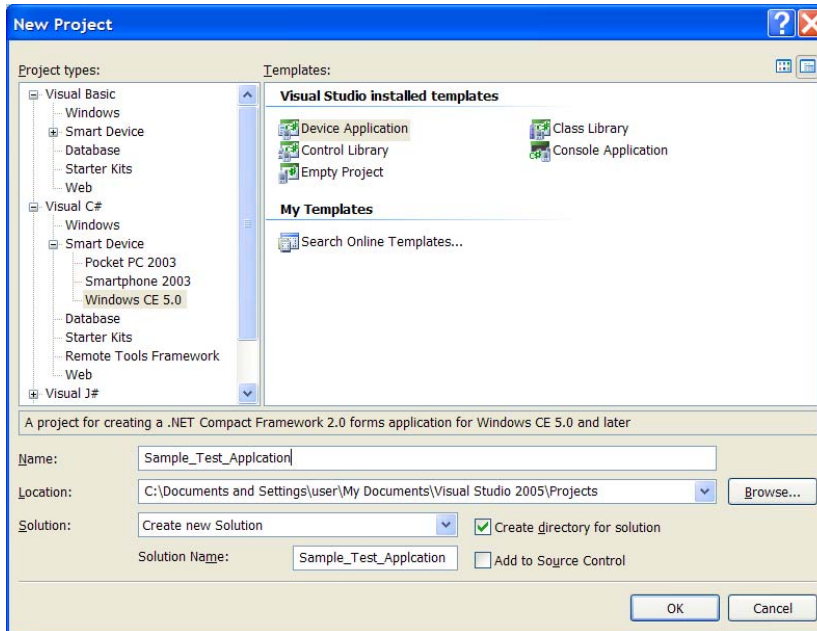
- Connect the power of the Baseboard.
- Wait till CE desktop appears on the LCD
- The target arrives with a “USB Cable connection” already registered. Verify that by:
Start→Settings→Network and dialup connection. An icon named “My connection” should reside there.
 - In case “USB Cable connection” is not there, choose Make new connection→Direct connection→Next→USB Cable→Finish
- The target is now ready to connect to the PC.

PC Setup:

- Make sure your PC has Microsoft ActiveSync 4.5 installed and active
- Connect the USB ActiveSync cable between the target device and your PC. You should see a connection indication on both the target device and the PC
- Install the SDK (Software Development Kit) file provided by Variscite.

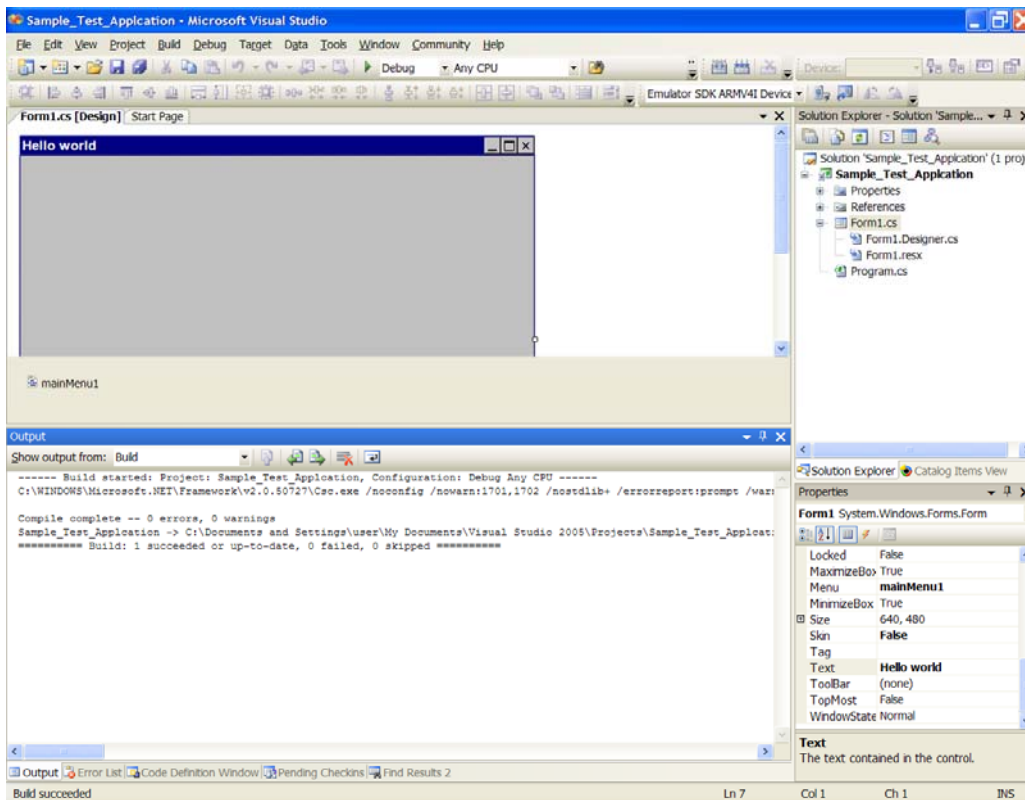
Note: This is optional for Dot NET applications but mandatory for Native programming languages like MFC C++ Etc

- Open Visual Studio 2005
- Open a new project: File → New → Project
- Choose project type: Visual C# → Smart Devices → Windows CE 5.0 (Applies for both CE5.0 and CE6.0 based applications)
- Select a name for your project: Type the name of the project and hit OK



A new plain form is created.

- Go to Form properties and change the text property to “Hello world”.
- Build your simple project: Build → Build solution



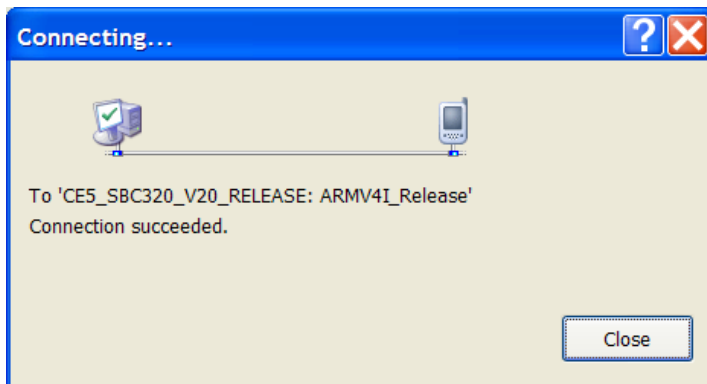
Your sample “Hello World” application is ready for deployment to the target.

Debugging the application on the target device:

- On Visual Studio 2005, select Tools→Connect to device
- Select the installed SDK from the list

Note: This is optional for Dot NET applications but mandatory for Native programming languages like MFC C++ Etc. For Dot NET application, you can connect to genericl CE device (“Windows CE 5.0 Device”)

- Hit “Connect”
- After a few seconds, your target device and PC are connected



- Hit “Close”
- Deploy the sample Application to the target device: Debug→Start Debugging (Or F5, or the green arrow at the toolbar)

The sample application should be up and running on the target, and you should be able to use the Visual Studio 2005 debugging capabilities.

Executing the application on the target device:

- Use the ActiveSync running on your PC to copy the executable of your sample application to the target storage. The default location is:
C:\Documents and Settings\user\My Documents\Visual Studio 2005\Projects\Sample_Test_Application\Sample_Test_Application\bin\Debug
- In the target, browse to the directory containing the sample application executable and run it.